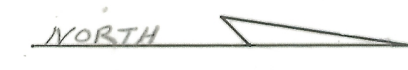
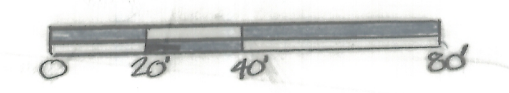
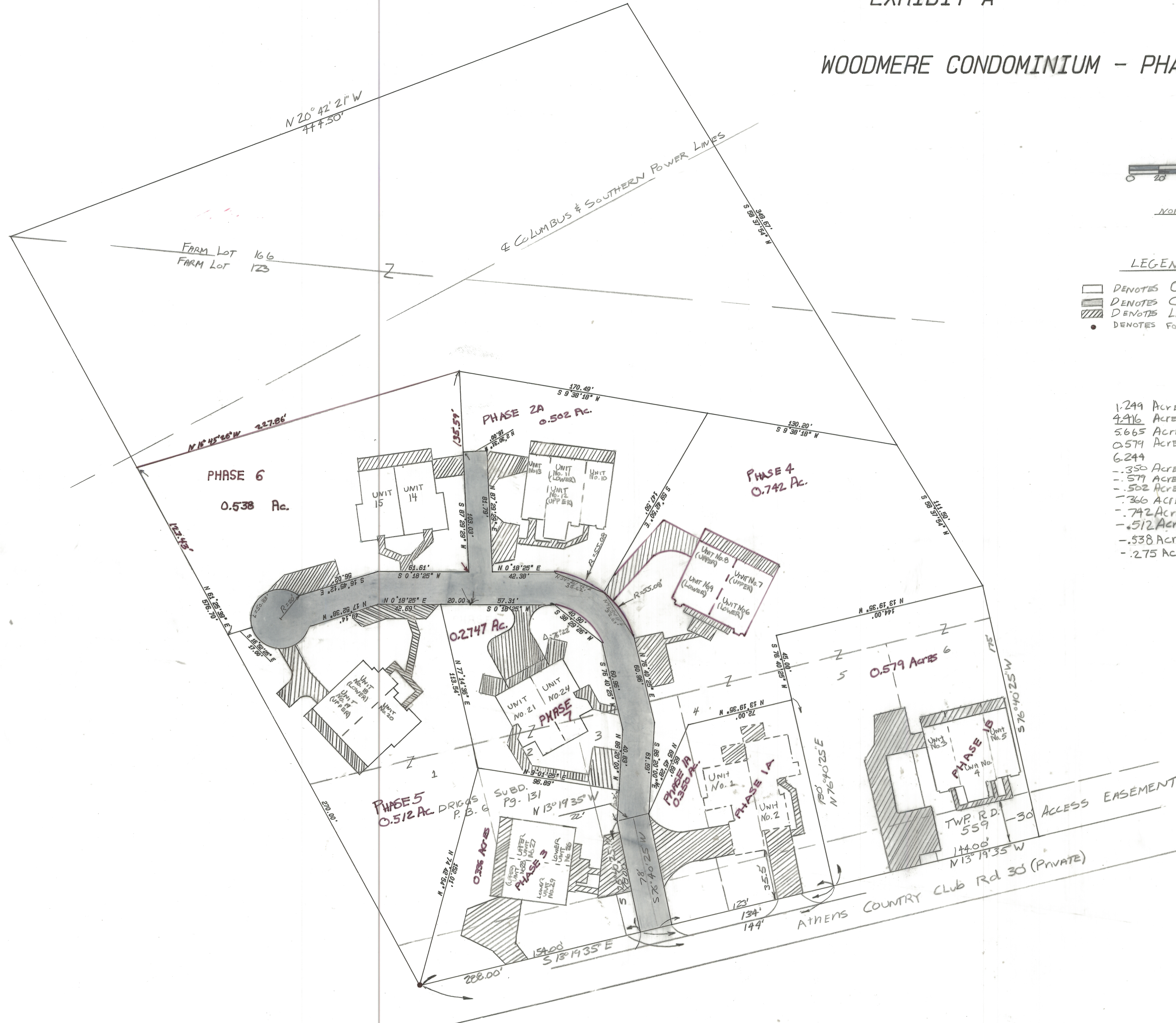


EXHIBIT A

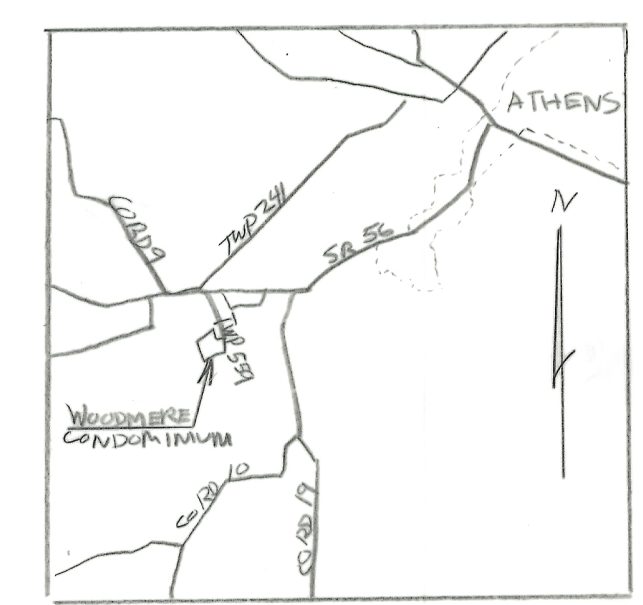
WOODMERE CONDOMINIUM - PHASE 7



LEGEND-PHASE

- DENOTES COMMON AREA
- ▨ DENOTES COMMON AREA DRIVE
- ▩ DENOTES LIMITED COMMON AREA
- DENOTES FOUND IRON PIN

1,299 ACRES IN FL. 166  
 4,916 ACRES IN FL. 123 (INCLUDES LOTS 1-4)  
 5,665 ACRES TOTAL  
 0,579 ACRES IN FL. 123 (INCLUDES LOTS 5 & 6)  
 6,244  
 - .350 ACRES - PHASE 1A  
 - .579 ACRES - PHASE 1B  
 - .502 ACRES - PHASE 2A  
 - .366 ACRES - PHASE 3  
 - .742 ACRES - PHASE 4  
 - .512 ACRES - PHASE 5  
 - .538 ACRES - PHASE 6  
 - .275 ACRES - PHASE 7



LOCATION MAP

I HEREBY CERTIFY THAT THIS DRAWING ACCURATELY SHOWS THE BUILDING AND OTHER IMPROVEMENTS AS LOCATED AND AS CONSTRUCTED OR TO BE CONSTRUCTED AT WOODMERE CONDOMINIUM (PHASE 6) AND THAT THERE ARE NO ENCROACHMENTS ON ANY ADJUTING PREMISES.

*David J. Senger Jr.*

DATE 11/23/92

1664

RECORDED 13-16 1993  
 AT 3:29 O'CLOCK P.M.

See 8th Amendment OR 140 Pg. 464 See Corrected in OR 141 Pg. 576

RECORD OF PLATS  
 JULIA MICHAELSLATT, RECORDER  
 ATHENS COUNTY, OHIO

SURVEY OF 0.2747 ACRES 1664 4320 ENV 448 B

SITUATED IN FARM LOT 123, SEC. 26  
 ATHENS TOWNSHIP, ATHENS COUNTY, OHIO

PREPARED BY

ENVELOPE: 448B  
 WOODMERE CONDOMINIUM PHASE VII  
 SECTION 26  
 ATHENS TWP

SOUTHEASTERN LAND SURVEYS  
 FOR RON STRICKMAKER