

**Description of a 0.346-acre tract (Existing Cemetery)**

Situated in Fraction 23, Section 22, T.11, R.15, Waterloo Township, Athens County, Ohio and being an existing cemetery as defined by fence and being more particularly described as follows:

Beginning at a fence corner at the Northeast corner of an existing cemetery, said post bears South 1070 feet and west, 2600 feet more or less from the Northeast corner of said Fraction 23;

Thence, along an existing cemetery fence, South 02 degrees 35 minutes 11 seconds West, 102.60 feet to a fence corner;  
thence, continuing along said fence, South 87 Degrees 13 minutes 28 seconds West, 121.77 feet to a point in Grass Run Road, passing an iron pin set by a fence corner at 87.77 feet;  
thence, along said road, North 16 degrees 01 minutes 45 seconds West, 115.47 feet to a point;  
thence, leaving said road, and along an existing cemetery fence, South 89 Degrees 30 minutes East, 162.00 feet (passing an iron pin set by a fence corner at 30.00 feet) to the point of beginning and containing 0.346 acres.

Subject to all easements and rights of way of record.

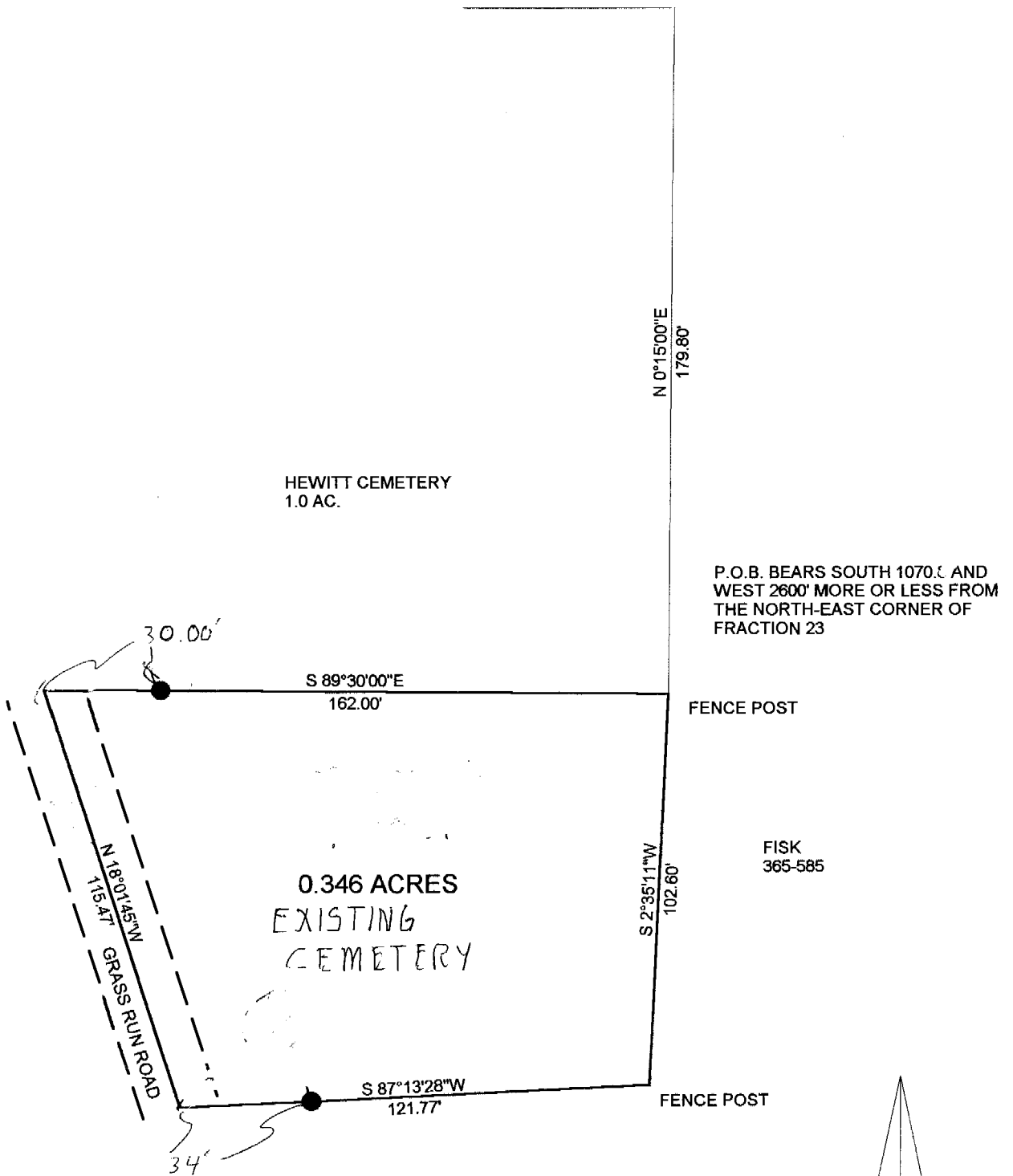
The above description is based on a field survey by John M. Branner P.S. 6805 and completed in September 2000.

Division checked for  
Mathematical Accuracy  
ATHENS COUNTY  
ENGINEER'S OFFICE  
*S. Blausse*  
9-29-00



000012

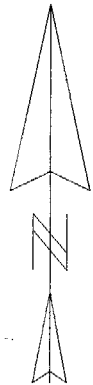
Lot # 22



SURVEY OF A 0.346 ACRE TRACT IN  
 FRACTION 23, SECTION 22, T.11, R.15,  
 WATERLOO TOWNSHIP  
 ATHENS COUNTY, OHIO  
 SURVEYED SEPT. 2000

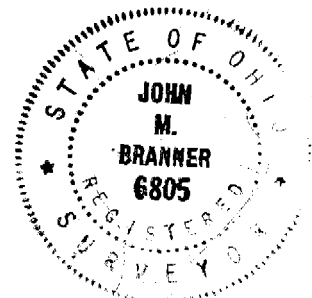
BY: *John M. Branner*  
 JOHN M. BRANNER P.S. 6805  
 17500 N. PEACH RIDGE RD.  
 ATHENS OHIO 45701

Location checked for  
 International Accuracy  
 ATHENS COUNTY  
 ENGINEERS OFFICE  
*S. Blause*  
 9-29-00



SCALE 1 INCH = 40 FEET

● = IRON PIN SET  
 ASSUMED BEARINGS



000014