

HAROLD D. ("DALE") WHALEY

REGISTERED SURVEYOR NO. 4986

ALBANY, OHIO

Lots, Farms, Subdivisions and Construction Staking

173.29 Acres

Situated in the North half of Sec. 3, T. 11, R. 15, Waterloo Twp., Athens County, Ohio and being more particularly described as follows:

Beginning at a point in the centerline of the B. & O. R. R. and the County Road No. 9, said point being N. 86° 04' 20" W., 495.00 feet and S. 5° 20' 40" W., 72.64 feet from the N. E. corner of Sec. No. 3;

Thence along the West line of a 28.65 acre tract, S. 5° 20' 40" W., 2,447.16 feet to an iron pin on the half Section line;

Thence along said half section line, N. 86° 04' 20" W., 4,877.86 feet to an iron pin on the WEST line of Sec. No. 3;

Thence along the West line of Sec. 3, N. 5° 26' 20" E., 1,545.88 feet to a point in the centerline of the B. & O. R. R. track;

Thence along the centerline of the B. & O. R. R., S. 73° 37' 30" E., 15.25 ft. to a point;

Thence S. 71° 11' 30" E., 198.10 feet to a point;

Thence S. 67° 09' E., 202.40 feet to a point;

Thence S. 63° 36' E., 199.60 feet to a point;

Thence S. 62° 26' E., 78.20 feet to a point;

Thence S. 63° 16' E., 179.09 feet to a point;

Thence S. 64° 54' E., 147.00 feet to a point;

Thence S. 68° 14' E., 198.57 feet to a point;

Thence S. 72° 19' E., 207.16 feet to a point;

Thence S. 76° 28' E., 206.63 feet to a point;

Thence S. 80° 37' 30" E., 209.37 feet to a point;

Thence S. 84° 44' E., 201.06 feet to a point;

(continued)

Waterloo Twp. Sec. #3

21

HAROLD D. ("DALE") WHALEY

REGISTERED SURVEYOR NO. 4986

ALBANY, OHIO

Lots, Farms, Subdivisions and Construction Staking

173.29 Acres continued --

Thence S. 88° 51' E., 208.24 feet to a point;

Thence N. 87° 02' E., 215.15 feet to a point;

Thence N. 82° 12' E., 198.63 feet to a point;

Thence N. 78° 22' E., 185.42 feet to a point;

Thence N. 74° 29' 30" E., 203.47 feet to a point;

Thence N. 70° 28' 30" E., 203.46 feet to a point;

Thence N. 67° 06' 30" E., 269.78 feet to a point;

Thence N. 66° 31' 30" E., 332.19 feet to a point;

Thence leaving the Railroad, N. 52° 34' 20" W. (passing an iron pin at 92.86 feet) for a total distance of 364.43 feet to an iron pin;

Thence N. 10° 05' 20" E., 469.46 feet to an iron pin;

Thence N. 82° 32' 05" E., 708.49 feet to a R. R. Spike in the centerline of C. R. No. 9;

Thence along the centerline of the public road, S. 69° 12' 30" E., 45.14 feet to a R. R. Spike;

Thence N. 83° 30' E., 351.63 feet to a spike;

Thence S. 78° 32' E., 232.40 feet to a spike;

Thence N. 74° 17' 30" E., 144.37 feet to a spike;

Thence S. 76° 28' 30" E., 33.35 feet to the point of beginning, containing 173.29 acres, of which 157.07 acres lies South of the Railroad and 16.22 acres lie North of Railroad, and of which 8.80 acres is in Railroad Right of Way, leaving a total of 164.49 acres.

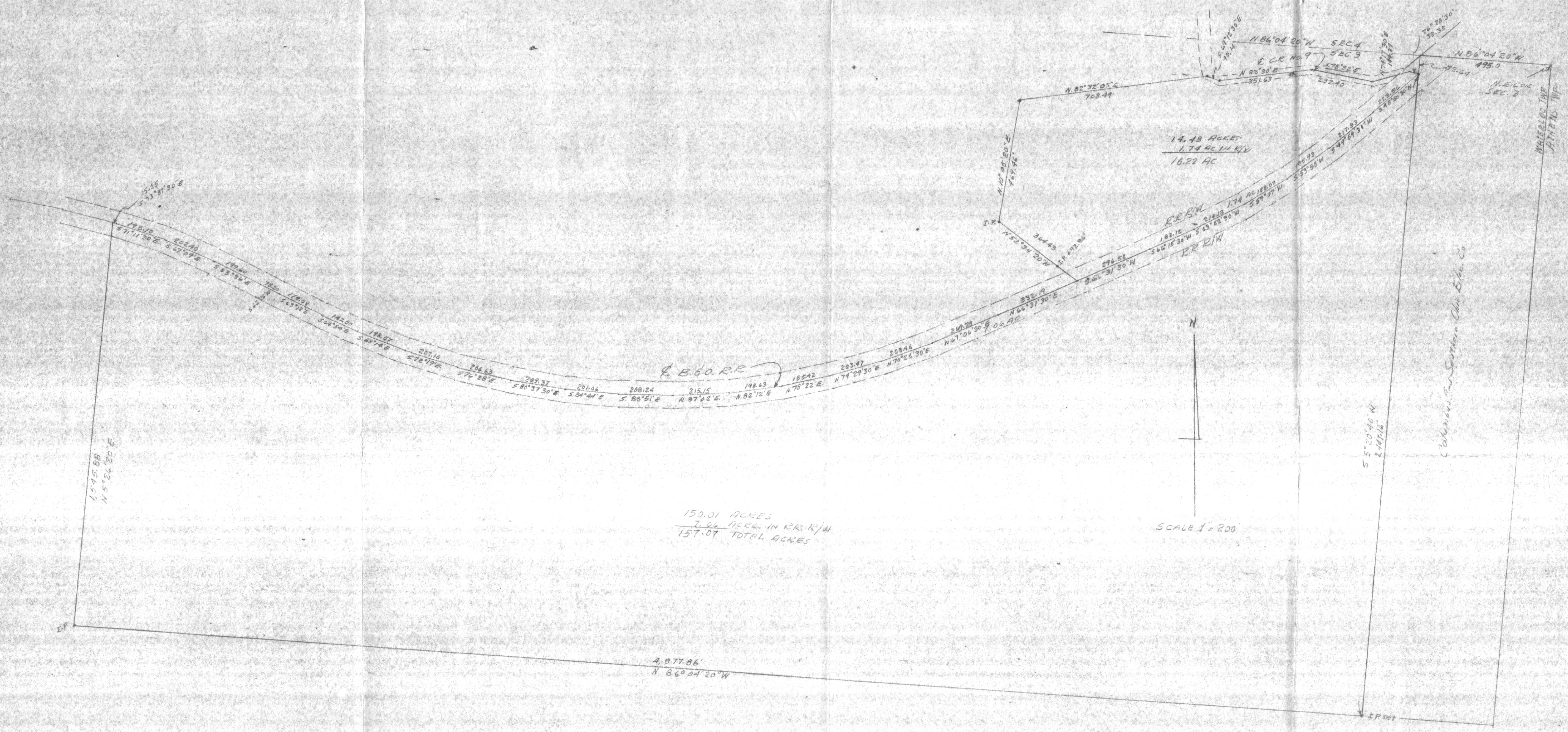
Surveyed Oct. 1971 by HAROLD D. WHALEY

Harold D. Whaley
Reg. Surveyor No. 4986

Description checked for
Mathematical Accuracy
ATHENS COUNTY
ENGINEER'S OFFICE

BY: *W. M. Watkins*

DATE: *9/7/78*



SURVEY OF A 14.48 AC. TRACT & A 150.01 AC. TRACT IN SEC. 3,
T. 14. N. R. 15. W. WATERLOO TOWNSHIP, ATHENS COUNTY, OHIO
FOR BILL BISHOP

SURVEYED OCT. 1971 BY
HAROLD D. WHARLEY
Harold D. Wharley
REG. SURV. NO. 1986