

DESCRIPTION OF A 45.423 ACRE TRACT

Situated in Section 4, T.11, R.15, Waterloo Township, Athens County, Ohio and being more particularly described as follows:

Beginning at a stone found at the South-east corner of the North-east Quarter of Section 4,
thence North 85 degrees 02 minutes 54 seconds West, a distance of 685.71 feet to a stone found ;
thence North 85 degrees 42 minutes 25 seconds West, a distance of 982.32 feet to a point in County road 9, passing an iron pin found at 952.32 feet;
thence, along said road, North 24 degrees 15 minutes 23 seconds West, a distance of 91.79 feet;
thence North 14 degrees 47 minutes 45 seconds West, a distance of 103.86 feet;
thence North 8 degrees 49 minutes 53 seconds East, a distance of 104.14 feet;
thence North 27 degrees 31 minutes 57 seconds East, a distance of 116.16 feet;
thence North 33 degrees 25 minutes 27 seconds East, a distance of 111.83 feet;
thence North 34 degrees 52 minutes 32 seconds East, a distance of 178.54 feet;
thence North 37 degrees 00 minutes 41 seconds East, a distance of 373.24 feet;
thence North 33 degrees 52 minutes 58 seconds East, a distance of 407.05 feet;
thence, leaving said road South 84 degrees 59 minutes 05 seconds East, a distance of 1163.43 feet to a stone found on the East-line of Waterloo Township, passing an iron pin set at 15.00 feet;
thence
South 5 degrees 09 minutes 20 seconds West, a distance of 1302.06 feet to the POINT OF BEGINNING; said described tract containing 45.423 acres.

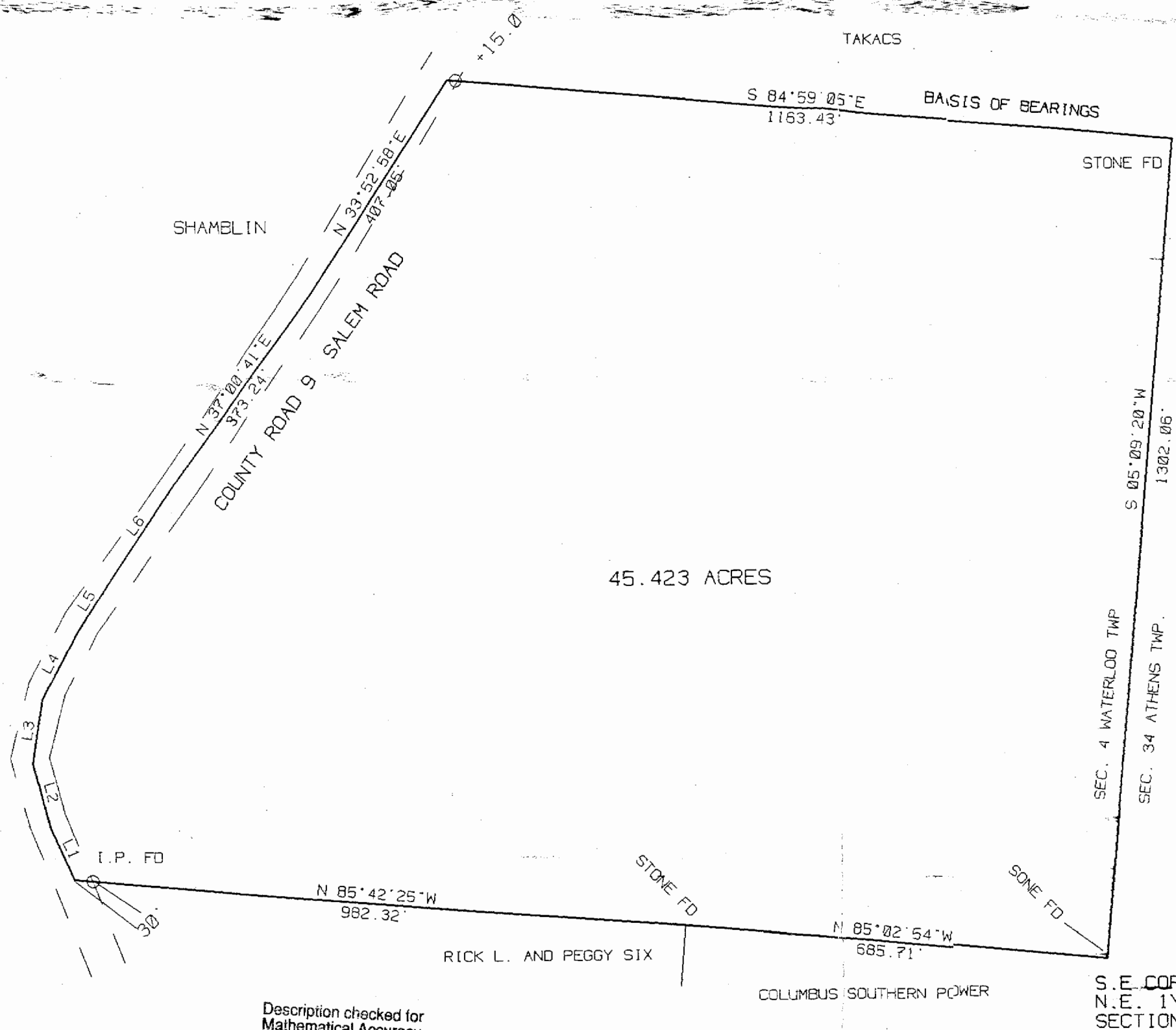
Subject to all easements and rights of way of record.

The above description is based on a field survey completed September 1997 by John M. Branner P.S. 6805

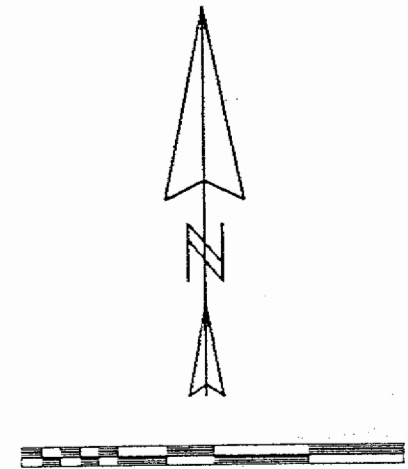
Description checked for
Mathematical Accuracy
ATHENS COUNTY
ENGINEER'S OFFICE
BY: S. Blausen
DATE: 9-12-97

85

WAT # 4



45.423 ACRES



SCALE 1 INCH = 200 FEET
 ● = IRON PIN FOUND
 ○ = IRON PIN SET

SURVEY OF A 45.423 ACRE TRACT
 IN SECTION 4, T.11, R.15,
 WATERLOO TOWNSHIP, ATHENS CO., O.
 FOR DON SHAMBLIN

SURVEYED SEPTEMBER 1997

JOHN M. BRANNER P.S. 6805
 12500 N. PEACH ERIDGE ROAD
 ATHENS, OHIO 592-5778

LINE	BEARING	DISTANCE
L 1	N 24°15'22"W	91.79'
L 2	N 14°47'45"W	103.86'
L 3	N 08°49'53"E	104.14'
L 4	N 27°31'57"E	116.16'
L 5	N 33°25'26"E	111.83'
L 6	N 34°52'32"E	178.54'

Description checked for
 Mathematical Accuracy
 ATHENS COUNTY
 ENGINEER'S OFFICE
 BY: L. Blawie
 DATE: 9-12-97

87

88