

OCT 23 2015

Jill Thompson
Athens County Auditor

Description Checked for
Mathematical Accuracy
Athens County
ENGINEER'S OFFICE
BY: Prasad Williams
DATE: 10/21/15

DESCRIPTION OF A 18.125 ACRE TRACT

Situated in Section 19, T.11, R.15, Waterloo Township, Athens County, Ohio and being a part of a tract of land as described in Vol.175, Page 787 Official Records and being more particularly described as follows:

Commencing at a stone found, said stone bears South 89 degrees 35 minutes 32 seconds East, 125 feet from a stone found at the North-west corner of Section 19;

Thence, along the North-line of Section 19,

S 85° 54' 25" E, 1297.41 feet to a stone found;

Thence, along the west-line of Preston (353-979 O.R.)

S 4° 07' 03" W, 761.01 feet to the point of beginning for the tract of land herein described:

Thence, along the west-line of Preston (353-979 O.R.)

S 4° 07' 03" W, 1470.26 feet to a point in State Route 681, passing an iron pin set at 1399.16 feet;

Thence, along said road:

N 72° 27' 27" W, 113.34 feet;

N 62° 18' 41" W, 46.39 feet;

N 56° 29' 24" W, 46.35 feet;

N 51° 44' 34" W, 49.59 feet;

N 47° 15' 03" W, 56.12 feet;

N 43° 37' 31" W, 72.52 feet;

N 39° 23' 43" W, 151.31 feet;

N 36° 52' 33" W, 254.45 feet;

N 42° 12' 26" W, 55.23 feet;

N 45° 48' 23" W, 133.52 feet;

N 47° 09' 54" W, 167.64 feet;

N 36° 44' 42" W, 63.18 feet;

N 22° 40' 16" W, 149.72 feet;

Thence, leaving said road and along the line of Loftis (508-499 O.R.)

S 74° 12' 41" E, 34.28 feet to an iron pin found south of an existing culvert;

N 62° 29' 7" E, 1116.88 feet to a point in Grantor's East-line, passing an iron pin found at 1108.91 feet, and being the point of beginning and containing 18.125 acres more or less ;

Subject to all easements and rights of way of record

Iron pins set are 5/8" by 30" long rebar with plastic I.D. cap Stamped "Branner P.S. 6805"

Bearings based on Grid North N.A.D. 83

The above description is based on a field survey completed April 2015 by

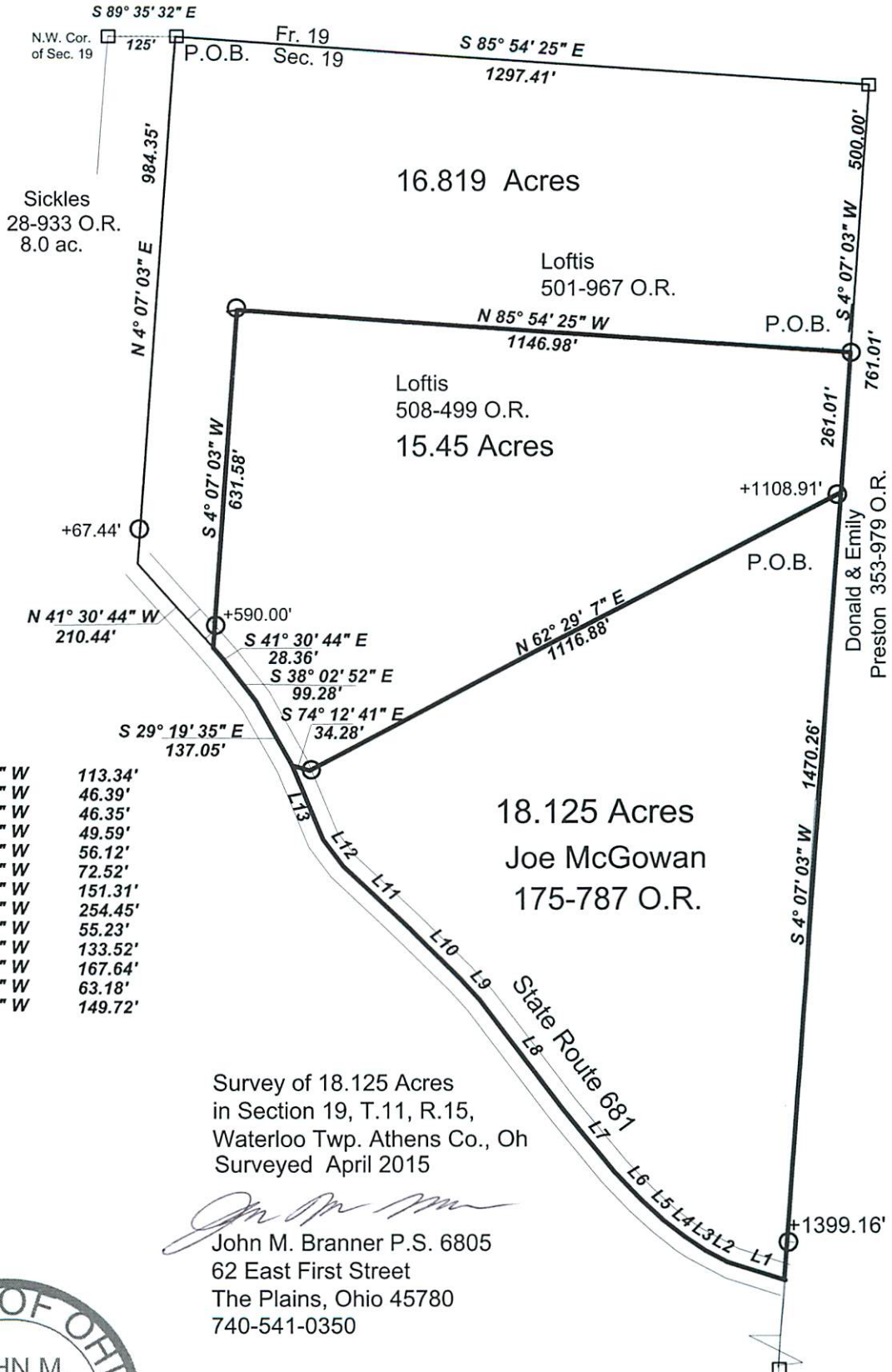
John M. Branner P.S. 6805



Description Checked for
Mathematical Accuracy
Athens County

ENGINEER'S OFFICE

BY: *Ernest Williams*
DATE: 10/21/15



Line	Bearing	Distance
1	N 72° 27' 27" W	113.34'
2	N 62° 18' 41" W	46.39'
3	N 56° 29' 24" W	46.35'
4	N 51° 44' 34" W	49.59'
5	N 47° 15' 03" W	56.12'
6	N 43° 37' 31" W	72.52'
7	N 39° 23' 43" W	151.31'
8	N 36° 52' 33" W	254.45'
9	N 42° 12' 26" W	55.23'
10	N 45° 48' 23" W	133.52'
11	N 47° 09' 54" W	167.64'
12	N 36° 44' 42" W	63.18'
13	N 22° 40' 16" W	149.72'

Survey of 18.125 Acres
in Section 19, T.11, R.15,
Waterloo Twp. Athens Co., Oh
Surveyed April 2015

John M. Branner
John M. Branner P.S. 6805
62 East First Street
The Plains, Ohio 45780
740-541-0350



Scale 1 inch = 200 feet
 ○ = iron pin set 5/8"x 30" rebar w/ plastic I.D. cap
 □ = Stone found
 Bearings: Grid North N.A.D. 83
 Ref. Docs.: Deeds- Tax Plats-County Surveyors Records