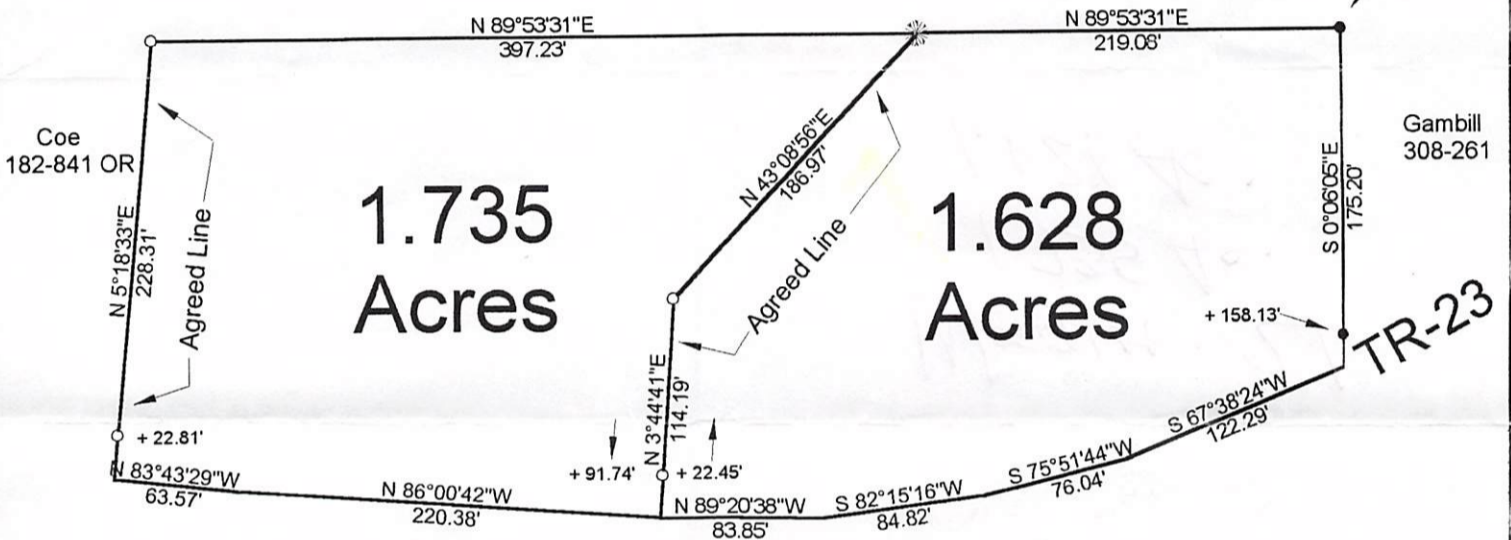




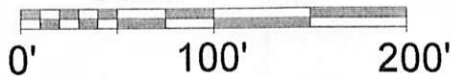
Stobbart
229-189 OR

N.W. corner of
Fraction 36
(per deed)



- = Iron Pin Set
- = Iron Pin Found
- ✱ = 18" Stump w/ Wire

Scale 1"=100'



Description checked for
Mathematical Accuracy
ATHENS COUNTY
ENGINEERS OFFICE
BY: S. Blause
DATE: 3-23-01

PLAT OF SURVEY OF TWO TRACTS

SURVEYED FOR CHUCK CONGRUVE

SUBDIVISION FRAC. 30

TOWNSHIP WATERLOO SECTION 21 TOWN 11 RANGE 15

CORPORATION — COUNTY ATHENS STATE OHIO

SCALE 1"= 100' DATE JAN, 2001

Kenneth E. Highland
80 Fayette St.
Nelsonville, Ohio 45764
740-753-1264

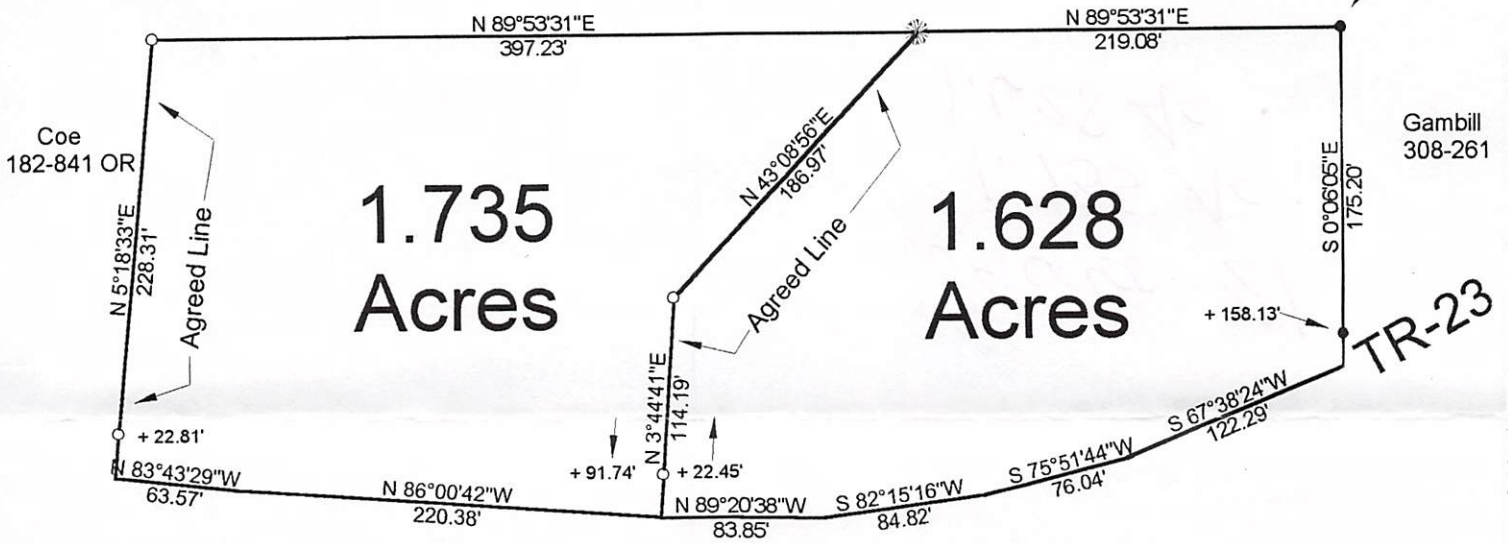
Kenneth E. Highland S-7581





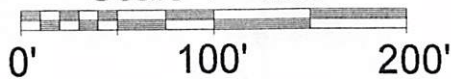
Stobbart
229-189 OR

N.W. corner of
Fraction 36
(per deed)



- = Iron Pin Set
- = Iron Pin Found
- ✱ = 18" Stump w/ Wire

Scale 1"=100'



Description checked for
Mathematical Accuracy
ATHENS COUNTY
ENGINEER'S OFFICE
BY: S. Blause
DATE: 3-23-01

PLAT OF SURVEY OF TWO TRACTS

SURVEYED FOR CHUCK CONGRONE

SUBDIVISION FRAC. 30

TOWNSHIP WATERLOO SECTION 21 TOWN 11 RANGE 15

CORPORATION — COUNTY ATHENS STATE OHIO

SCALE 1"= 100' DATE JAN, 2001

Kenneth E. Highland
80 Fayette St.
Nelsonville, Ohio 45764
740-753-1264

Kenneth E. Highland S-7581

