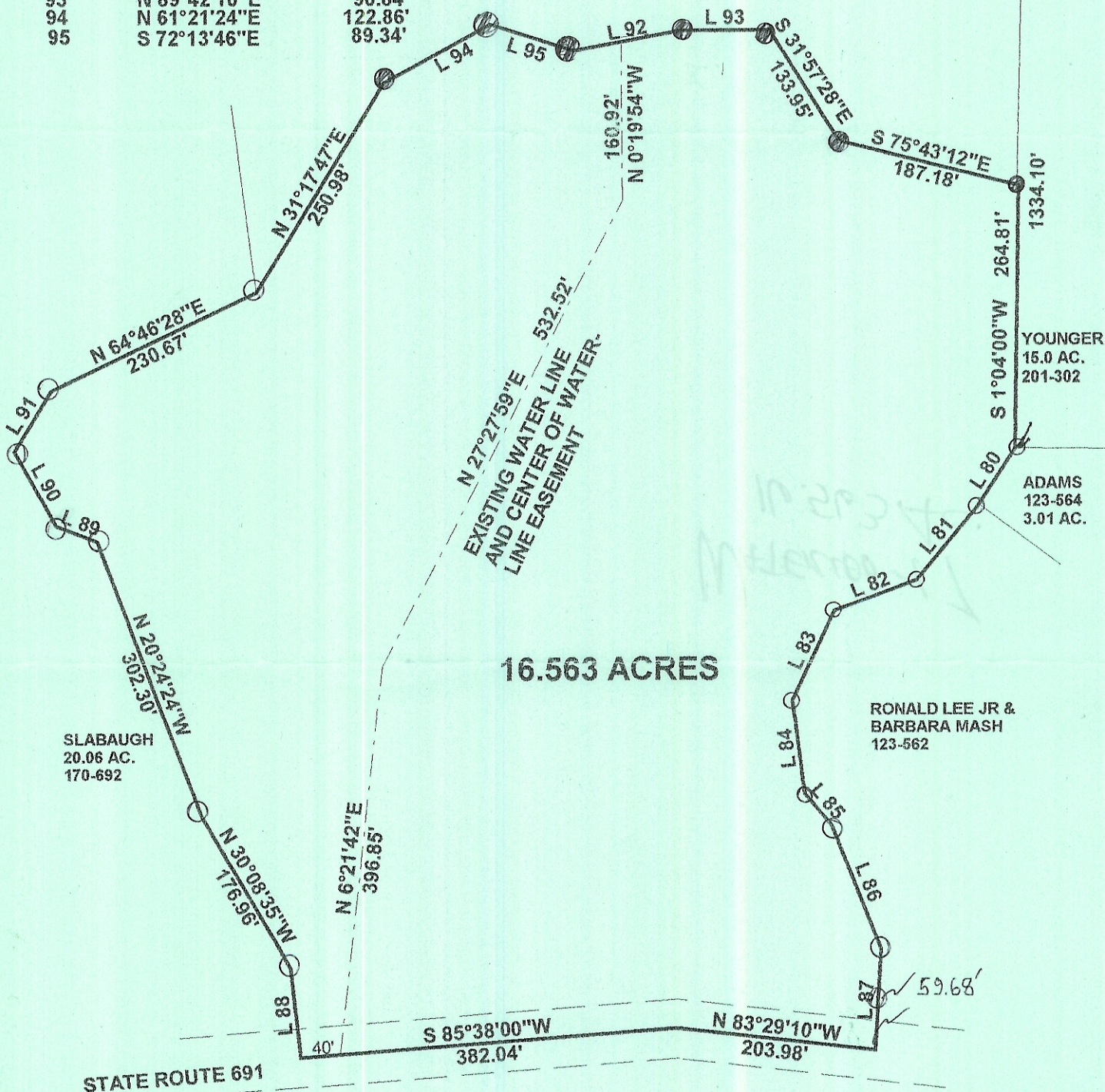


Line	Bearing	Distance
80	S 33°07'31"W	70.51'
81	S 39°36'17"W	97.22'
82	S 68°54'22"W	89.72'
83	S 25°12'39"W	99.36'
84	S 6°54'51"E	98.50'
85	S 40°22'52"E	42.48'
86	S 21°37'00"E	134.31'
87	S 3°21'50"W	101.16'
88	N 6°11'50"W	89.93'
89	N 69°19'00"W	45.13'
90	N 29°22'00"W	86.86'
91	N 31°44'19"E	70.71'
92	N 79°26'14"E	110.51'
93	N 89°42'10"E	90.84'
94	N 61°21'24"E	122.86'
95	S 72°13'46"E	89.34'

MARILYN J. SHEALY &  
SUE ELLEN MILLER  
377-865

N.E. COR OF  
SEC. 17



SURVEY OF A 16.563 ACRE TRACT  
IN SECTION 17, T11., R.15,  
WATERLOO TOWNSHIP  
ATHENS COUNTY, OHIO  
SURVEYED NOVEMBER 2001

BY: *John M. Branner*  
JOHN M. BRANNER P.S. 6805  
12500 N. PEACH RIDGE ROAD  
ATHENS, OHIO 45701  
(740) 592-5778

Description checked for  
Mathematical Accuracy  
ATHENS COUNTY  
ENGINEER'S OFFICE  
BY: *S. Blaus*  
DATE: *12-7-01*

N

