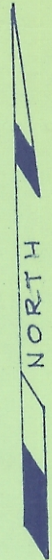


Water 111
25-52

SURVEY OF 0.819 ACRES SITUATED IN FRACTION 18
SECTION 21 T11N. R15W. WATERLOO TWP. ATHENS
CO. OHIO FOR WADE SIDDER
SOLD BY CHARLES A. & WANDA DICKEN

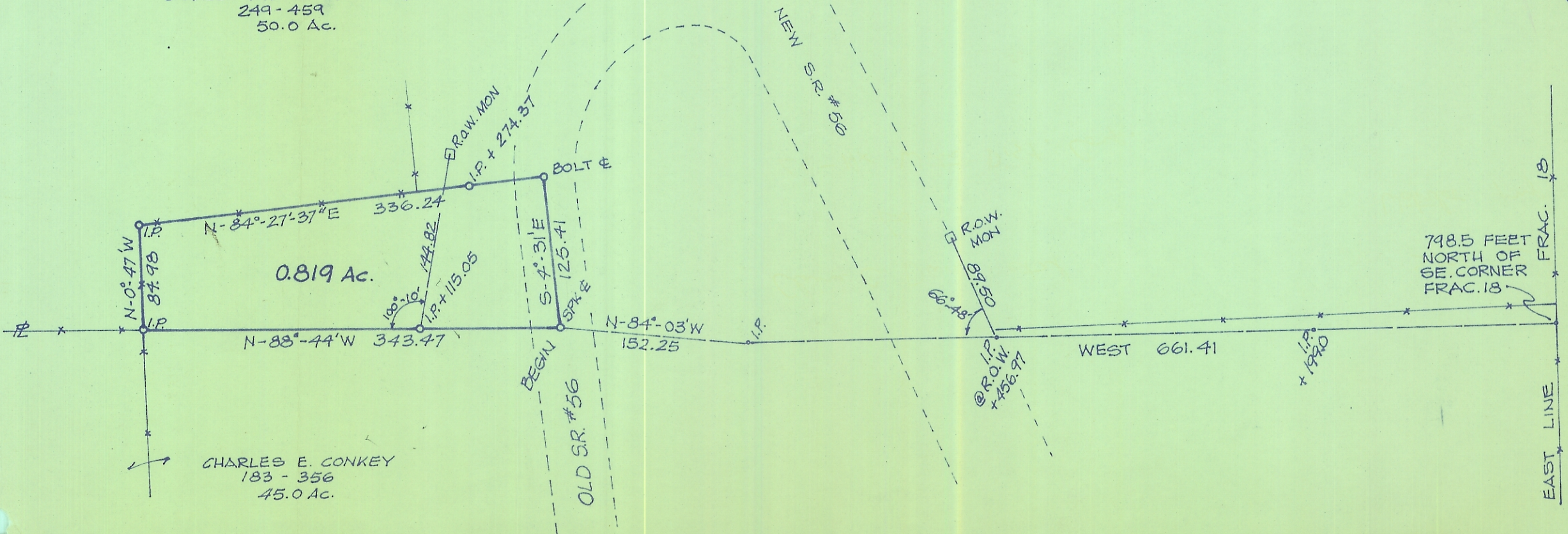
SURVEYED BY F.A. DIXON REG. ENGR 9786
JULY 28, 1973 SURV. 3060

SCALE 1" = 100'



CHARLES A. & WANDA DICKEN
249 - 459
50.0 Ac.

CHARLES E. CONKEY
183 - 356
45.0 Ac.



798.5 FEET
NORTH OF
SE. CORNER
FRAC. 18

EAST LINE
FRAC. 18