

Being a part of Fraction 18, Section 22, T-11-N,
R-15-W, Waterloo Township, Athens County,
State of Ohio.

Note: Bearings are assumed and are for
the determination of angles only.

All iron pins set are 5/8"X30" rebar with
plastic ID cap stamped "CTS-6844".

"Approved by the Athens
County Regional Planning
Commission; No plat
Required"

Bob Eckenberg 8-8-05
Planning Director Date
*No building site intended.
Health Dept. approval not
required*
N 72°30'31" E

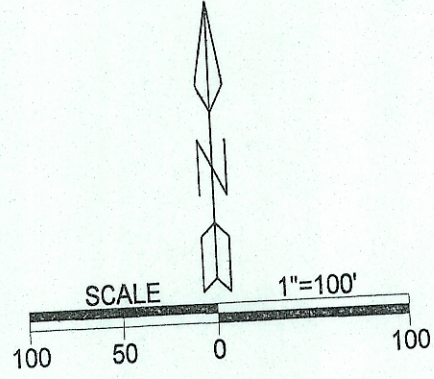
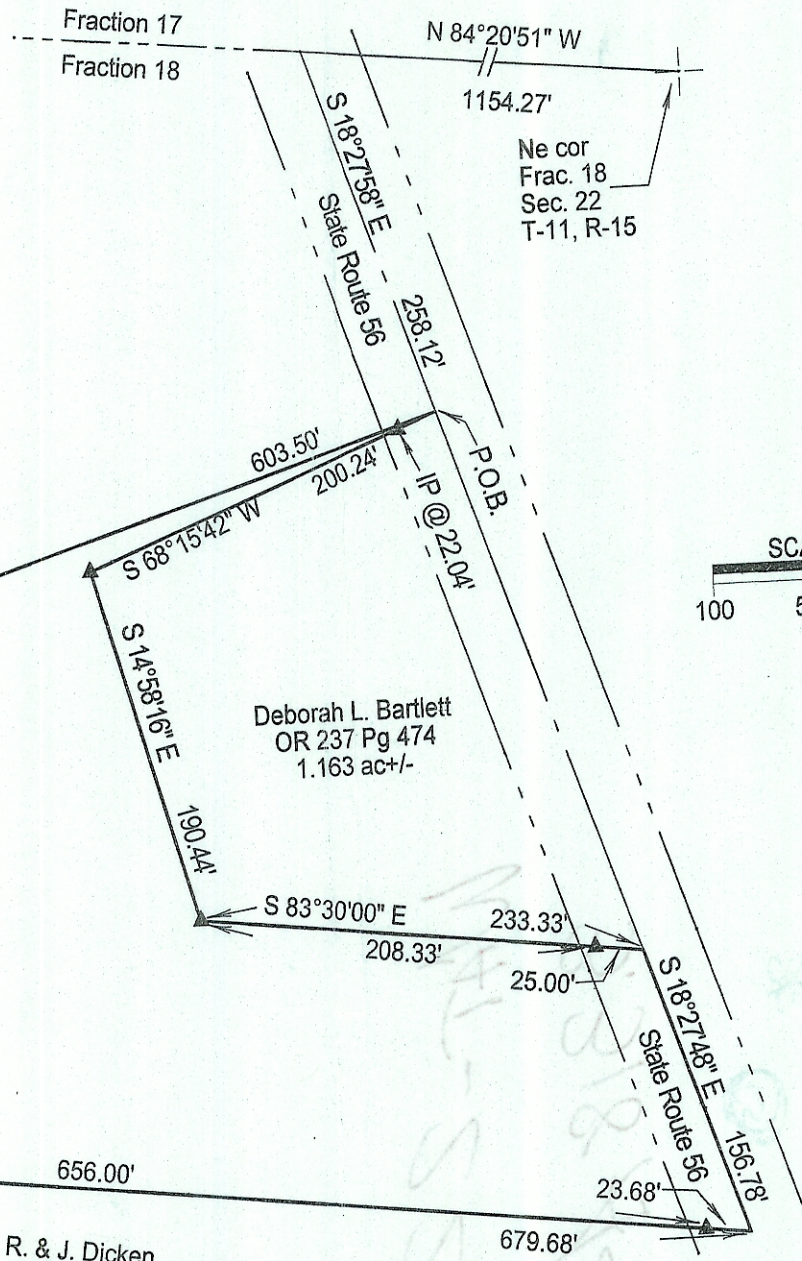
Larry E. Radford
DB 336 Pg 625

BY: *S. J. Radford*
DATE: *7-14-05*
Description Checked
Mathematical Accuracy
Athens County
ENGINEER'S OFFICE
Larry E. Radford
DB 336 Pg 625

3.318 ac+/-
Larry E. Radford
DB 336 Pg 625

Plat prepared from an actual survey made on
the 1st day of July, 2005 by,
C. T. Dickel
Ohio Professional Surveyor No. 6844

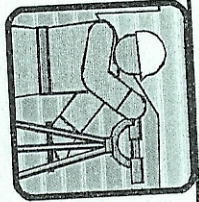
R. & J. Dicken
DB 306 Pg 841



LEGEND

△	Iron pin set
▲	Iron pin found
•	Point

REFERENCES
Current Tax Plats
Previous surveys
Deeds: as noted



C. Thomas Smith
Ohio Professional Surveyor
P.O. Box 393
Racine, Ohio 45771
740-949-2524