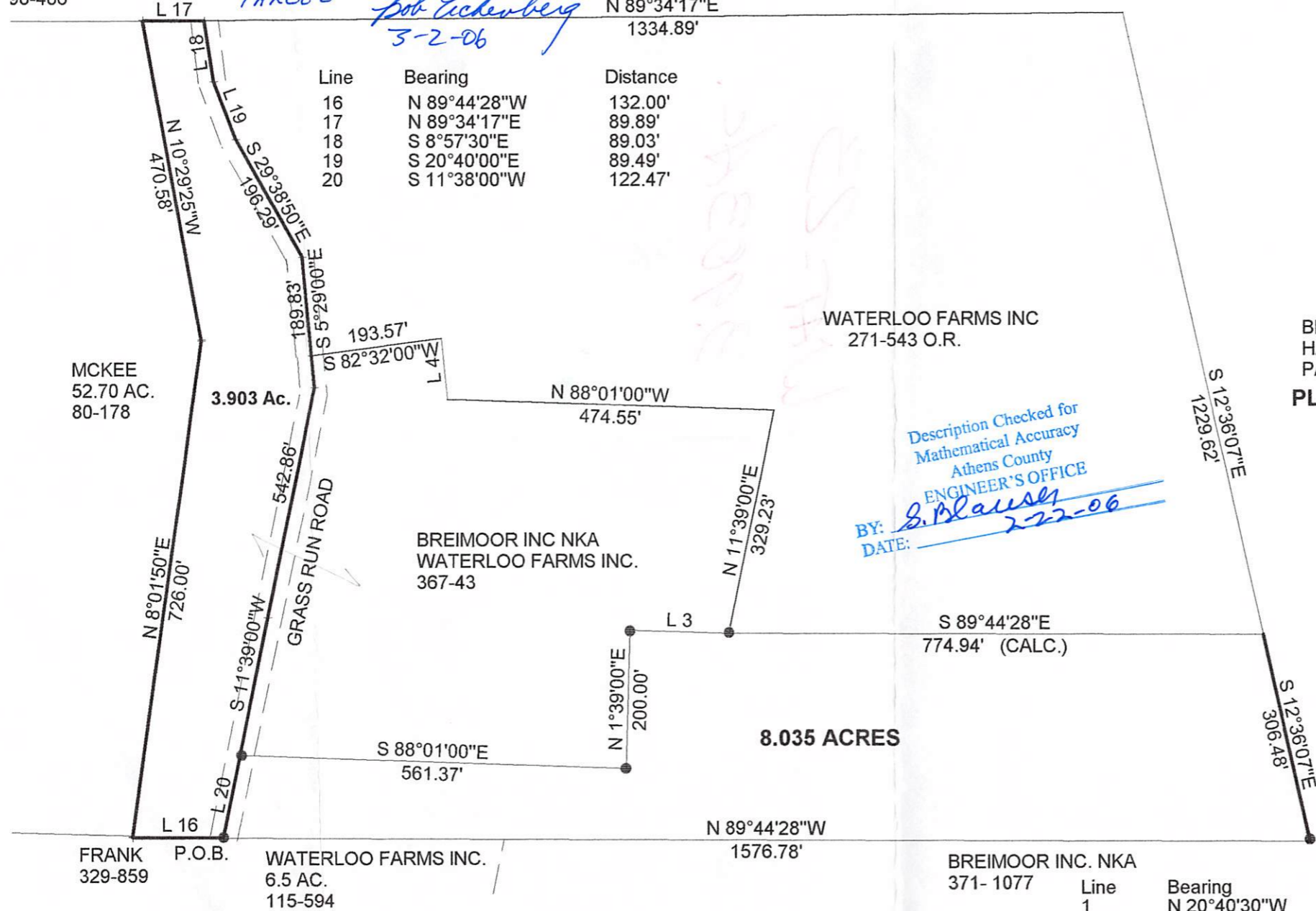


HOUDEK
98-486

OK TO TRANSFER - HEALTH DEPT.
APPROVAL NOT REQUIRED - PARCEL TO
BE CONTINUOUS & CONTIGUOUS W/ 8.035 ac.
PARCEL *Bob Eichenberg*
3-2-06



Line	Bearing	Distance
16	N 89°44'28"W	132.00'
17	N 89°34'17"E	89.89'
18	S 8°57'30"E	89.03'
19	S 20°40'00"E	89.49'
20	S 11°38'00"W	122.47'

WATERLOO FARMS INC
271-543 O.R.

Description Checked for
Mathematical Accuracy
Athens County
ENGINEER'S OFFICE
BY: *S. Blausen*
DATE: *2-22-06*

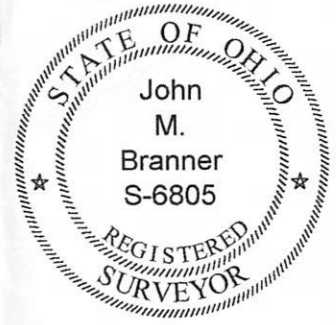
BEARINGS AND DISTANCES BASED ON A SURVEY BY
HAROLD D. WHALEY RLS 4986 ON SURVEY OF THE
PARENT TRACT OF 11.92 ACRES
**PLAT OF DESCRIPTION OF A 3.903 ACRE TRACT I
SECTION 23 , T.11 , R.15 , WATERLOO TWP.
ATHENS COUNTY, OHIO
FEB. 2006**

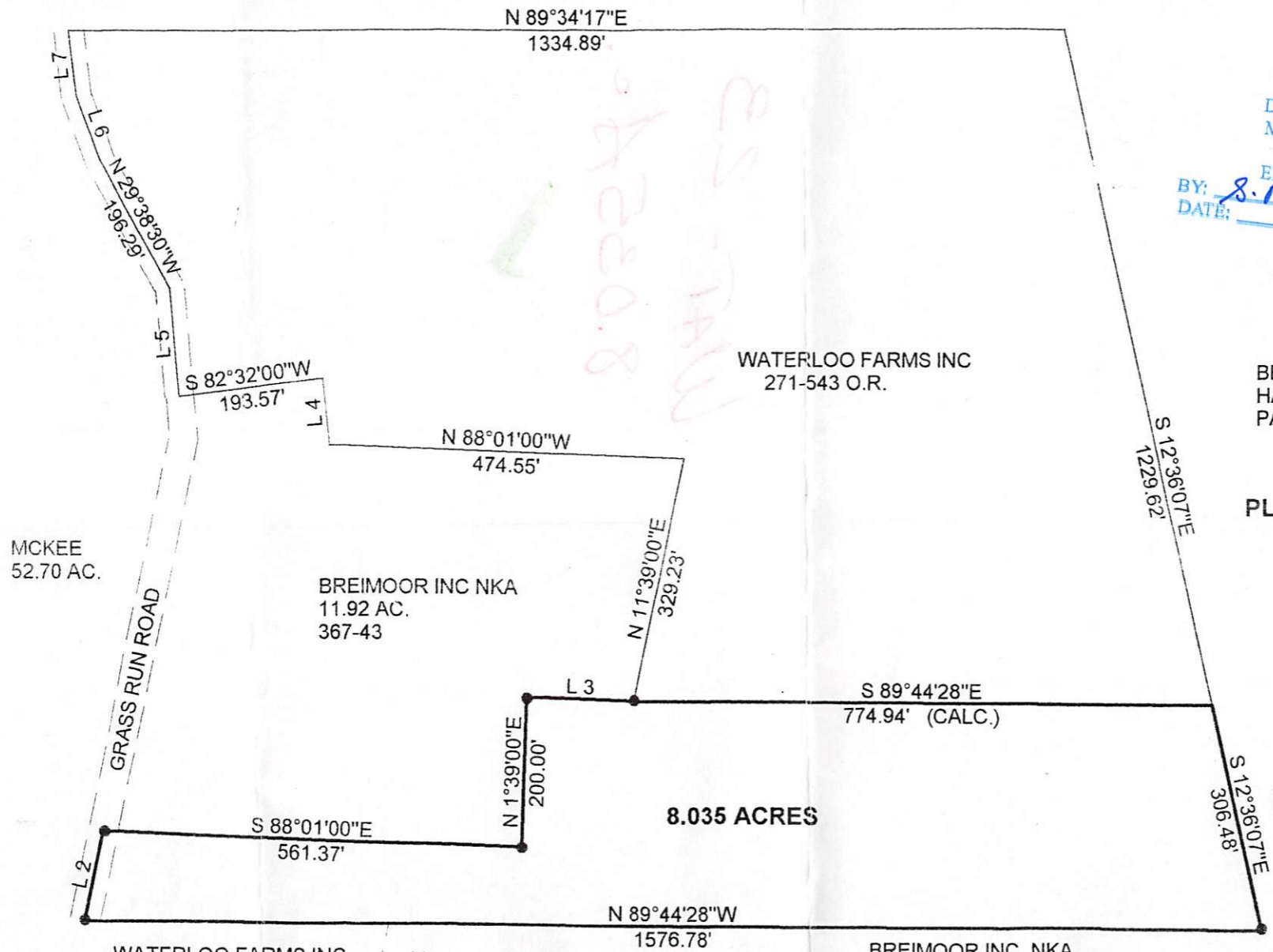
BY: *John M. Branner*
**JOHN M. BRANNER P.S. 6805
12500 N. PEACH RIDGE ROAD
ATHENS, OHIO 45701
(740) 592-5778**

WATERLOO FARMS INC.
11.69 AC.
102-821

P.O.B. BEARS S 01 17 26 W 3135.00'
AND N 89 44 28 W 2357.90' FROM
THE N.E. COR. OF SECTION 23

Line	Bearing	Distance
1	N 20°40'30"W	89.49'
2	N 11°38'00"E	122.47'
3	S 88°01'00"E	143.56'
4	N 5°29'00"W	88.55'
5	N 5°29'00"W	143.50'
6	N 20°40'30"W	89.49'
7	N 6°57'30"W	89.03'





Description Checked for
Mathematical Accuracy
Athens County
ENGINEER'S OFFICE
BY: S. Blauss
DATE: 1-13-06



SCALE 1 INCH = 200 FEET
● = IRON PIN AS PER DEED

BEARINGS AND DISTANCES BASED ON A SURVEY BY
HAROLD D. WHALEY RLS 4986 ON SURVEY OF THE
PARENT TRACT OF 29.9127 ACRES

**PLAT OF DESCRIPTION OF A 8.305 ACRE TRACT I
SECTION 23 , T.11 , R.15 , WATERLOO TWP.
ATHENS COUNTY, OHIO**

BY: [Signature]
**JOHN M. BRANNER P.S. 6805
12500 N. PEACH RIDGE ROAD
ATHENS, OHIO 45701
(740) 592-5778**

WATERLOO FARMS INC.
6.5 AC.
115-594

Line	Bearing	Distance
1	N 20°40'30"W	89.49'
2	N 11°38'00"E	122.47'
3	S 88°01'00"E	143.56'
4	N 5°29'00"W	88.55'
5	N 5°29'00"W	143.50'
6	N 20°40'30"W	89.49'
7	N 6°57'30"W	89.03'

BREIMOOR INC. NKA
371- 1077
P.O.B. BEARS S 01 17 26 W 3135.00'
AND N 89 44 28 W 781.12' FROM
THE N.E. COR. OF SECTION 23

WATERLOO FARMS INC.
11.69 AC.
102-821

P.O.B.

