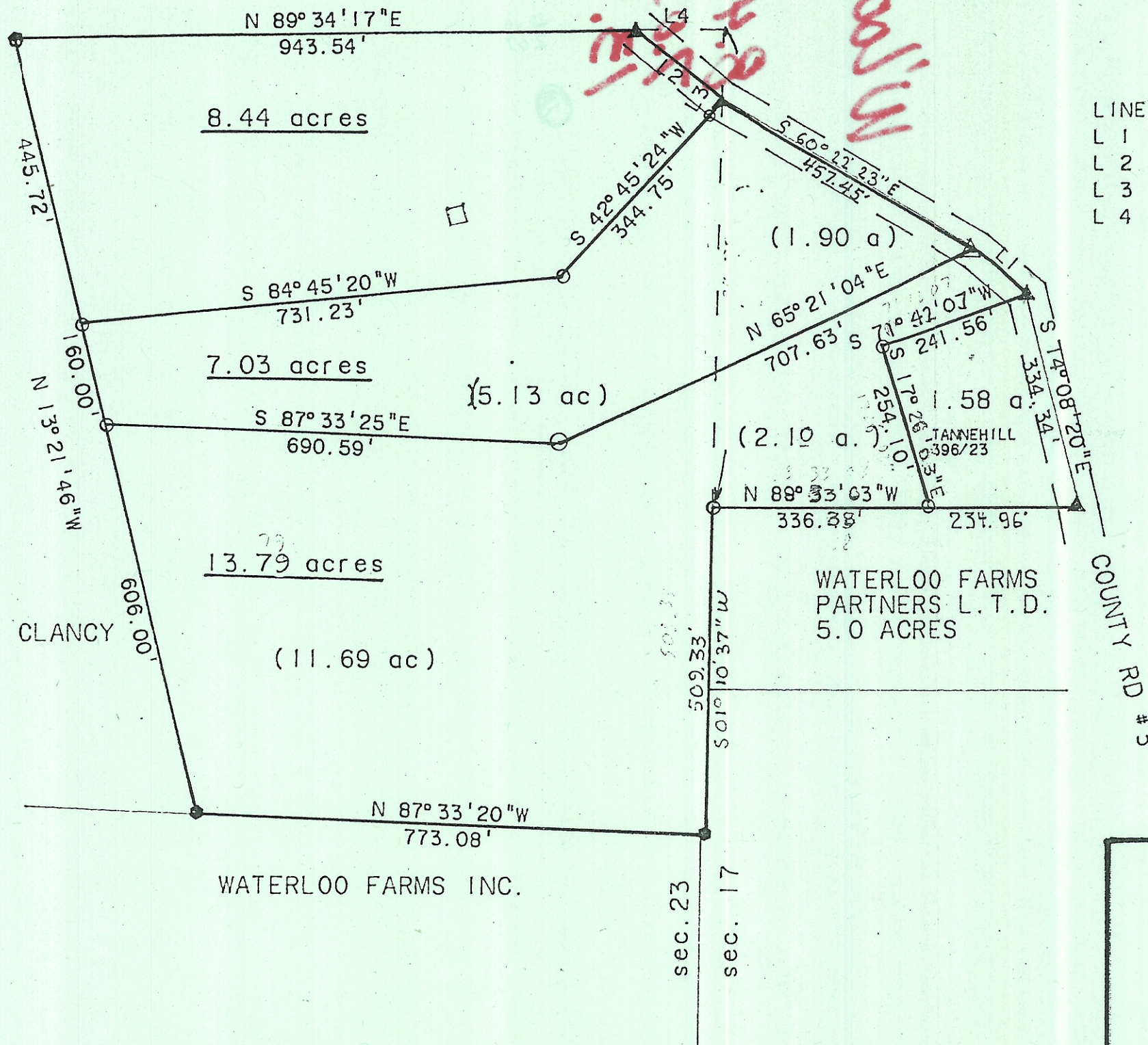


BREEDING  
31.99 AC.

*Handwritten red notes:*  
6.44  
7.03  
13.79  
11.69  
5.0  
8.15



LINE	BEARING	DISTANCE
L 1	S 48° 51' 17" E	105.28'
L 2	S 51° 36' 28" E	168.35'
L 3	S 32° 18' 25" W	19.15'
L 4	N 89° 34' 17" E	133.98'



SCALE: 1" = 200'

- O = IRON PIN SET
  - = IRON PIN FOUND
  - ▲ = RAILROAD SPIKE FOUND
  - △ = RAILROAD SPIKE SET
- BASIS OF BEARINGS IS NORTH-LINE

COUNTY RD #3

SURVEY OF THREE TRACTS IN SECTIONS 17 AND 23, T. 11, R. 15, WATERLOO TOWNSHIP, ATHENS COUNTY, OHIO  
FOR WATERLOO FARMS INC.  
SURVEYED JUNE 1991

*John M. Branner*  
JOHN M. BRANNER P.S. 6805  
12500 N. PEACH RIDGE ROAD  
ATHEHS, OHIO 592-5778

