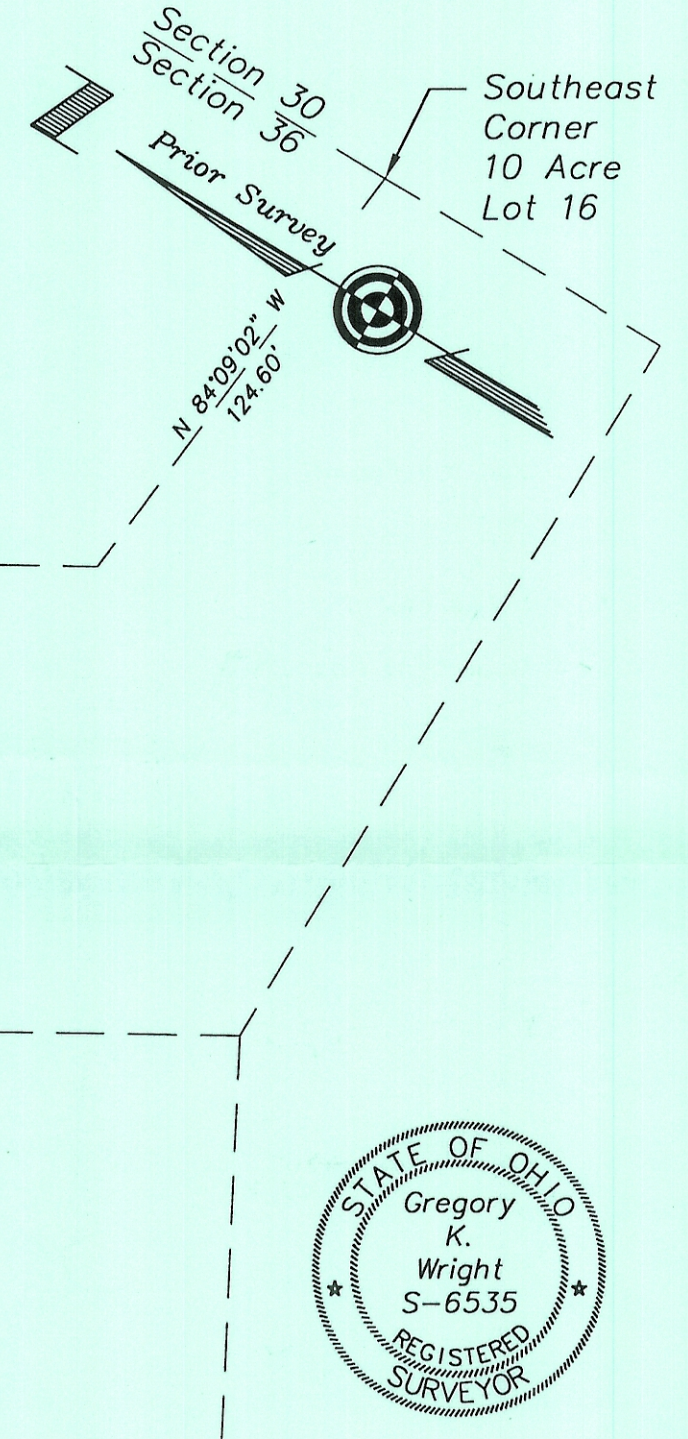


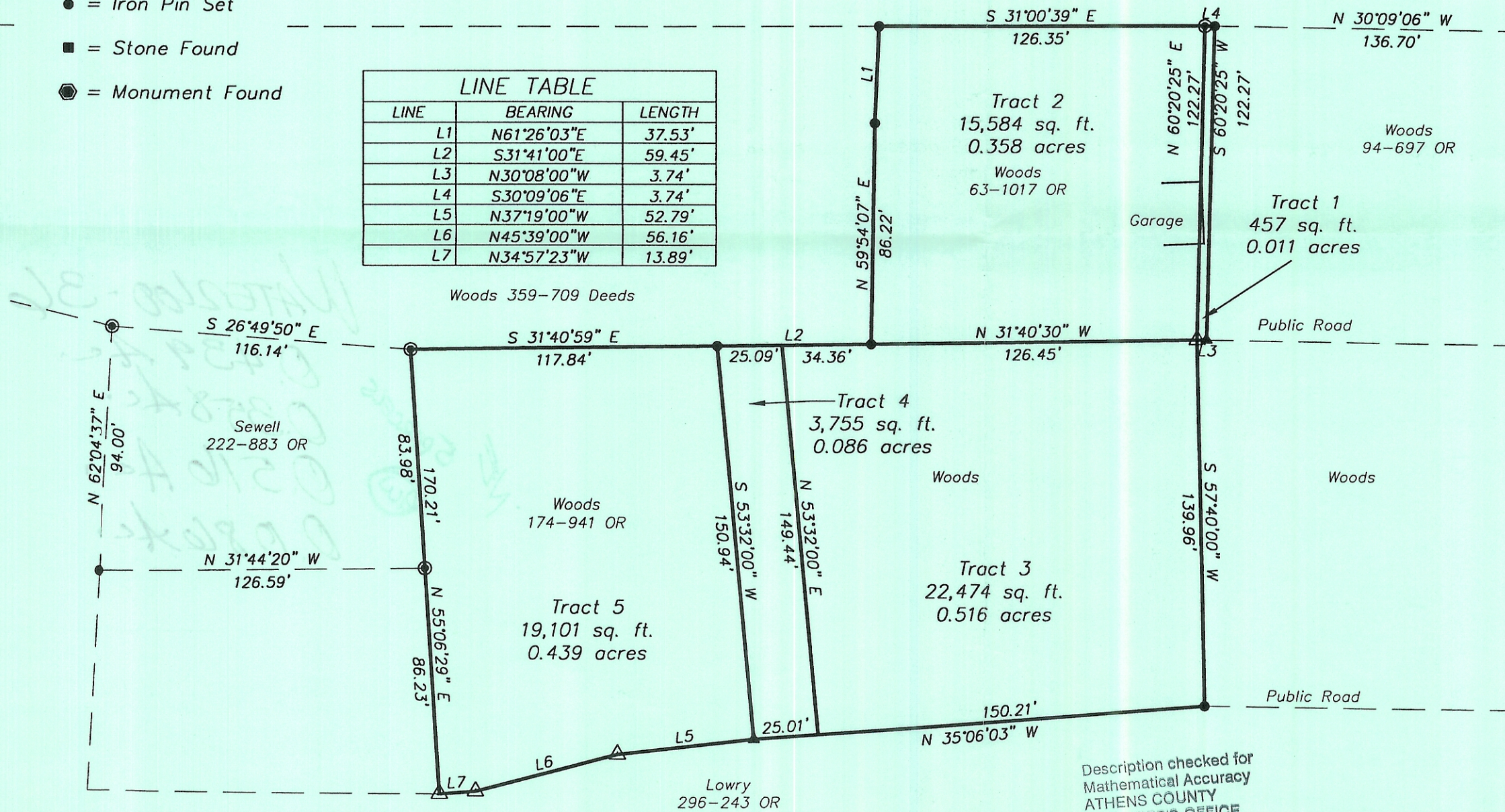
Plat of Survey of 5 Parcels
 Situated in Section 36, Town 11, Range 15,
 Waterloo Township, Athens County, Ohio
 Surveyed January 2001 for:
 Donald Pidcock

Gregory K. Wright
 Gregory K. Wright



- △ = P.K. Nail Set
- ▲ = Railroad Spike Set
- ⊙ = Iron Pin Found
- = Iron Pin Set
- = Stone Found
- ⊗ = Monument Found

LINE TABLE		
LINE	BEARING	LENGTH
L1	N61°26'03"E	37.53'
L2	S31°41'00"E	59.45'
L3	N30°08'00"W	3.74'
L4	S30°09'06"E	3.74'
L5	N37°19'00"W	52.79'
L6	N45°39'00"W	56.16'
L7	N34°57'23"W	13.89'



Description checked for
 Mathematical Accuracy
 ATHENS COUNTY
 ENGINEER'S OFFICE
 BY: *S. Klausner*
 DATE: *1-26-01*

Gregory K. Wright
 Professional Engineer
 Professional Surveyor
 11684 Channingway Blvd
 The Plains, Ohio 45780
 740-797-4142
 FAX 740-797-8623
 P-00285