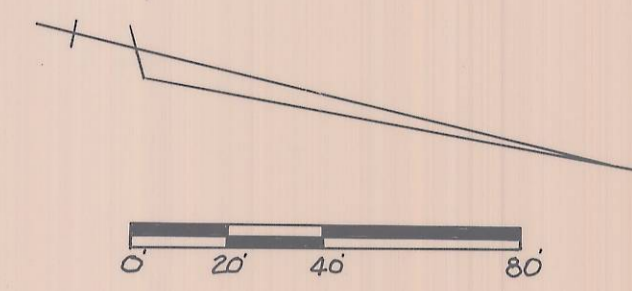
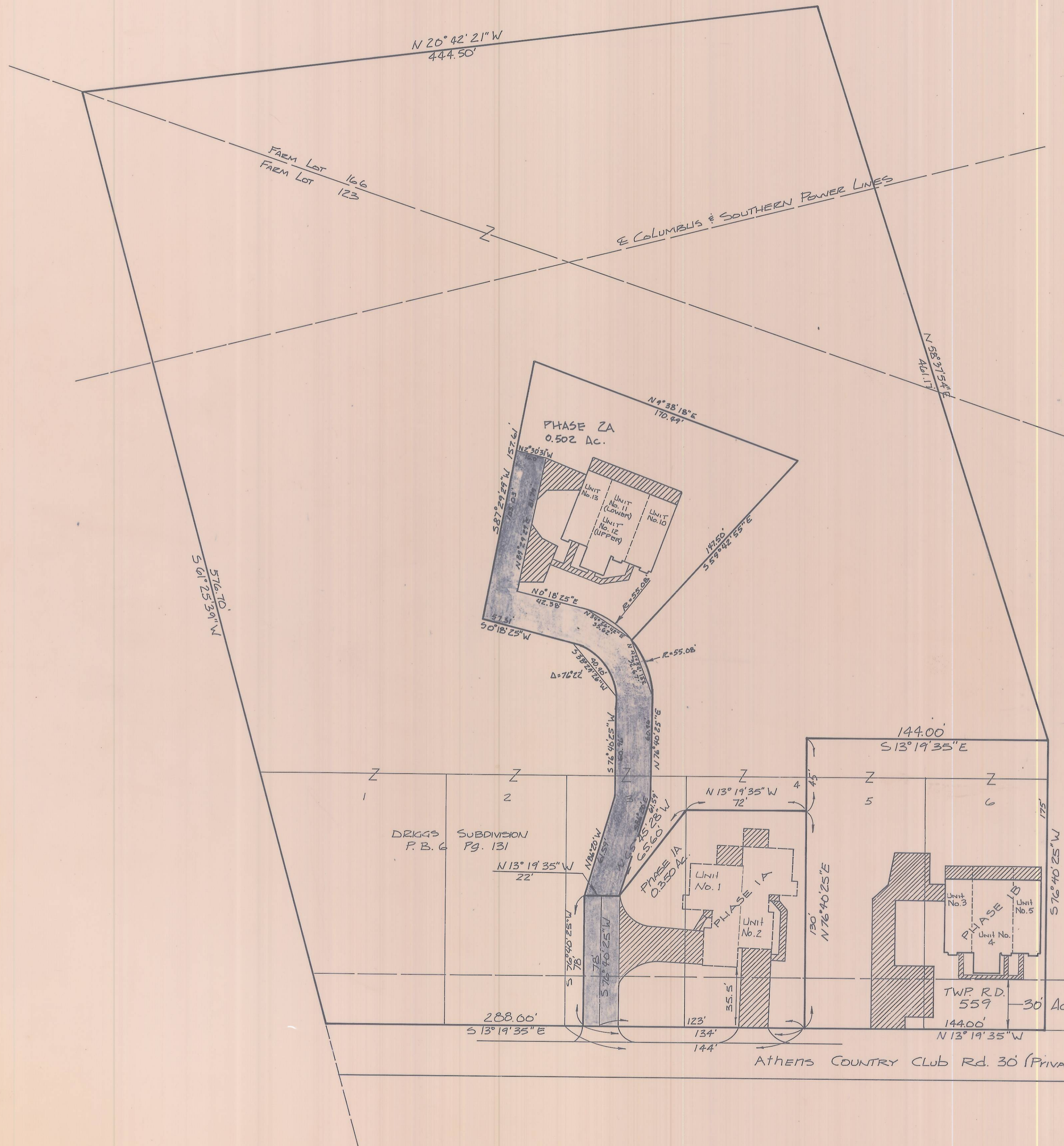


178569
 EXHIBIT A
 WOODMERE CONDOMINIUM
 PHASE 2A

ENVELOPE: 45B

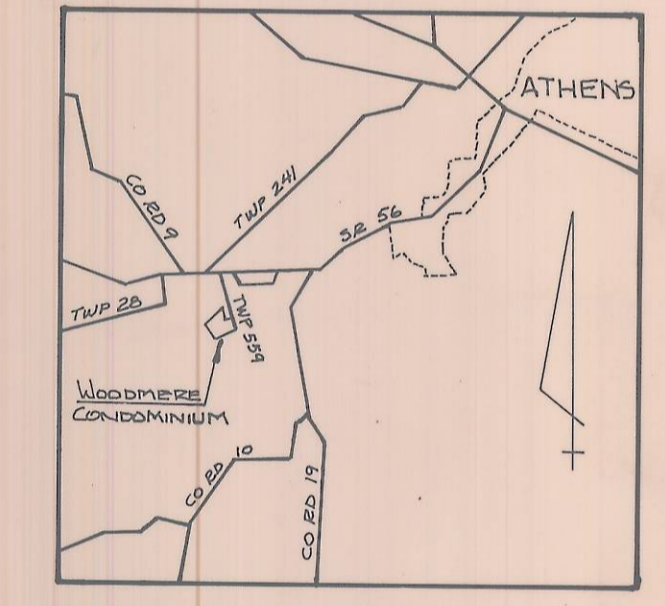
WOODMERE CONDOMINIUM PHASE 2A
 FARM LOTS 123 & 166
 ATHENS TWP



LEGEND-PHASE

- DENOTES COMMON AREA
- ▨ DENOTES COMMON AREA DRIVE
- ▩ DENOTES LIMITED COMMON AREA

1.249 Acres In F.L. 166
 4.416 Acres In F.L. 123 (Includes Lots 1-4)
 5.665 Acres Total
 0.579 Acres In F.L. 123 (Includes Lots 5 & 6)
 6.244
 - .350 Acres - Phase 1A
 - .579 Acres - Phase 1B
 - .502 Acres - Phase 2A
 4.813 Acres Remaining

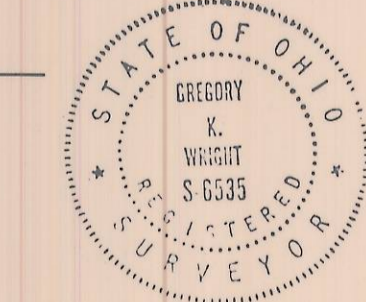


LOCATION MAP

I HEREBY CERTIFY THAT THIS DRAWING ACCURATELY SHOWS THE BUILDING AND OTHER IMPROVEMENTS AS LOCATED AND AS CONSTRUCTED OR TO BE CONSTRUCTED AT WOODMERE CONDOMINIUM (PHASE 2A), AND THAT THERE ARE NO ENCROACHMENTS ON ANY ADJUTING PREMISES.

Gregory K. Wright
 DATE 6-26-86

178569
 RECORDED June 26 1986
 At 1:00 O'CLOCK P.M.
 Vol. 10 Pg. 90
 RECORD OF PLATS
 WILMA ALLEN RECORDER
 ATHENS COUNTY, OHIO
 ENV. 45 B # 4320



WOODMERE CONDOMINIUM
 Farm Lots 123 & 166
 ATHENS TOWNSHIP
 ATHENS COUNTY, OHIO
 SCALE 1"=40' - OCT 1985

PREPARED BY
 EVANS, MECHWAERT, HAMBELTON & TILTON INC.
 CONSULTING ENGINEERS AND SURVEYORS
 ATHENS, OHIO AND COLUMBUS, OHIO

See O.R. Vol 9 Pg 809
 for Third Amendment