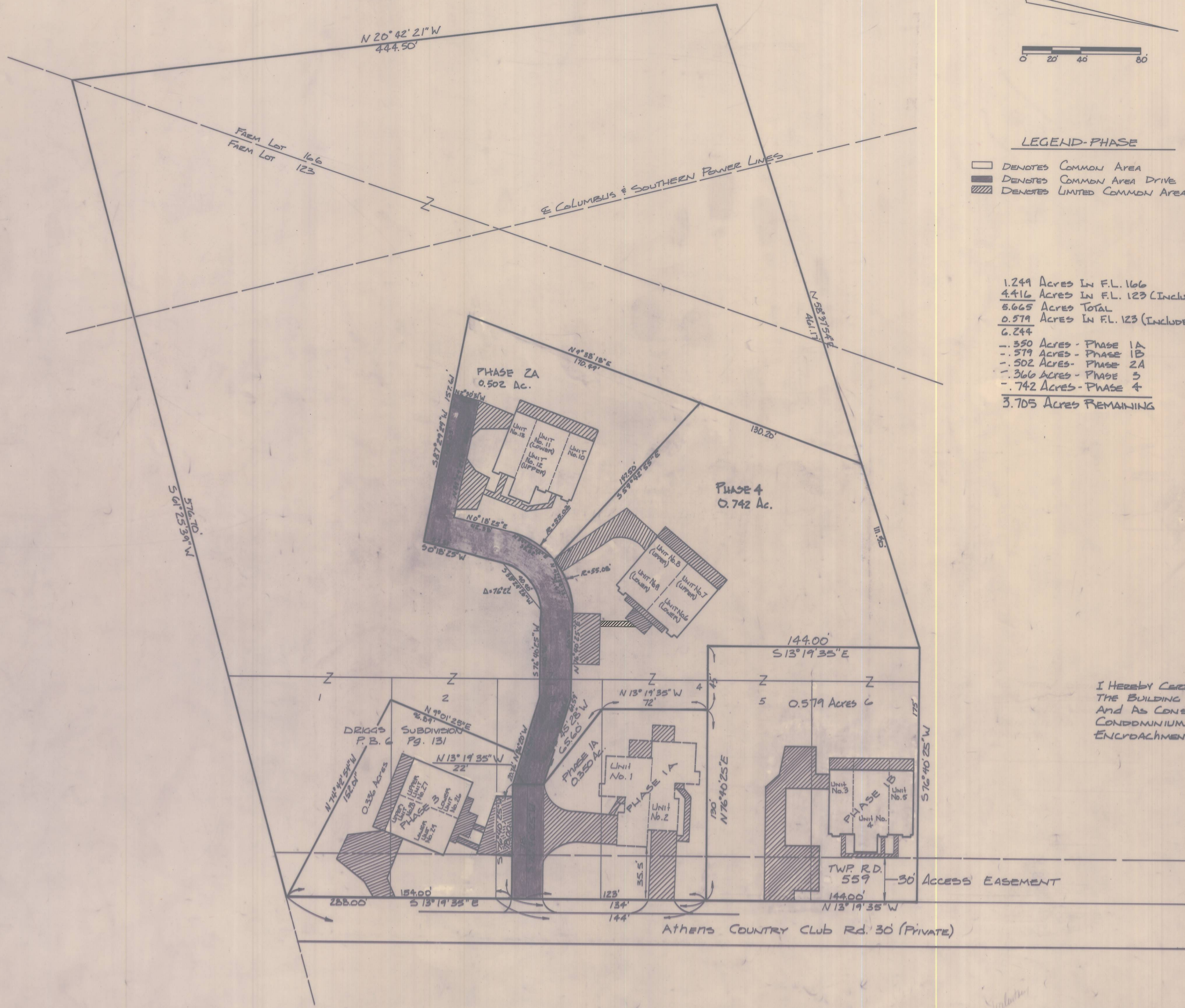


EXHIBIT A
WOODMERE CONDOMINIUM
PHASE 4

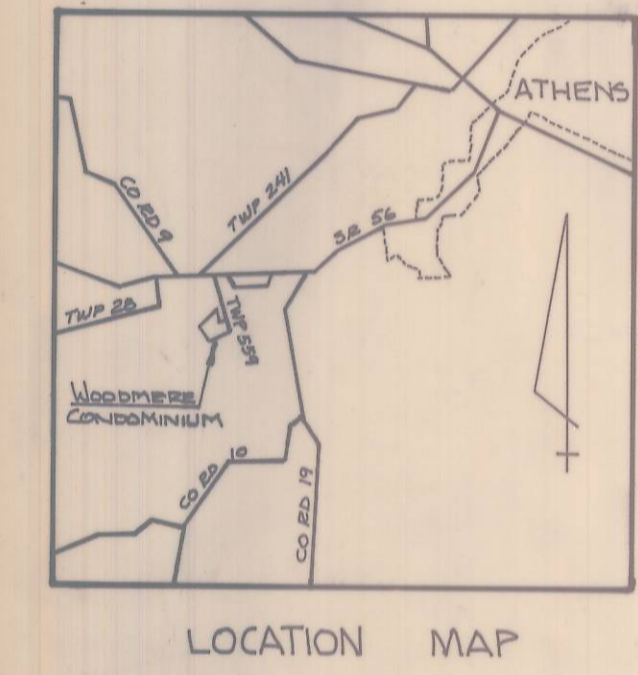
ENVELOPE: 53A

WOODMERE CONDOMINIUM PHASE IV
FARM LOTS 123 & 166
ATHENS TWP



LEGEND-PHASE
 □ DENOTES COMMON AREA
 ■ DENOTES COMMON AREA DRIVE
 ▨ DENOTES LIMITED COMMON AREA

1.244 Acres In F.L. 166
 4.416 Acres In F.L. 123 (Includes Lots 1-4)
 5.665 Acres TOTAL
 0.579 Acres In F.L. 123 (Includes Lots 5-6)
 6.244
 - .350 Acres - Phase 1A
 - .579 Acres - Phase 1B
 - .502 Acres - Phase 2A
 - .366 Acres - Phase 3
 - .742 Acres - Phase 4
 3.705 Acres REMAINING



I HEREBY CERTIFY THAT THIS DRAWING ACCURATELY SHOWS THE BUILDING AND OTHER IMPROVEMENTS AS LOCATED AND AS CONSTRUCTED OR TO BE CONSTRUCTED AT WOODMERE CONDOMINIUM (PHASE 4), AND THAT THERE ARE NO ENCROACHMENTS ON ANY ADJUTING PREMISES.

Gregory K. Weight
 DATE 8/2/88



194498
 RECORDED Aug 31 1988
 At 8:00 O'CLOCK A.M.
 PLAT - Vol. 10 Pl. 104
 RECORD OF PLATS
 Julia MICHAEL SCOTT, RECORDER
 ATHENS COUNTY, OHIO
 ENV 53A
 43.20

WOODMERE CONDOMINIUM
 FARM LOTS 123 & 166
 ATHENS TOWNSHIP
 ATHENS COUNTY, OHIO
 SCALE 1" = 40' - OCT 1985

PREPARED BY
 EVANS, MECHWAERT, HAMBLETON & TILTON INC.
 CONSULTING ENGINEERS AND SURVEYORS
 ATHENS, OHIO AND COLUMBUS, OHIO

Plan for Woodmere Condominium