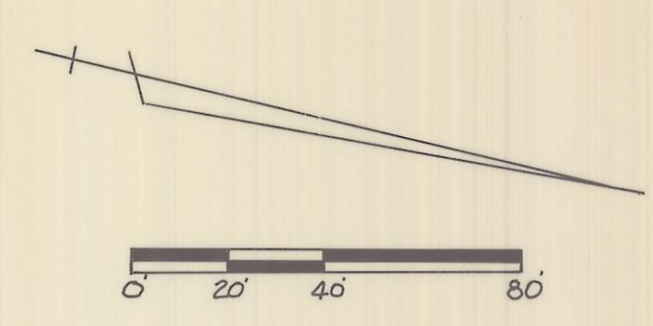
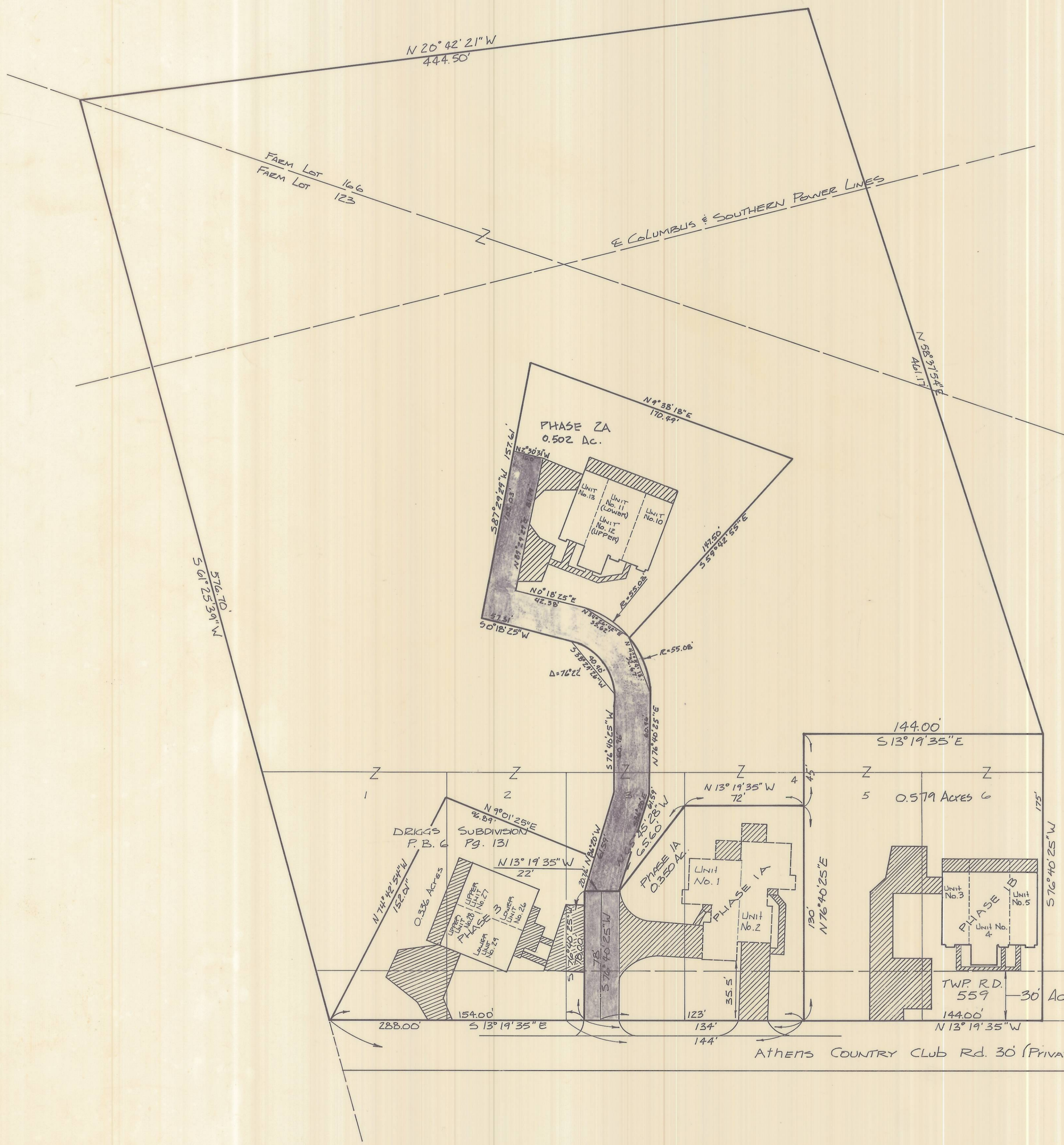


EXHIBIT A  
WOODMERE CONDOMINIUM  
PHASE 3



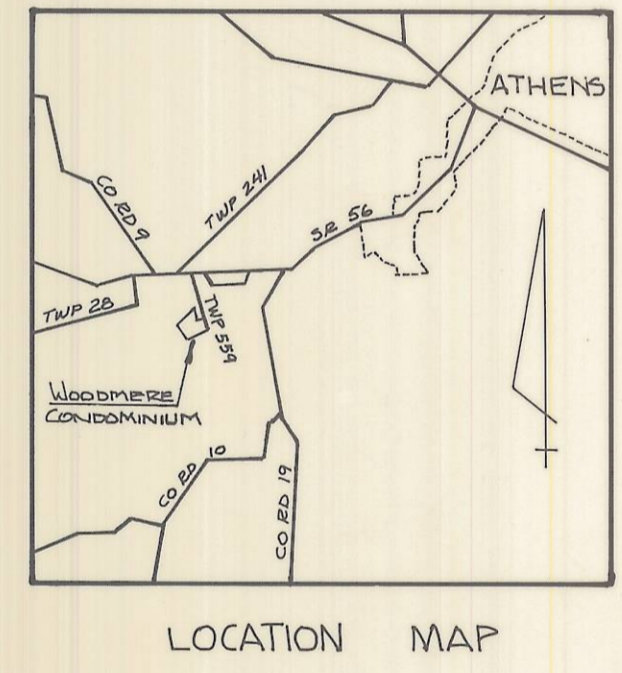
ENVELOPE: 49B

WOODMERE CONDOMINIUM PHASE III  
FARM LOTS 123 & 166  
ATHENS TWP

**LEGEND-PHASE**

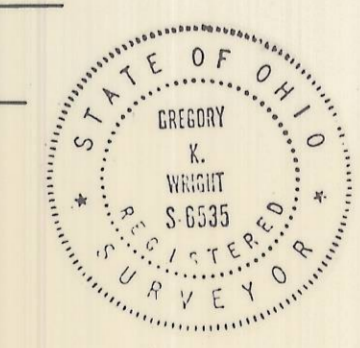
□ DENOTES COMMON AREA  
▨ DENOTES COMMON AREA DRIVE  
▩ DENOTES LIMITED COMMON AREA

1.249 Acres In F.L. 166  
4.416 Acres In F.L. 123 (Includes Lots 1-4)  
5.665 Acres Total  
0.579 Acres In F.L. 123 (Includes Lots 5 & 6)  
6.244  
-.350 Acres - Phase 1A  
-.579 Acres - Phase 1B  
-.502 Acres - Phase 2A  
-.366 Acres - Phase 3  
4.477 Acres Remaining



I HEREBY CERTIFY THAT THIS DRAWING ACCURATELY SHOWS THE BUILDING AND OTHER IMPROVEMENTS AS LOCATED AND AS CONSTRUCTED OR TO BE CONSTRUCTED AT WOODMERE CONDOMINIUM (PHASE 3), AND THAT THERE ARE NO ENCROACHMENTS ON ANY ADJUTING PREMISES.

*Gregory E. Weight*  
DATE 3-3-88



191099  
RECORDED March 4 1988  
At 2:19 O'CLOCK P.M.  
Vol. 10 Pg. 98  
RECORD OF PLATS  
Julia Michael Scott, RECORDER  
ATHENS COUNTY, OHIO  
4/20  
Env. 49B

**WOODMERE CONDOMINIUM**  
FARM LOTS 123 & 166  
ATHENS TOWNSHIP  
ATHENS COUNTY, OHIO  
SCALE 1"=40' - OCT 1985

PREPARED BY  
EVANS, MECHWART, HAMELTON & TILTON INC.  
CONSULTING ENGINEERS AND SURVEYORS  
ATHENS, OHIO AND COLUMBUS, OHIO