

**BRANNER SURVEYING
12500 N. PEACH RIDGE ROAD
ATHENS, OHIO 45701**

DESCRIPTION OF A 2.000 ACRE TRACT

Situated in Section 1, T. 12, R.15, York Township, Athens County, Ohio and being a part of a 4.168 acre tract as described in Volume 194, Page 20 of the Official Records of Athens County and being more particularly described as follows:

Commencing at the South-east corner of River-lot 362 , thence, North 86 degrees 34 minutes West, 409.14 feet to a point; thence, North 03 degrees 36 minutes East, 799.44 feet to a point in County Road 110 , thence, along said road, South 68 degrees 52 minutes 34 seconds West, 200.49 feet to a point; thence, South 68 degrees 52 minutes 34 seconds West, 200.49 feet to a point; thence, South 86 degrees 16 minutes 20 seconds West, 1713.02 feet to a point; thence, North 76 degrees 19 minutes 53 seconds West, 602.10 feet to a point at the South-east corner of the aforementioned 4.168 acre tract and being the point of beginning for the tract of land herein described

Thence, continuing along County Road 110, North 76 degrees 19 minutes 53 seconds West, 262.83 feet to a point;

Thence, leaving said road, North 07 degrees 24 minutes 02 seconds East, 317.66 feet to an iron pin set, passing an iron pin set at 50.00 feet;

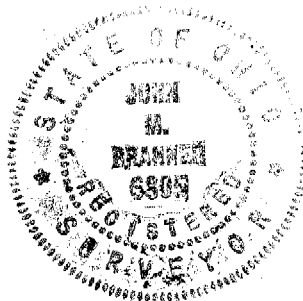
Thence, along the north-line of the aforementioned 4.168 acre tract, South 81 degrees 14 minutes 57 seconds East, 268.29 feet to an existing iron pin at the North-east corner of the aforementioned 4.168 acre tract;

Thence, along the East-line of the aforementioned 4.168 acre tract, South 08 degrees 34 minutes 23 seconds West, 340.10 feet (passing an iron pin set at 300.10 feet) to the point of beginning and containing 2.000 acres.

Subject to all easements and rights of way of record.

All iron pins set are 5/8" by 30 inch long rebar

The above description is based on a field survey completed May 2001 by John M. Branner P.S. 6805



Description checked for
Mathematical Accuracy
ATHENS COUNTY
ENGINEER'S OFFICE
BY: K. Conley
DATE: 5/2/10

Ver A 1

ATHENS PLASTICS INC.
194-20

**SURVEY OF A 2.00 ACRE TRACT IN
SECTION 1, T.12, R.15, YORK TOWNSHIP
ATHENS COUNTY, OHIO
SURVEYED MAY 2001**

BY: *[Signature]*
**JOHN M. BRANNER P.S. 6805
12500 N. PEACH RIDGE ROAD
ATHENS, OHIO 45701
(740) 592-5778**

MBM PROPERTIES
189-741

2.000 ACRES

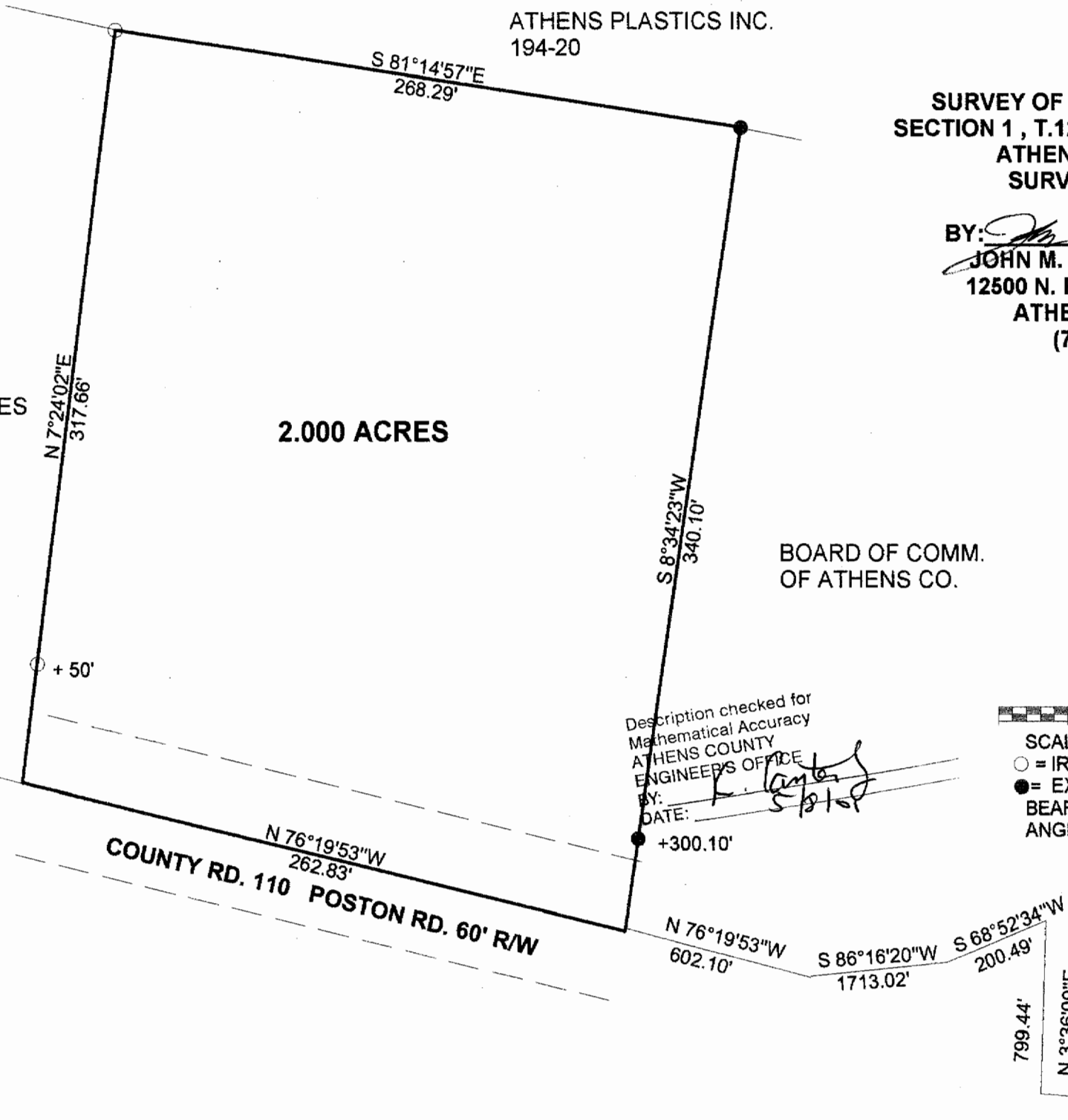
BOARD OF COMM.
OF ATHENS CO.



SCALE 1 INCH = 60 FEET

- = IRON PIN SET
 - = EXISTING IRON PIN
- BEARING ARE TO BE USED TO DENOTE INTERIOR ANGLES ONLY

Description checked for
Mathematical Accuracy
ATHENS COUNTY
ENGINEERS OFFICE
BY: *[Signature]*
DATE: *[Signature]*



N 86°24'00\"W 409.14' S.E. COR OF R.L. 362