

DESCRIPTION OF 0.040 ACRE

Situated in the Village of Buchtel, Sections 12, Township 12, Range 15, York Township, Athens County, Ohio and further described as follows:

Commencing at an iron pin found at the southwest corner of Lot No. 120, said iron pin being the true point of beginning; thence, along the south line of said Lot South 54 degrees 37 minutes 53 seconds East a distance of 180.31 feet to a point, said point being the southeast corner of Lot No. 120; thence, South 88 degrees 26 minutes 13 seconds East a distance of 8.25 feet to an iron pin set; thence, South 01 degrees 33 minutes 45 seconds West, a distance of 13.06 feet to an iron pin set; thence, North 56 degrees 23 minutes 39 seconds West a distance of 186.48 feet to an iron pin set on the extended east line of First Street; thence, North 01 degrees 33 minutes 38 seconds East, along said extended line, a distance of 14.44 feet to the true point of beginning. Containing 0.040 acre and to be held continuous and contiguous with Lot No. 120 recorded in Volume 70, page 357 of the Official Records of Athens County in the Athens County Recorder's Office.

Subject to all reservations, right-of-ways, leases and easements of record.

The basis for bearings in the above description was assuming a bearing of South 54 degrees 37 minutes 53 seconds East for the south line of Lot No. 120.

The above description was prepared from an actual survey of the premises made by Joseph C. Roman, Registered Surveyor No. s-6461, in October 2002.

Iron pin set in the above description is a 5/8 inch diameter rebar approximately 30 inches in length with an 1-1/4 inch diameter plastic identification cap.

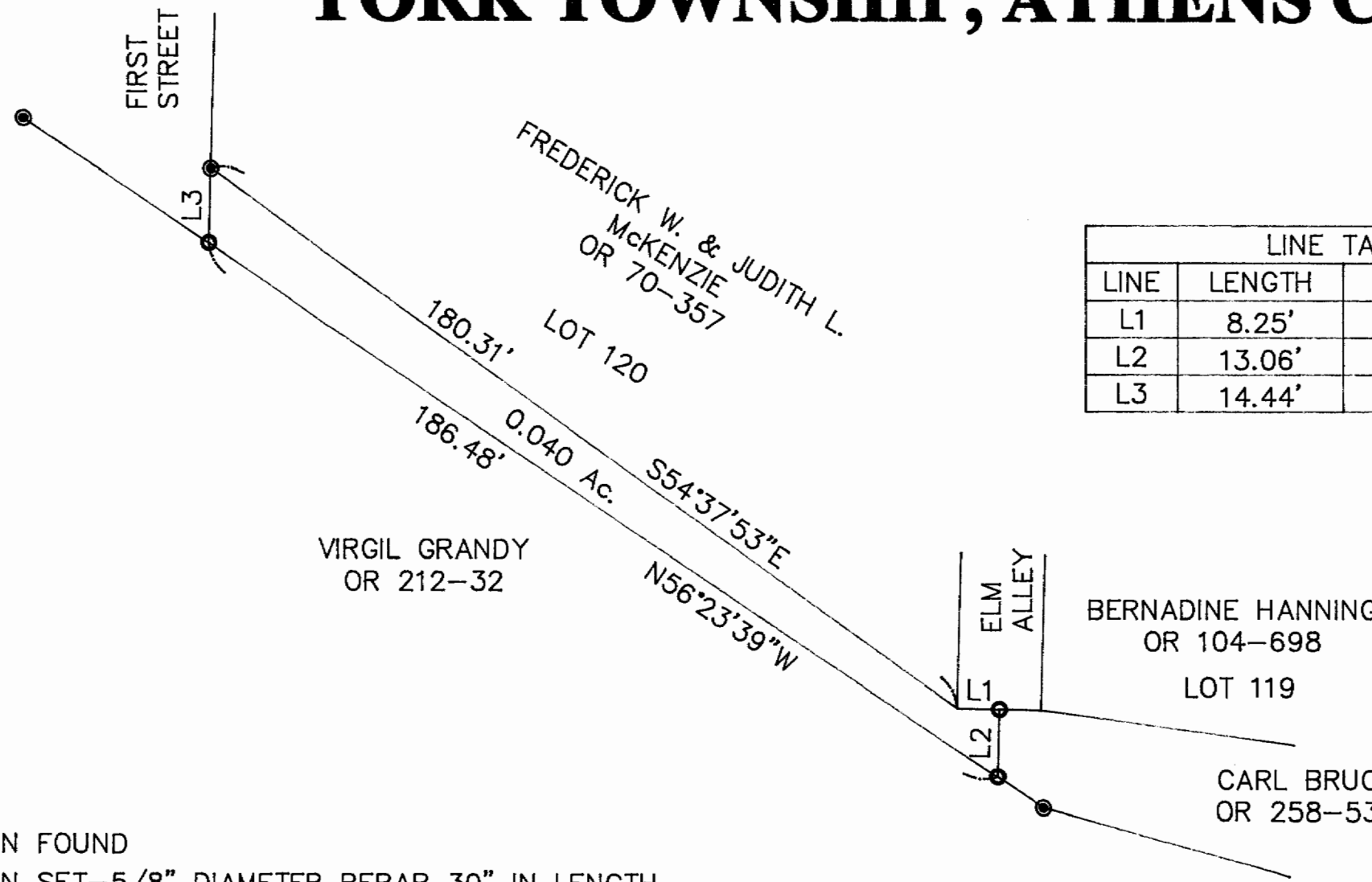
Description checked for
Mathematical Accuracy
ATHENS COUNTY
ENGINEERS OFFICE
BY: *S. Blause*
DATE: 12-2-02



35

YR 12/12

SURVEY PLAT OF 0.040 ACRES IN VILLAGE OF BUCHTEL SECTION 12, TOWNSHIP 12, RANGE 15 YORK TOWNSHIP, ATHENS COUNTY, OHIO



LINE TABLE		
LINE	LENGTH	BEARING
L1	8.25'	S88°26'13"E
L2	13.06'	S01°33'45"W
L3	14.44'	N01°33'38"E

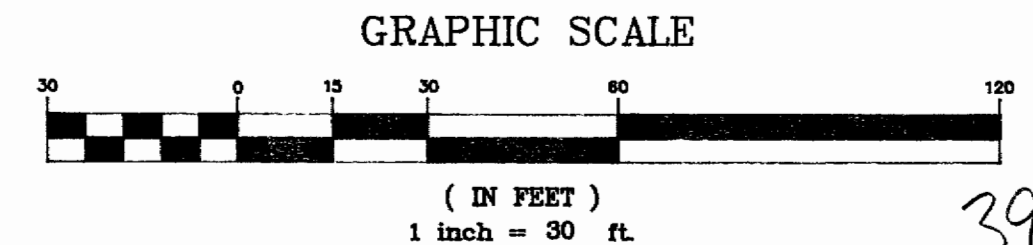
REFERENCES

- EXISTING DEEDS
- RECORDED PLATS
- TAX PLATS
- EXISTING MONUMENTS

Description checked for
Mathematical Accuracy
ATHENS COUNTY
ENGINEER'S OFFICE
BY: *S. Blause*
DATE: 12-2-02

BEARING BASIS

ASSUMED BEARING OF S 54° 37' 55" E FOR THE SOUTH LINE OF LOT 120.



LEGEND

- IRON PIN FOUND
- IRON PIN SET-5/8" DIAMETER REBAR 30" IN LENGTH WITH 1-1/4" DIAMETER PLASTIC IDENTIFICATION CAP STAMPED "JOSEPH ROMAN RS-6461.

I HEREBY CERTIFY THIS PLAT WAS PREPARED FROM AN ACTUAL SURVEY OF THE PREMISES MADE BY ME IN OCTOBER 2002.

Joseph C. Roman
JOSEPH C. ROMAN
380 ELIZABETH STREET
NELSONVILLE, OHIO 45764
PHONE 740-753-6461

38

39

