

DESCRIPTION 13.813 ACRES

Being situated in Sections 15 and 16, Township 12, Range 15, York Township, Athens County, Ohio and further described as follows:

Commencing at an iron pin found, marking the northeast corner of Section 15, thence, along the east line of Section 15, South 04 degrees 05 minutes 42 seconds West, passing through an iron pin found at 51.00 feet, a distance of 90.30 feet to a point in the center of State Route No. 691, said point being the true point of beginning; thence, continuing along said east line, South 04 degrees 05 minutes 42 seconds West, passing through an iron pin set at 28.31 feet, a distance of 863.22 feet to an iron rail found; thence, North 85 degrees 53 minutes 06 seconds West a distance of 660.09 feet to an iron rail found; thence, North 04 degrees 05 minutes 59 seconds East a distance of 951.68 feet to an iron rail found and being on the north line of Section 15; thence, along the north line of said section, South 86 degrees 02 minutes 42 seconds East a distance of 147.98 feet to a point, said point referenced by an iron pin found bearing North 15 degrees 02 minutes 13 seconds West 36.08 feet; thence, South 48 degrees 24 minutes 21 seconds East a distance of 211.74 feet to an iron pin found; thence, North 48 degrees 40 minutes 30 seconds East, passing through an iron pin found at 174.88 feet, a distance of 199.86 feet to a point in the center of State Route No. 691; thence, South 54 degrees 59 minutes 07 seconds East a distance of 15.64 feet; thence, South 59 degrees 30 minutes 31 seconds East a distance of 212.50 feet to the true point of beginning. Containing 13.813 acres of which 13.808 acres are in Section 15 and 0.005 acre in Section 16.

Subject to all legal right-of-ways, easements and leases of record. Also, subject to all exceptions of record.

LAST DEED REFERENCE: Volume 47, page 961 of the Official Records of Athens County in the Office of the Athens County Recorder.

All iron pins set in the above description are 5/8 inch diameter rebar with a 1-1/4 inch diameter plastic caps stamped "JOSEPH ROMAN RS-6461".

The bearings in the above description is based on assuming a bearing of South 04 degrees 05 minutes 42 seconds West for the east line of Section 15.

The above description was prepared from an actual survey of the premises made by Joseph C. Roman, Registered Surveyor No. s-6461, in April and May 2003.

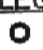



Joseph C. Roman

Vol # 15

Description checked for
Mathematical Accuracy
ATHENS COUNTY
ENGINEER'S OFFICE
BY: K. Canty
DATE: 5-14-03

SURVEY PLAT OF 13.813 ACRES SECTIONS 15 & 16, TOWNSHIP 12, RANGE 15 YORK TOWNSHIP, ATHENS COUNTY, OHIO

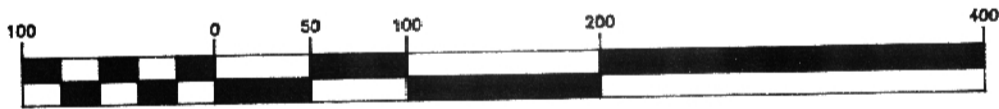
REFERENCES
Existing Deeds
Tax Plats
Survey Plats
Previous surveys

LEGEND
 Iron pin found
 Axle found
 Iron rail found
 Iron pin set - 5/8 inch diameter rebar approximately 30 inches in length with 1/4 inch diameter plastic identification cap stamped "Joseph C. Roman RS-6461."

BEARING BASIS
Assuming a bearing of S 04° 05' 42" W for the east line of Section 15.

USA
OR 275-614

GRAPHIC SCALE



(IN FEET)
1 inch = 100 ft.

Surveyed for Kevin McCulloch for purchase from Anthony Castenova.

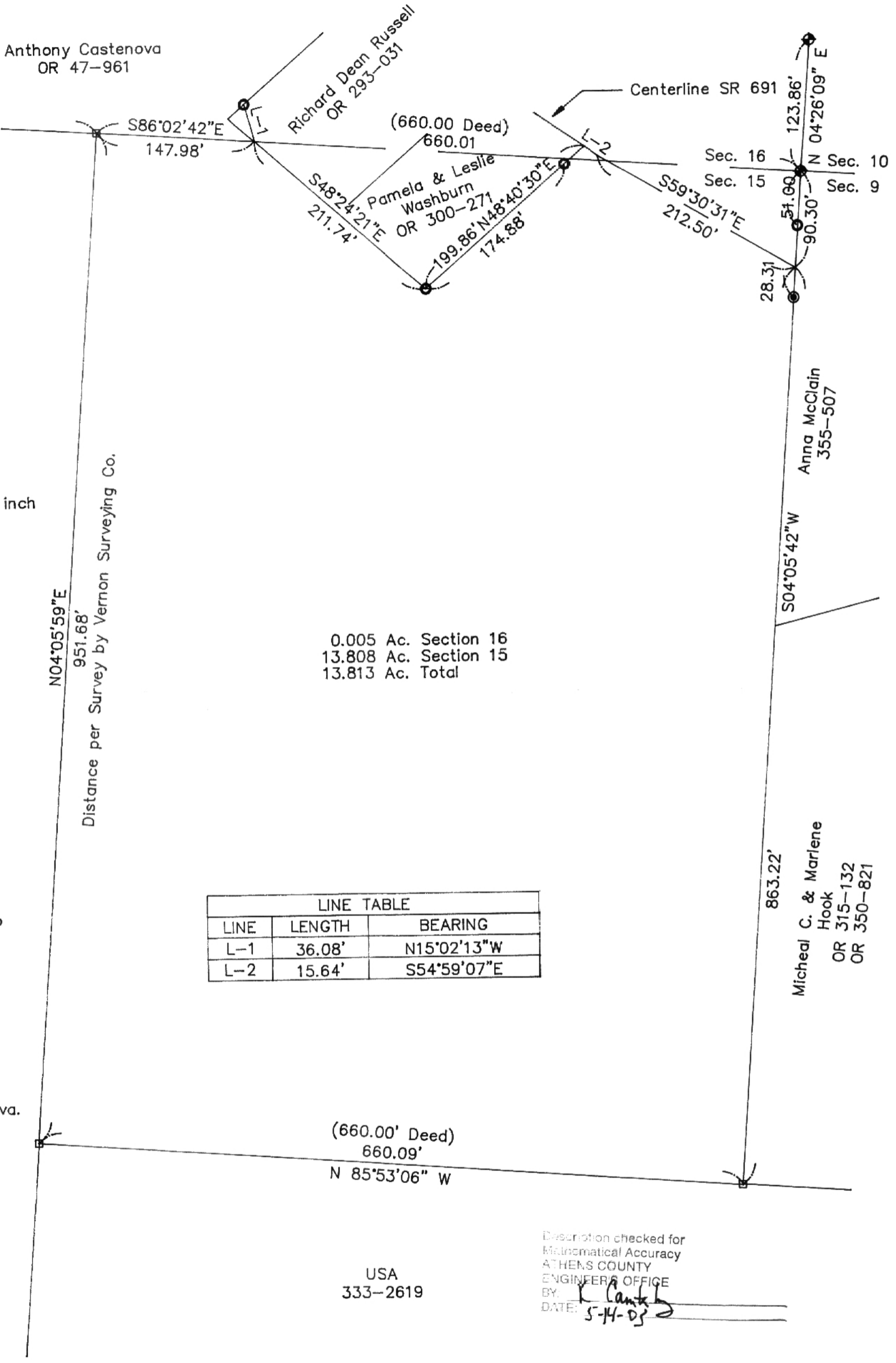
(660.00' Deed)
660.09'
N 85°53'06" W

USA
333-2619

Description checked for
Mathematical Accuracy
ATHENS COUNTY
ENGINEER'S OFFICE
BY: *J. Roman*
DATE: 5-14-03



ASSUMED



LINE TABLE		
LINE	LENGTH	BEARING
L-1	36.08'	N15°02'13"W
L-2	15.64'	S54°59'07"E

NOTES:
1) Distance shown on the west line is from a survey by Vernon Surveying Co. for the United States Forest Service.

I hereby certify this plat was prepared from an actual survey of the property made by me in April and May 2003.

Joseph C. Roman
Joseph C. Roman, RS No. 6461
380 Elizabeth Street
Nelsonville, Ohio 45764
740-753-2051