

BRANNER SURVEYING
MEMBER-PROFESSIONAL LAND SURVEYORS OF OHIO
12500 PEACH RIDGE ROAD
ATHENS, OHIO 45701

JOHN M. BRANNER
Registered Land Surveyor

TELEPHONE
(614) 592-5778

DESCRIPTION OF A 10.19 ACRES

Situated in Section 16,, T.12, R.15, York township, athens County, Ohio and being more particularly described as follows:

Commencing at the South-east corner of Section 16, thence, West 18 chains to a point; thence, North 83 Degrees 57 Minutes 32 Seconds West, 1419.44 feet to a point; thence, North 06 Degrees 02 Minutes 28 Seconds East, 170.85 feet to a point at the Southerly most corner of a 3.98 acre tract (Vol. 81, Page 137); thence, along the South-line of said tract, North 58 Degrees 06 Minutes East, 367.24 feet to an iron pin found, said pin being the point of beginning for the tract of land herein described:

Thence, continuing with the lines of the aforementioned 3.98 acre tract, North 52 Degrees 17 Minutes 09 Seconds East, 375.96 feet to an iron pin found; thence, North 75 Degrees 53 Minutes 44 Seconds West, 466.39 feet to a point in County Road #1; thence, with said road, North 45 Degrees 18 Minutes 22 Seconds East, 251.06 feet to a point; thence, North 46 Degrees 29 Minutes ~~44~~ Seconds East, 98.40 feet to a point; thence, North 60 Degrees 39 Minutes 40 Seconds East, 120.68 feet to a point; thence, North 82 Degrees 46 Minutes 19 Seconds East, 166.45 feet to a point; thence, North 89 Degrees 13 Minutes 10 Seconds East, 152.57 feet to a point in a concrete bridge; thence, North 89 Degrees 19 Minutes 25 Seconds East, 143.14 feet to a point; thence, leaving said road, South 01 Degrees 44 Minutes 03 Seconds West, 280.68 feet to an iron pin set, passing an iron pin set at 16.72 feet; thence, South 02 Degrees 36 Minutes 32 Seconds East, 240.52 feet to an iron pin set; thence, South 53 Degrees 59 Minutes 46 Seconds West, 768.54 feet to an iron pin at the South-east corner of a 15.04 acre tract; thence, along the East-line of said tract, North 07 Degrees 53 Minutes 06 Seconds West, 303.69 feet to the point of beginning and containing 10.19 acres.

Subject to all easements and rights of way of records.

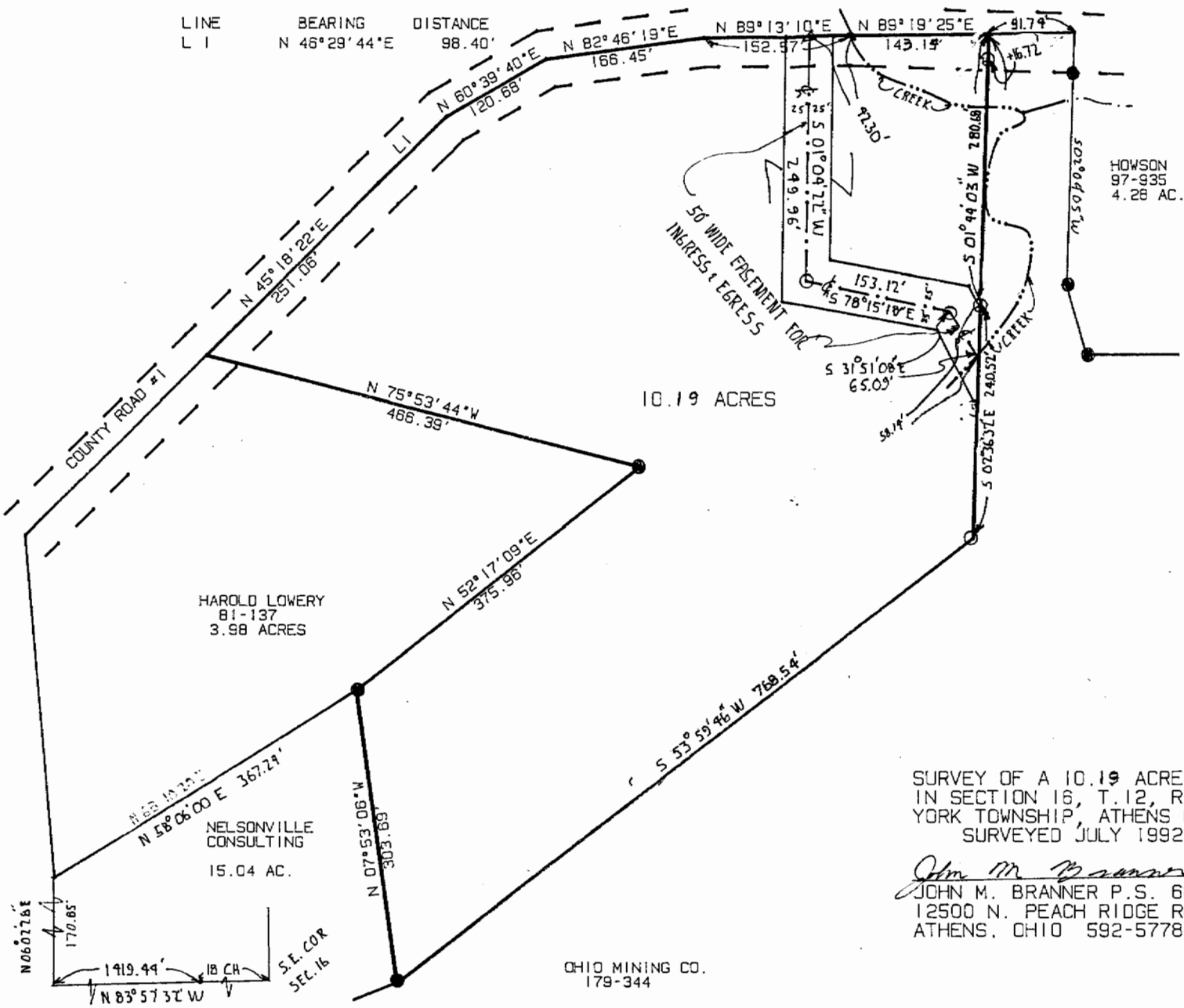
Description checked for
Mathematical Accuracy
ATHENS COUNTY
ENGINEER'S OFFICE
BY:
DATE:

R. J. Nelson
7-24-42

John M. Branner
John M. Branner P. S. 6805

YRK #16
45

LINE	BEARING	DISTANCE
L 1	N 46° 29' 44" E	98.40'



SCALE 1 INCH = 100 FEET

- = IRON PIN SET
- = IRON PIN FOUND
- △ = RES SET

SURVEY OF A 10.19 ACRE TRACT
 IN SECTION 16, T. 12, R. 15,
 YORK TOWNSHIP, ATHENS CO., O.
 SURVEYED JULY 1992

John M. Branner
 JOHN M. BRANNER P.S. 6805
 12500 N. PEACH RIDGE ROAD
 ATHENS, OHIO 592-5778