

REFERENCE LINES TO P.O.B.

LINE	BEARING	DISTANCE
L1	S 03°48'26" W	41.30'
L2	S 03°48'26" W	42.70'
L3	N 86°11'34" W	100.00'
L4	N 03°48'26" E	46.19'

LINES/CURVES FOR 0.739 ACRE TRACT

LINE	BEARING	DISTANCE
L5	N 59°30'17" E	71.79'
L6	N 42°18'02" W	62.68'
L7	S 03°57'25" W	5.57'

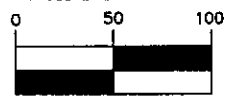
CURVE	RADIUS	LENGTH	CHORD BEARING	CHORD LENGTH
C1	549.00'	370.41'	S 85°57'30" W	363.42'
C2	2901.28'	143.30'	S 38°53'31" E	143.28'
C3	649.00'	199.45'	N 86°04'19" E	198.67'
C4	240.36'	72.21'	N 49°57'01" E	71.94'



BASIS OF BEARINGS:
STATE PLANE COORDINATE SYSTEM
OHIO SOUTH ZONE, NAD 83

- - IRON PIN FOUND
- - IRON PIN SET

GRAPHIC SCALE



(IN FEET)

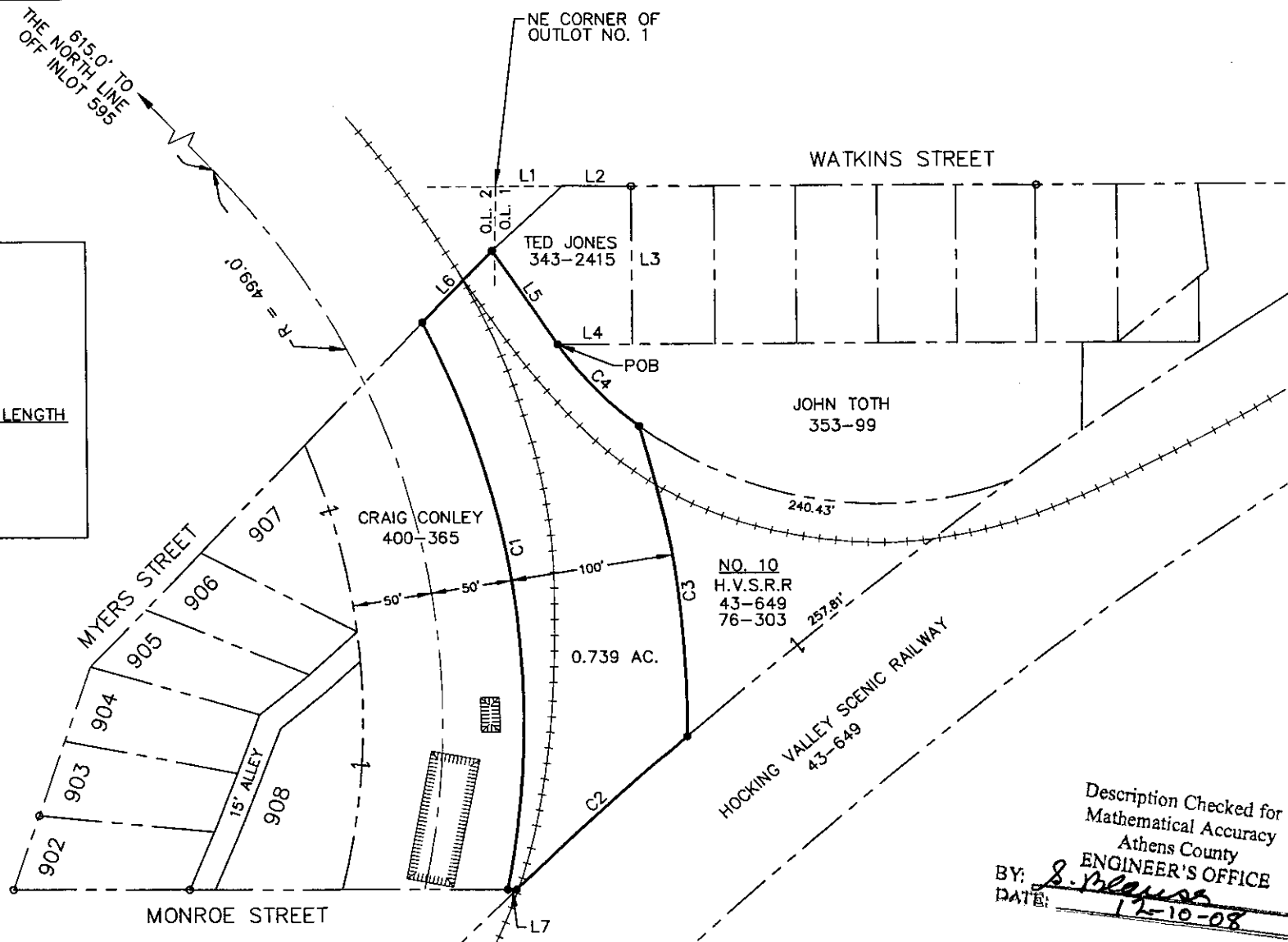
1 inch = 100 ft.

Rex Jeffrey Maiden

PREPARED BY R. JEFFREY MAIDEN, P.S. 7459
RJM ENGINEERING COMPANY, INC.
66 S. PLAINS RD
THE PLAINS, OHIO 45780



SURVEY OF A 0.739 ACRE TRACT
FOR HOCKING VALLEY SCENIC RAILWAY
IN SECTION 24, T12N, R15W, IN YORK
TOWNSHIP, ATHENS COUNTY, OHIO.
SEPTEMBER 26, 2007



Description Checked for
Mathematical Accuracy
Athens County
ENGINEER'S OFFICE
BY: *S. Klaus*
DATE: 11-10-08