

**DESCRIPTION OF 2.30 ACRES
SECTIONS 26 AND 32, TOWNSHIP 12, RANGE 15
YORK TOWNSHIP, ATHENS COUNTY**

Commencing at a railroad spike found at the intersection of east line of Section 32 and center of County Road No. 2, and being South 6 degrees 28 minutes 48 seconds West 938.55 feet of the northeast corner of Section 32, said spike also, being the true point of beginning; thence, along the center of said county road, South 47 degrees 46 minutes 14 seconds West a distance of 50.30 feet to a point; thence, South 44 degrees 57 minutes 22 seconds West a distance of 23.23 feet to a point; thence, leaving said county road, North 84 degrees 03 minutes 47 seconds West a distance of 67.39 feet to an iron pin found; thence, continuing North 84 degrees 03 minutes 47 seconds West a distance of 165.10 feet to an iron pin found; thence, North 04 degrees 09 minutes 09 seconds East, passing an iron pin set at 227.67 feet, a distance of 244.98 feet to a point in the center of Township Road No. 273; thence, along the center of said township road, South 80 degrees 50 minutes 43 seconds East a distance of 18.03 feet to a point; thence, South 80 degrees 06 minutes 35 seconds East a distance of 301.73 feet to a point; thence, South 83 degrees 00 minutes 21 seconds East a distance of 96.81 feet to a point; thence, North 71 degrees 18 minutes 12 seconds East a distance of 112.28 feet to a point; thence, North 65 degrees 31 minutes 58 seconds East a distance of 65.08 feet to a point; thence, North 72 degrees 12 minutes 15 seconds East a distance of 78.70 feet to a point; thence, South 89 degrees 29 minutes 20 seconds East a distance of 37.22 feet to a point; thence, South 63 degrees 34 minutes 03 seconds East a distance of 74.25 feet to a point, said point being the intersection of the centers of Township Road 273 and County Road 2; thence, along said county road, South 76 degrees 01 minutes 40 seconds West a distance of 57.80 feet to a point; thence, South 73 degrees 04 minutes 55 seconds West a distance of 89.15 feet to a point; thence, South 68 degrees 31 minutes 34 seconds West a distance of 96.23 feet to a point; thence, South 65 degrees 56 minutes 30 seconds West a distance of 132.84 feet to a point; thence, South 62 degrees 25 minutes 55 seconds West a distance of 110.57 feet to a point; thence, South 56 degrees 48 minutes 37 seconds West a distance of 45.33 feet to the true point of beginning. Containing 2.30 acres of which 0.79 of an acre in Section 26 and 1.51 acres in Section 32.

Subject to all legal right-of-ways, easements and leases of record.

LAST DEED REFERENCE: Volume 127, page 629 of the Deed Records of Athens County in the Office of the Athens County Recorder.

All iron pins set in the above description are 5/8 inch diameter rebar with a 1-1/4 inch diameter plastic caps stamped "JOSEPH ROMAN RS-6461".

The bearings in the above description is based on assuming a bearing of South 06 degrees 28 minutes 48 seconds West for the east

Description checked for
Mathematical Accuracy
ATHENS COUNTY
ENGINEERS OFFICE

S. Blausen

7-27-00

000118

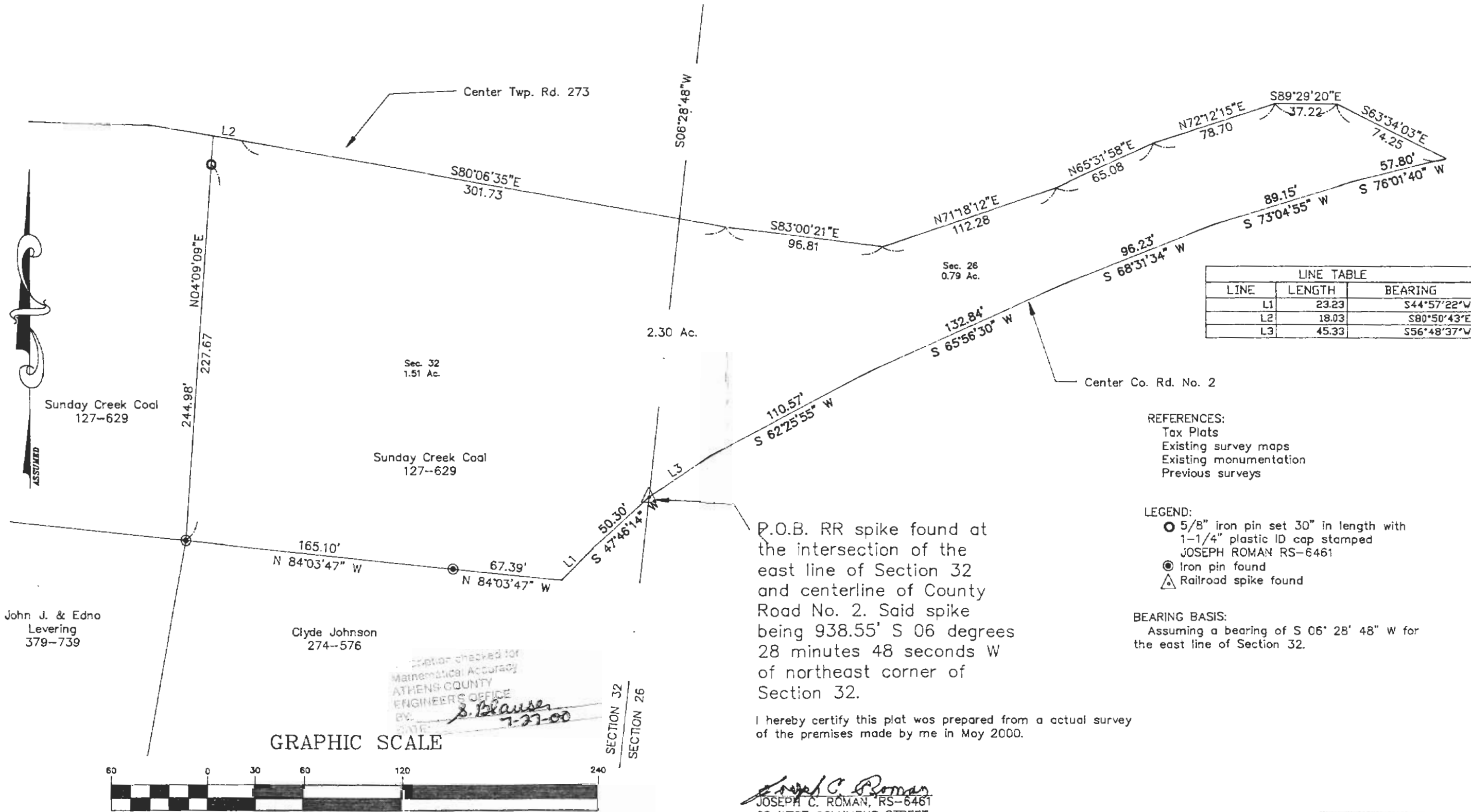
YRK # 26

line of Section 32.

The above description was prepared from an actual survey of the premises made by Joseph C. Roman, Registered Surveyor No. s-6461, in May 2000.

000119

PLAT OF 2.30 ACRE TRACT
 SECTIONS 26 & 32, TOWNSHIP 12, RANGE 15
 YORK TOWNSHIP, ATHENS COUNTY, OHIO



REFERENCES:
 Tax Plats
 Existing survey maps
 Existing monumentation
 Previous surveys

LEGEND:
 ○ 5/8" iron pin set 30" in length with 1-1/4" plastic ID cap stamped JOSEPH ROMAN RS-6461
 ● Iron pin found
 ▲ Railroad spike found

BEARING BASIS:
 Assuming a bearing of S 06° 28' 48" W for the east line of Section 32.

P.O.B. RR spike found at the intersection of the east line of Section 32 and centerline of County Road No. 2. Said spike being 938.55' S 06 degrees 28 minutes 48 seconds W of northeast corner of Section 32.

I hereby certify this plat was prepared from a actual survey of the premises made by me in May 2000.

Plat checked for Mathematical Accuracy
 ATHENS COUNTY ENGINEER'S OFFICE
 BY: *S. Blause*
 DATE: 7-27-00

Joseph C. Roman
 JOSEPH C. ROMAN, RS-6461
 68 WEST COLUMBUS STREET
 NELSONVILLE, OHIO 45764
 PHONE # 740-753-2697

GRAPHIC SCALE



(IN FEET)
 1 inch = 60 ft.

000122

000123