

BRANNER SURVEYING

MEMBER-PROFESSIONAL LAND SURVEYORS OF OHIO

12500 N. PEACH RIDGE ROAD
ATHENS, OHIO 45701

JOHN M. BRANNER
Registered Land Surveyor

TELEPHONE
(740) 592-5778

DESCRIPTION OF A 52.49 ACRE TRACT

Situated in Section 26, Town 12, Range 15, York Township, Athens County, Ohio, and being tracts belonging to The Ohio Mining Company and described in Volume 183 Page 409, Volume 213 Page 576 and Volume 188 Page 57, Athens County Deed Records and being more particularly described as follows:

Commencing at the Northwest corner of the Southeast Quarter of Section 26;

thence South 3 degrees 50 minutes 20 seconds West, a distance of 760.67 feet to a point at the Northwest corner of a 12.050 acre tract, said point being the POINT OF BEGINNING of the following described tract;

thence, following said tract, South 3 degrees 50 minutes 28 seconds West, a distance of 302.29 feet to a point;

thence North 85 degrees 59 minutes 58 seconds East, a distance of 1672.49 feet to a point;

thence South 85 degrees 36 minutes 18 seconds East, a distance of 1057.61 feet to a point in the East line of said Section 26;

thence, leaving said 12.050 acre tract and following the East line of said Section, South 4 degrees 31 minutes 56 seconds West, a distance of 538.15 feet to a point at the Northeast corner of a 82.71 acre tract described in Volume 183 Page 409 Athens County Deed Records;

thence, leaving said Section line and following said tract, North 85 degrees 52 minutes 00 seconds West, a distance of 2680.80 feet to a point;

thence South 4 degrees 46 minutes 49 seconds West, a distance of 248.45 feet to a point at the Northeast corner of a 5.04 acre tract described in Volume 280 Page 1251 Official records of Athens County;

thence, leaving said 82.71 acre tract and following said 5.04 acre tract, South 46 degrees 52 minutes 43 seconds West, a distance of 793.12 feet to a point in Township road 270;

thence, leaving said 5.04 acre tract and following said Road, North 20 degrees 32 minutes 53 seconds West, a distance of 59.87 feet to a point;

thence North 18 degrees 06 minutes 56 seconds West, a distance of 127.00 feet to a point;

thence North 11 degrees 46 minutes 56 seconds West, a distance of 140.30 feet to a point;

thence North 8 degrees 52 minutes 08 seconds East, a distance of 109.80 feet to a point;

thence North 19 degrees 51 minutes 15 seconds East, a distance of 91.00 feet to a point;

thence North 23 degrees 25 minutes 49 seconds East, a distance of 161.18 feet to a point;

thence North 22 degrees 16 minutes 28 seconds East, a distance of 43.21 feet to a point;

thence North 0 degrees 34 minutes 21 seconds East, a distance of 49.92 feet to a point;

thence North 23 degrees 33 minutes 42 seconds West, a distance of 44.94 feet to a point;

thence North 41 degrees 43 minutes 46 seconds West, a distance of 76.58 feet to a point;

thence North 66 degrees 18 minutes 34 seconds West, a distance of 338.83 feet to a point;

thence North 46 degrees 40 minutes 07 seconds West, a distance of 109.48 feet to a point;

thence North 18 degrees 47 minutes 48 seconds West, a distance of 107.04 feet to a point;

thence North 13 degrees 23 minutes 05 seconds East, a distance of 149.00 feet to a point;

thence North 38 degrees 11 minutes 11 seconds East, a distance of 627.11 feet to a point;

thence North 74 degrees 03 minutes 49 seconds East, a distance of 147.29 feet to a point at the Northwest corner of a 5.33 acre tract described in Volume 188 Page 271 Athens County Deed Records;

thence, leaving said Road and following said tract, South 4 degrees 20 minutes 53 seconds West, a distance of 396.89 feet to a point;

thence South 85 degrees 39 minutes 07 seconds East, a distance of 534.80 feet to the POINT OF

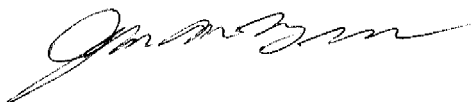
BEGINNING; said described tract containing 52.49 acres more or less, 7.85 acres being out of the

aforementioned Volume 213 Page 576, 18.92 acres being out of the aforementioned Volume 188 Page 57 and

25.72 acres being out of the aforementioned Volume 183 Page 409.

Subject to all easements and right-of-way of record.

The above description is based on Deeds and previous field Surveys done by different Surveyors June 30, 2000 By John M. Branner P.S. 6805 12500 N. Peach Ridge Road, Athens Ohio 45701 (740) 592-5778



Inspection checked for
Mathematical Accuracy
ATHENS COUNTY
ENGINEER'S OFFICE

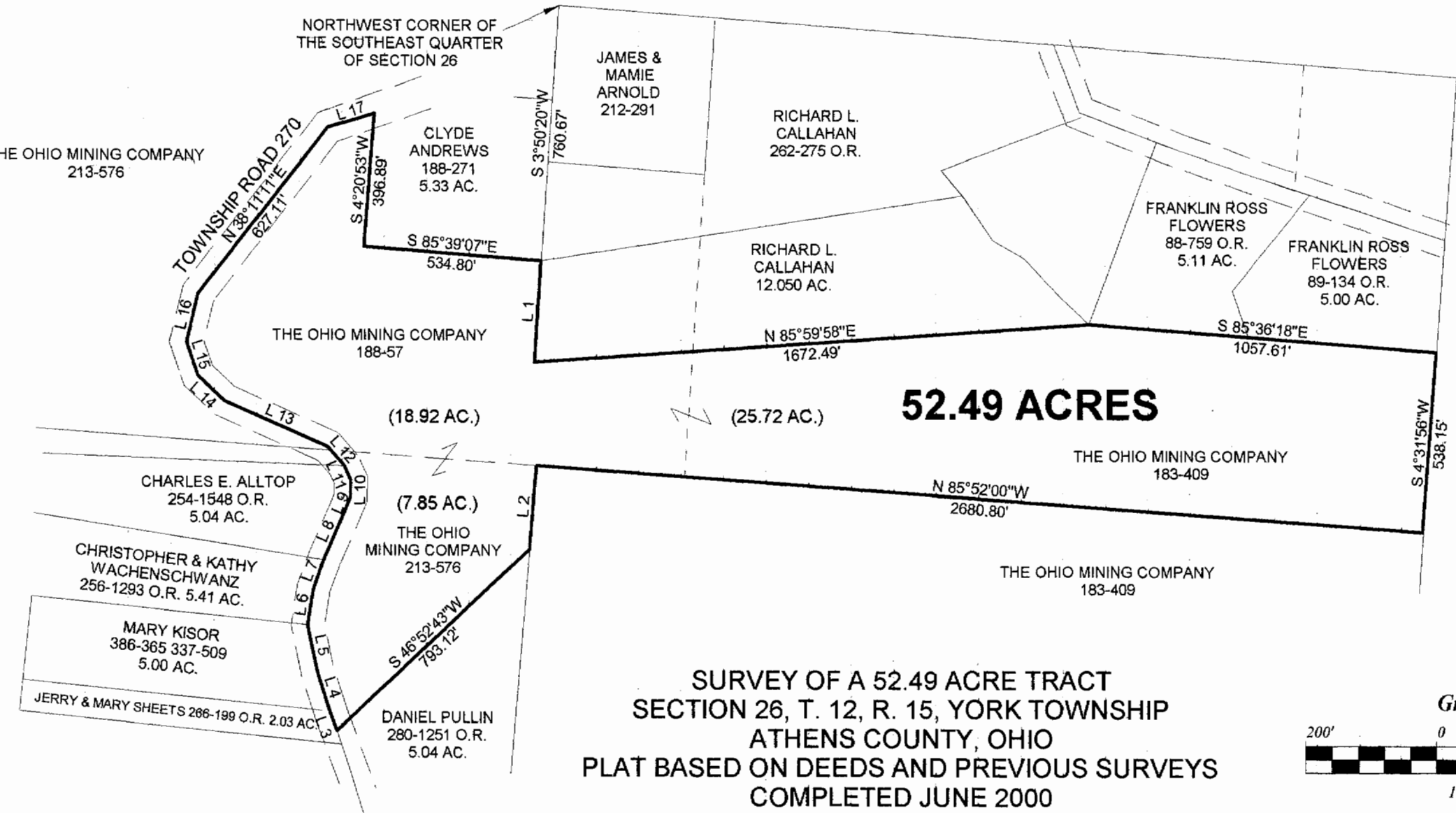
S. Blausen

7-7-2000

000070

YRK # 26

000073



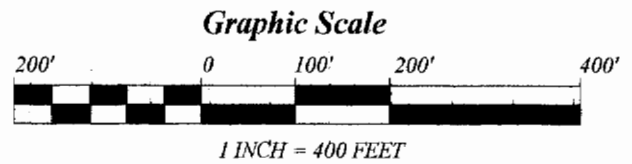
Line	Bearing	Distance
1	S 3°50'28"W	302.29'
2	S 4°46'49"W	248.45'
3	N 20°32'53"W	59.87'
4	N 18°06'56"W	127.00'
5	N 11°46'56"W	140.30'
6	N 8°52'08"E	109.80'
7	N 19°51'15"E	91.00'
8	N 23°25'49"E	161.18'
9	N 22°16'28"E	43.21'
10	N 0°34'21"E	49.92'
11	N 23°33'42"W	44.94'
12	N 41°43'46"W	76.58'
13	N 66°18'34"W	338.83'
14	N 46°40'07"W	109.48'
15	N 18°47'48"W	107.04'
16	N 13°23'05"E	149.00'
17	N 74°03'49"E	147.29'

52.49 ACRES

**SURVEY OF A 52.49 ACRE TRACT
SECTION 26, T. 12, R. 15, YORK TOWNSHIP
ATHENS COUNTY, OHIO
PLAT BASED ON DEEDS AND PREVIOUS SURVEYS
COMPLETED JUNE 2000**

BY: *John M. Branner*
**JOHN M. BRANNER P.S. 6805
 12500 N. PEACH RIDGE ROAD
 ATHENS, OHIO 45701
 (740) 592-5778**

BEARINGS ARE BASED ON
 PREVIOUS SURVEYS AND ARE
 USED TO DENOTE ANGLES ONLY



Checked for
 accuracy
 S. Blause
 7-7-2000