

Being a part of 100 acre River Lot 618, Section 3, T12, R15, York Township in Athens County, State of Ohio and further described as:

Beginning at a point in the center of Monday Creek, said point bearing N 86° 30' 00" W, 4909.17', from the South East corner of River Lot 618, along South line of said River Lot, and further referenced by a found pin bearing N 86° 30' 00" W, 50.10' from said center point of Monday Creek.

Thence continuing along the centerline of Monday Creek the following courses,
N 60° 08' 32" E, 122.48' to a point,
N 43° 43' 33" E, 109.93' to a point,
N 31° 42' 43" E, 192.98' to a point,
N 30° 02' 30" E, 198.26' to a point.

Thence, continuing along centerline of Monday Creek, N 20° 50' 31" E, 255.36' to a point intersecting the centerline of Monday Creek and the centerline of York Township Road 36.

Thence with the centerline of York Township Road 36, the following courses:

S 27° 50' 50" E, 74.51' to a point,
S 27° 21' 19" E, 58.47' to a point,
S 25° 02' 38" E, 60.97' to a point,
S 21° 19' 19" E, 63.08' to a point,
S 17° 06' 29" E, 60.08' to a point,
S 12° 44' 01" E, 56.88' to a point,
S 8° 53' 21" E, 55.88' to a point,
S 6° 57' 10" E, 12.78' to a point,
S 5° 07' 45" E, 35.86' to a point,
S 2° 22' 03" E, 39.51' to a point,
S 00° 45' 23" W, 55.42' to a point,
S 5° 11' 54" W, 63.77' to a point,
S 9° 27' 10" W, 43.92' to a point,
S 11° 55' 24" W, 42.46' to a point,
S 15° 36' 25" W, 51.96' to a point,
S 18° 17' 58" W, 9.80' to a point in the centerline of York Township Road 36, intersecting the South line of River Lot 618, from whence a post on the lands of the U.S. Government, bears S 86° 30' 00" E, 44.85'.

Description checked for
Mathematical Accuracy
ATHENS COUNTY
ENGINEER'S OFFICE
BY: S. Blausen
DATE: 3-4-02

Thence along said South line of River Lot 618, N 86° 30' 00" W, ^{590.46} ~~50.10~~, to the place of beginning, containing 5.05 acres, more or less.

[Handwritten Signature]
3/01/02
86
-1912# 3

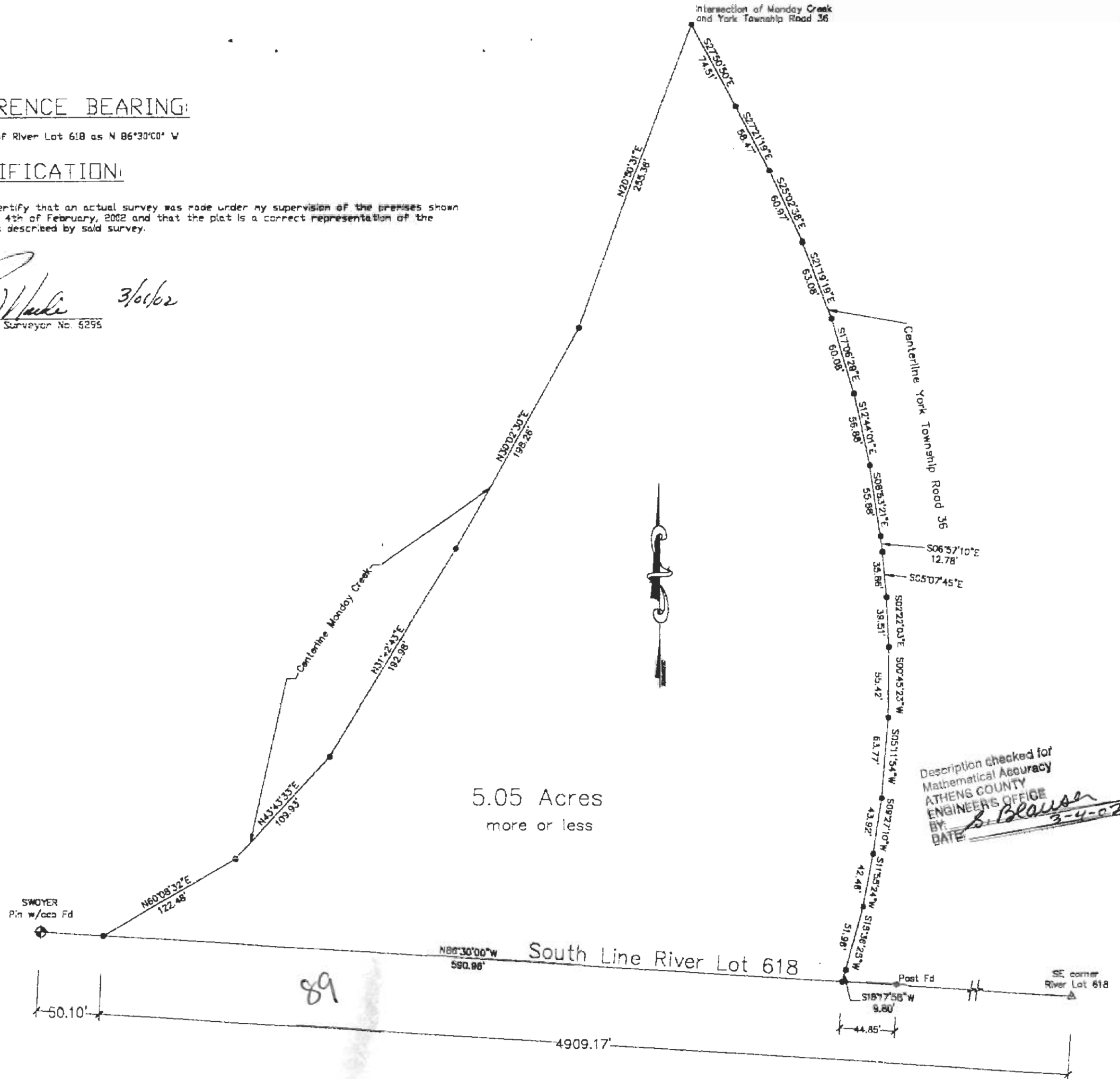
REFERENCE BEARING:

South line of River Lot 618 as N 86°30'00" W

CERTIFICATION:

I hereby certify that an actual survey was made under my supervision of the premises shown hereon the 4th of February, 2002 and that the plat is a correct representation of the premises as described by said survey.

[Signature] 3/6/02
Registered Surveyor No. 6295



5.05 Acres
more or less

Description checked for
Mathematical Accuracy
ATHENS COUNTY
ENGINEERS OFFICE
BY: *S. Blawie*
DATE: 3-4-02