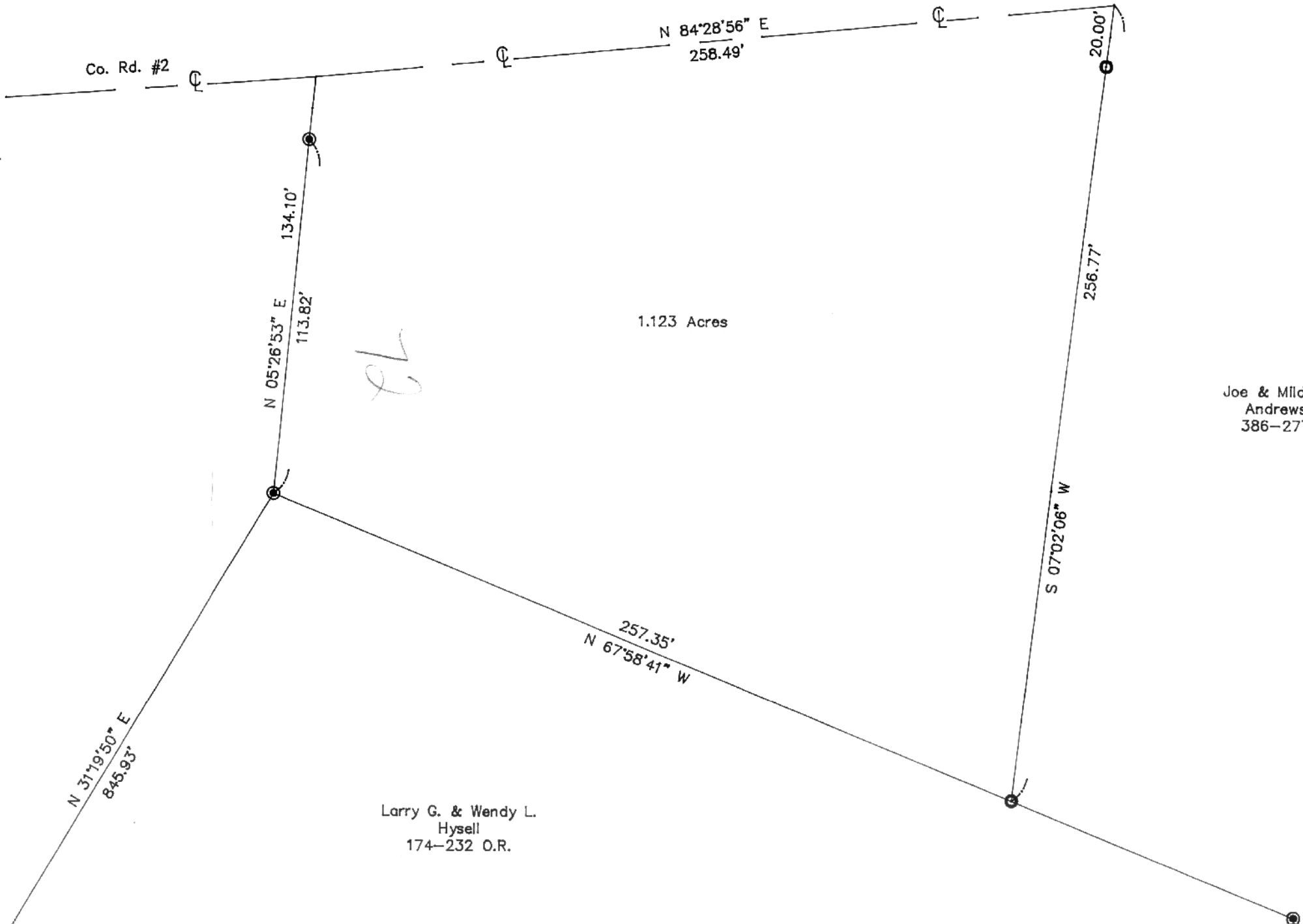
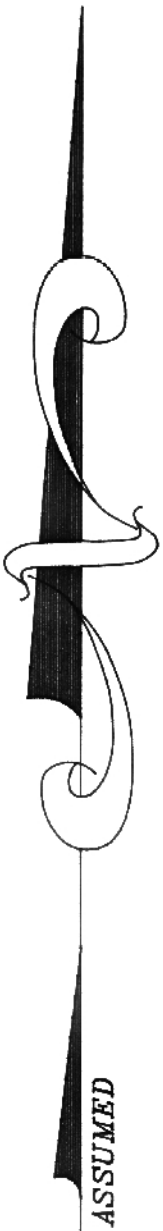


PLAT OF SURVEY OF 1.123 ACRES
SECTION THIRTY-TWO (32), TOWNSHIP TWELVE (12), RANGE FIFTEEN (15)
YORK TOWNSHIP, ATHENS COUNTY, OHIO

73



Joe & Mildred
Andrews
386-277

Larry G. & Wendy L.
Hysell
174-232 O.R.

REFERENCES:
Tax plats
Deeds
Survey plats

● Iron pin found
○ Iron pin set 5/8 inch diameter rebar approximately 30 inches in length with an 1 1/4 inch diameter plastic identification cap.

BEARING BASIS:
Assuming a bearing of S 5° 43' 07" W for the west line of Section 32.

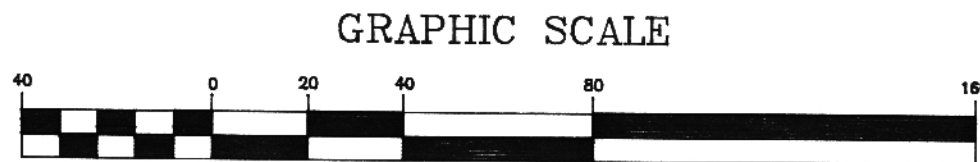
I hereby certify this plat was prepared from an actual survey of the premises made by me in August 1996.

P.O.B. being S 5° 43' 07" W 2,780.54' and S 84° 24' 17" E 4,044.98' from the northwest corner of Section 32.

75

Joseph C. Roman
Joseph C. Roman, Registered Surveyor No. s-6461
380 ELIZABETH ST.
NELSONVILLE, OHIO 45764 753-2051

Description checked for
Mathematical Accuracy
ATHENS COUNTY
ENGINEER'S OFFICE
BY: *S. Blause*
DATE: *8-22-96*



(IN FEET)
1 inch = 40 ft.