

SURVEY DESCRIPTION OF A 5.001 ACRE TRACT ON TOWNSHIP ROAD 275

Situated in York Township, Athens County, Ohio; being part of Fractional Lot 32 of Section 33, Township 12, Range 15; and being more particularly described as follows:

Commencing for reference at a wood post found at a point taken to be the Southwest corner of Section 33; thence with the South line of Section 33 South 89 degrees 12 minutes 09 seconds East a distance of 3782.27 feet to a 5/8" iron pin previously set; thence leaving the South line of Section 33 North 0 degrees 12 minutes 09 seconds West a distance of 1043.09 feet to a 5/8" iron pin previously set; thence North 44 degrees 56 minutes 10 seconds West a distance of 2349.05 feet to a 5/8" iron pin previously set and being the point of **Beginning** of the tract of land to be described;

thence North 42 degrees 23 minutes 31 seconds West a distance of 267.31 feet to a 5/8" iron pin previously set;

thence North 34 degrees 23 minutes 11 seconds West a distance of 125.87 feet to a 5/8" iron pin previously set;

thence North 4 degrees 24 minutes 32 seconds East a distance of 204.99 feet to a 5/8" iron pin previously set;

thence North 42 degrees 24 minutes 35 seconds West a distance of 58.92 feet to a 5/8" iron pin previously set;

thence South 67 degrees 18 minutes 59 seconds West a distance of 222.42 feet to a 5/8" iron pin previously set;

thence South 76 degrees 13 minutes 01 second West a distance of 182.53 feet to a 5/8" iron pin previously set;

thence North 65 degrees 48 minutes 31 seconds West a distance of 75.42 feet to a 5/8" iron pin previously set;

thence North 78 degrees 50 minutes 11 seconds West a distance of 113.74 feet to a 5/8" iron pin previously set;

thence North 10 degrees 41 minutes 00 seconds West a distance of 13.99 feet to a 5/8" iron pin previously set in the center of Township Road 275;

thence with the center of Township Road 275 the following seven bearings and distances:

1) North 74 degrees 31 minutes 19 seconds East a distance of 28.97 feet to a 5/8" iron pin previously set;

2) North 82 degrees 48 minutes 14 seconds East a distance of 116.64 feet to a 5/8" iron pin previously set;

3) North 72 degrees 04 minutes 31 seconds East a distance of 72.84 feet to a 5/8" iron pin previously set;

4) North 53 degrees 10 minutes 38 seconds East a distance of 68.85 feet to a 5/8" iron pin previously set;

5) North 45 degrees 05 minutes 17 seconds East a distance of 140.21 feet to a 5/8" iron pin previously set;

6) North 45 degrees 10 minutes 47 seconds East a distance of 111.19 feet to a 5/8" iron pin previously set;

7) North 36 degrees 18 minutes 30 seconds East a distance of 100.00 feet to a 5/8" iron pin set; thence leaving the surface of Township Road 275 South 36 degrees 38 minutes 26 seconds East a distance of 801.26 feet to a 5/8" iron pin set, passing 5/8" iron pins set at distances of 25.00 feet, 307.61 feet, and 550.43 feet;

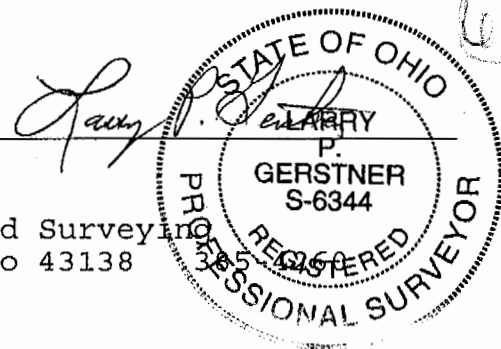
thence South 37 degrees 17 minutes 00 seconds West a distance of 235.85 feet to the point of beginning, containing 5.001 acres more or less, and subject to the public easement of Township Road 275 and any other public or private easements of record.

The above 5.001 acre survey is intended to describe part of the tracts as deeded to Larry P. Gerstner, deed references Volume OR256, Page 679, and Volume OR257, Page 753, both of the Athens County Recorder's Office. This survey was based upon information obtained from tax maps, deed descriptions, previous surveys, existing monumentation, existing fence lines, and existing public roads. The reference bearing for this survey is the West line of the South half of Section 33 as North 0 degrees 00 minutes 00 seconds West. Bearings are based upon an assumed meridian and are to denote angles only. All iron pins set by this survey or previously set are 5/8" by 30" (15" in roadway) and are capped by a 1-1/4" plastic identification cap stamped LPG-6344. The above described property was surveyed by Larry P. Gerstner, Ohio Registered Surveyor No. 6344, on December 8, 1997.

Description checked for
Mathematical Accuracy
ATHENS COUNTY
ENGINEER'S OFFICE
BY: S. Blause
DATE: 12-10-97

Survey by:

Larry P. Gerstner - Engineering and Surveying
9 East Second Street, Suite A, Logan, Ohio 43138



YR # 33

PLAT OF A 5.001 ACRE TRACT ON TOWNSHIP ROAD 275

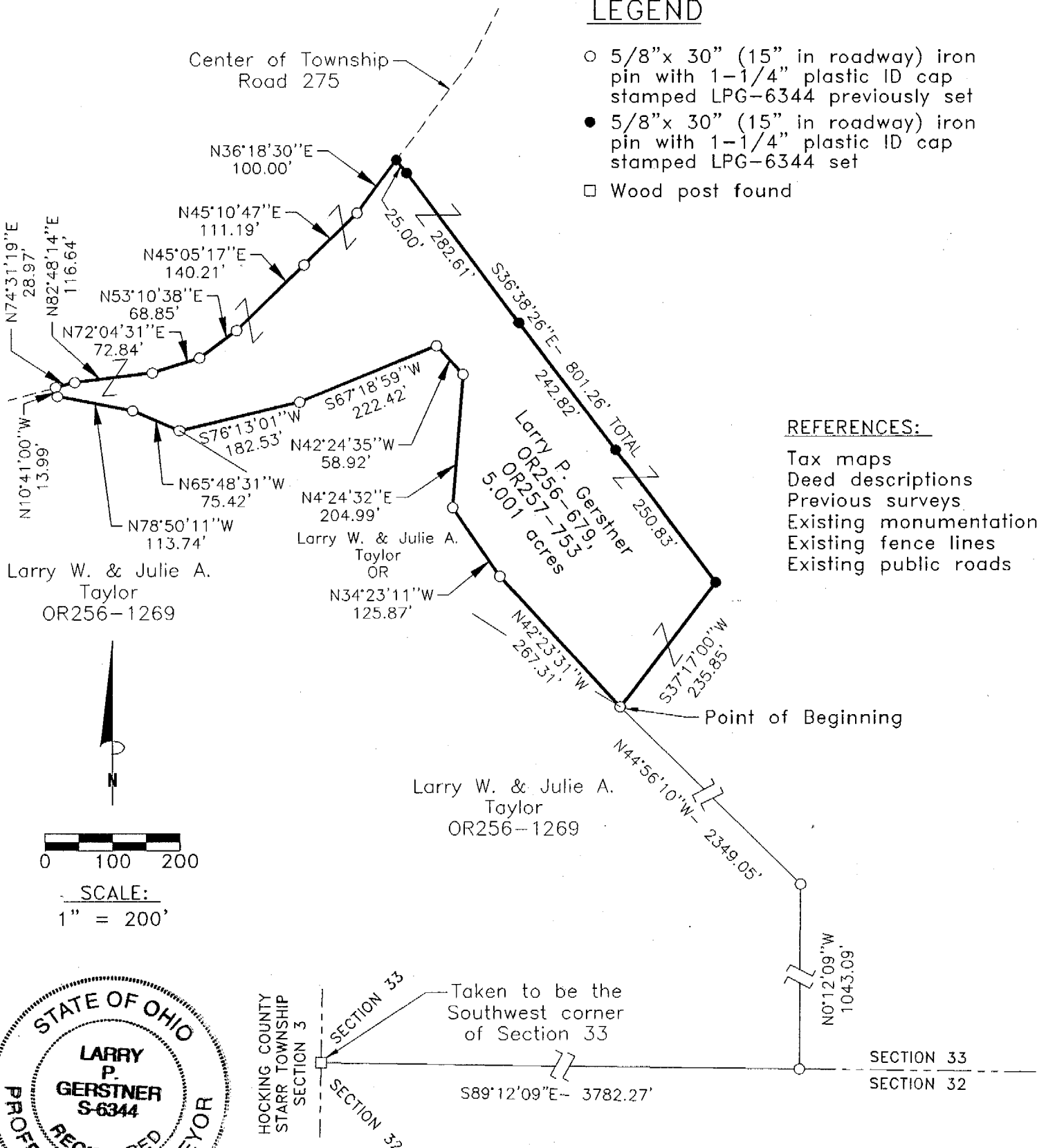
Situated in York Township, Athens County, Ohio; being part of Fractional Lot 32 of Section 33, Township 12, Range 15.

LEGEND

- 5/8" x 30" (15" in roadway) iron pin with 1-1/4" plastic ID cap stamped LPG-6344 previously set
- 5/8" x 30" (15" in roadway) iron pin with 1-1/4" plastic ID cap stamped LPG-6344 set
- Wood post found

REFERENCES:

- Tax maps
- Deed descriptions
- Previous surveys
- Existing monumentation
- Existing fence lines
- Existing public roads



Description checked for
 Mathematical Accuracy
 ATHENS COUNTY
 ENGINEER'S OFFICE
 BY: S. Blausen
 DATE: 12-16-97

REFERENCE BEARING:

The West line of the South half of Section 33 as North 0 degrees 00 minutes 00 seconds West. Bearings are based upon an assumed meridian and are to denote angles only.

CERTIFICATION:

I hereby certify that an actual survey was made under my supervision of the premises shown hereon on the 8th day of December, 1997 and that the plat is a correct representation of the premises as described by said survey.

Survey by: Larry P. Gerstner - Engineering and Surveying
 9 East Second Street, Suite A, Logan, Ohio 43138
 (614) 385-4260

Larry P. Gerstner
 Registered Surveyor No. 6344

64