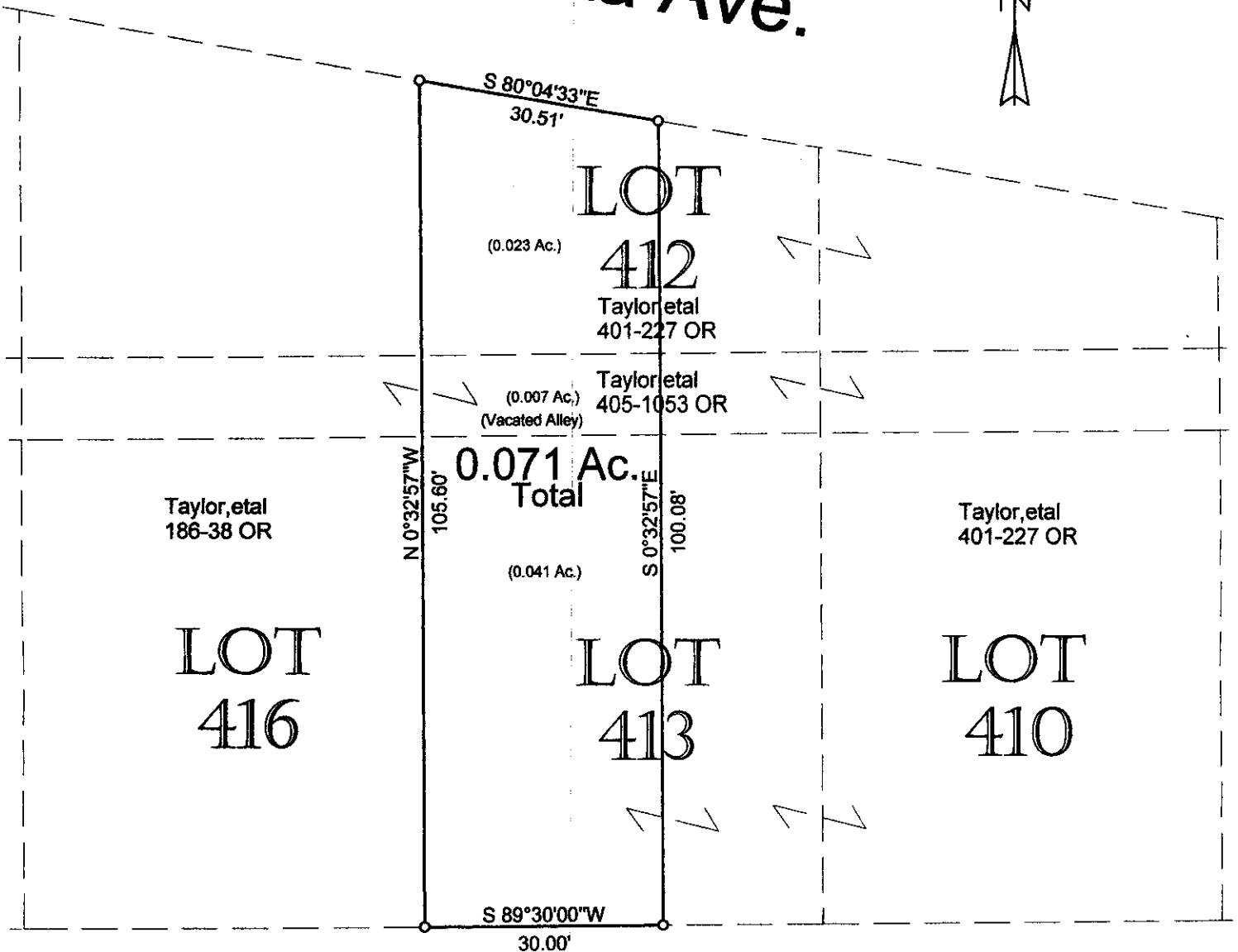
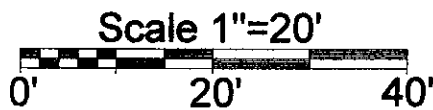


# Marietta Ave.



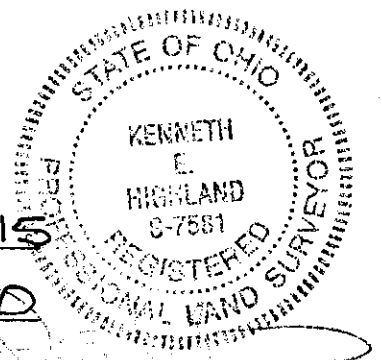
# Euclid Ave.



○ = Iron Pin Set

Description Checked for  
Mathematical Accuracy  
Athens County  
ENGINEER'S OFFICE  
BY: S. Blause  
DATE: 6-1-07

PLAT OF SURVEY OF A 0.071 Ac. TRACT  
 SURVEYED FOR KATHLEEN TAYLOR  
 SUBDIVISION HOCKING COAL → IRON ADDN  
 TOWNSHIP YORK SECTION 6 TOWN 12 RANGE 15  
 CORPORATION BUCITEL COUNTY ATHENS STATE OHIO  
 SCALE 1"= 20' DATE MAY, 2007



Kenneth E. Highland  
80 Fayette St.  
Nelsonville, Ohio 45764  
740-753-1264

Kenneth E. Highland S-7581