

BRANNER SURVEYING
MEMBER-PROFESSIONAL LAND SURVEYORS OF OHIO

12500 PEACH RIDGE ROAD
ATHENS, OHIO 45701

JOHN M. BRANNER
Registered Land Surveyor

TELEPHONE
(614) 592-5778

DESCRIPTION OF A 15.926 ACRE TRACT

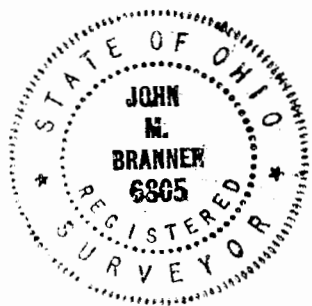
Being a part of the North-east Quarter of Section 7, Town 12, Range 15 and more particularly described as follows:

Beginning at an iron pin at the Northwest corner of the Northeast Quarter of Section 7; thence, South 86 Degrees 39 Minutes 22 Seconds East, along the section line 594.66 feet to a point in the center-line of State Route 691, passing an iron pin at 564.66 feet; thence, along the centerline of the State Route the following courses: South 39 Degrees 35 Minutes East, 102.15 feet to a point; South 48 Degrees 31 Minutes 30 Seconds East, 133.20 feet to a point; South 44 Degrees 32 Minutes East, 88.73 feet to a point; thence, South 38 Degrees 34 Minutes East, 207.84 feet; thence, South 55 Degrees 09 Minutes West, 416.88 feet to an iron pin. passing an iron pin at 25.03 feet ; thence, South 33 Degrees 54 Minutes East, 147.29 feet to an iron pin; thence, South 71 Degrees 13 Minutes West, 794.71 feet to an iron pin in the West-line of the Quarter Section ; thence, North 03 Degrees 24 Minutes East, 1045.59 feet to the point of beginning and containing 15.926 acres.

Subject to all easements and rights of way of record

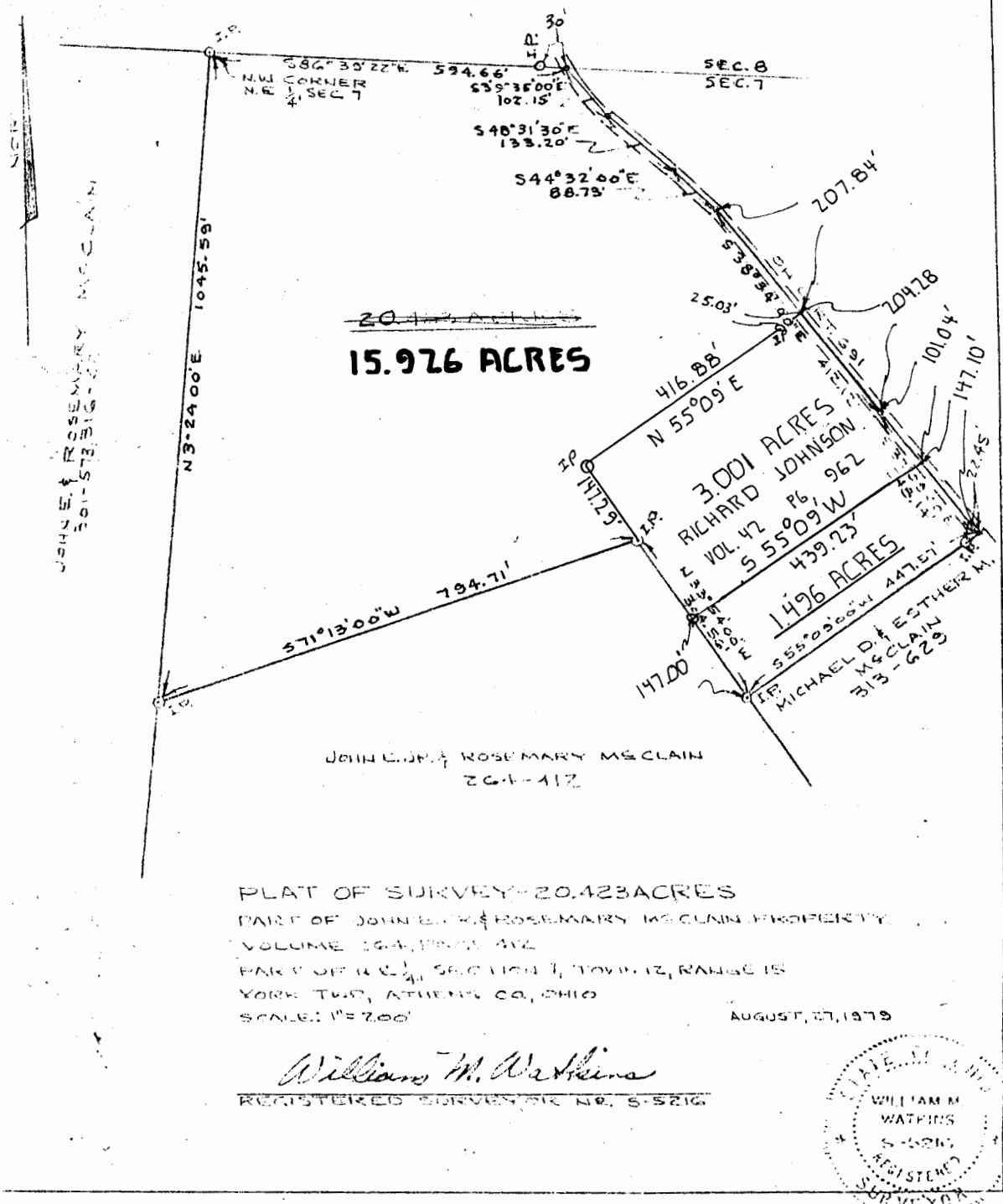
The above description is based on a field survey by William M. Watkins P.S. 5216. in August 27, 1979 and a description of a 3.001 acre tract as recorded in Vol. 42, Page 962 Athens Official Records.

John M. Branner
John M. Branner P.S. 6805



Description checked for
Mathematical Accuracy
ATHENS COUNTY
ENGINEER'S OFFICE
BY: *Cheryl Hedges*
DATE: *1/18/91*

18 York #7



REVISED JAN 1991
 TO DESCRIBE 15.926 ACRE TRACT

DESCRIPTION PREPARED BY

John M. Branner
 JOHN M. BRANNER P.S. 6805

