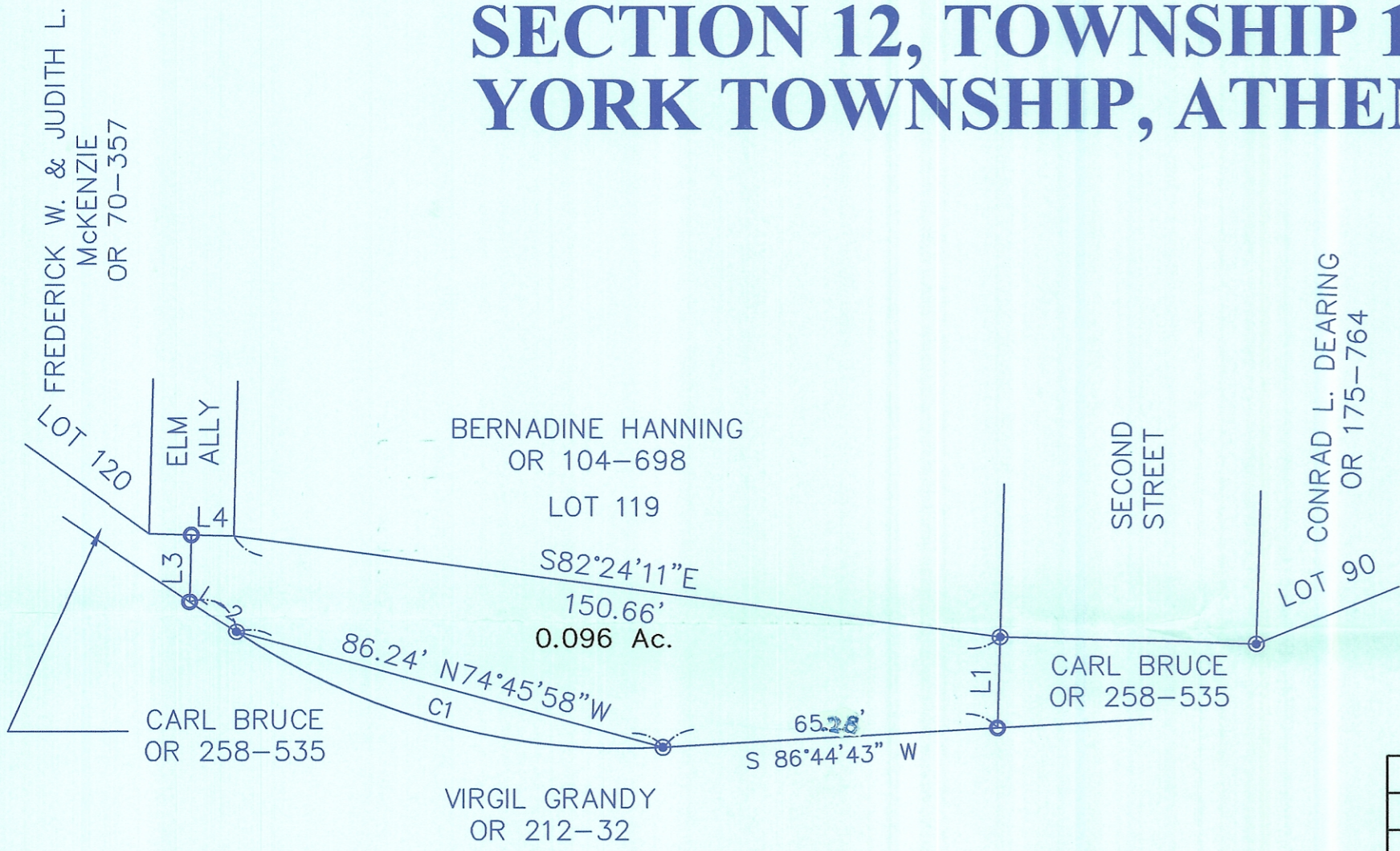


# SURVEY PLAT OF 0.096 ACRES IN VILLAGE OF BUCHTEL SECTION 12, TOWNSHIP 12, RANGE 15 YORK TOWNSHIP, ATHENS COUNTY, OHIO



### REFERENCES

- EXISTING DEEDS
- RECORDED PLATS
- TAX PLATS
- EXISTING MONUMENTS

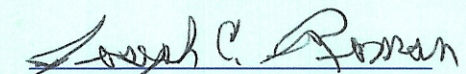
LINE TABLE		
LINE	LENGTH	BEARING
L1	17.90'	S01°33'42"W
L2	10.89'	N56°23'38"W
L3	13.06'	N01°33'42"E
L4	8.25'	S88°26'14"E

CURVE TABLE			
CURVE	LENGTH	RADIUS	DELTA ANGLE
C1	87.86'	136.57'	36°51'39"

### LEGEND

- IRON PIN FOUND
- IRON PIN SET-5/8" DIAMETER REBAR 30" IN LENGTH WITH 1-1/4" DIAMETER PLASTIC IDENTIFICATION CAP STAMPED "JOSEPH ROMAN RS-6461.

I HEREBY CERTIFY THIS PLAT WAS PREPARED FROM AN ACTUAL SURVEY OF THE PREMISES MADE BY ME IN OCTOBER 2002.

  
 JOSEPH C. ROMAN, RS# 6461  
 380 ELIZABETH STREET  
 NELSONVILLE, OHIO 45764  
 PHONE 740-753-2051

Description Checked for  
 Mathematical Accuracy  
 Athens County  
 ENGINEER'S OFFICE  
 BY: S. Blaus  
 DATE: 9-5-07

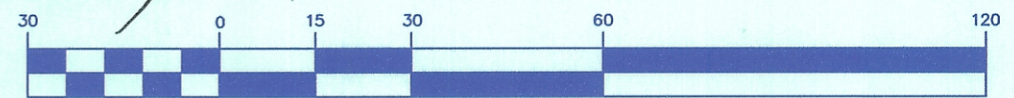
OK TO TRANSFER, NOT A SUBDIVISION. ASSUMED BEARING OF S 82° 24' 11" E FOR THE SOUTH LINE OF LOT 119.  
 TRANSFER BETWEEN ADJOINING OWNERS (CONTINUOUS & CONTIGUOUS) HEALTH DEPT.

APPROVAL NOT REQUIRED.

*Bob Eckenberg 9-5-07*

### BEARING BASIS

### GRAPHIC SCALE



( IN FEET )  
1 inch = 30 ft.

ASSUMED