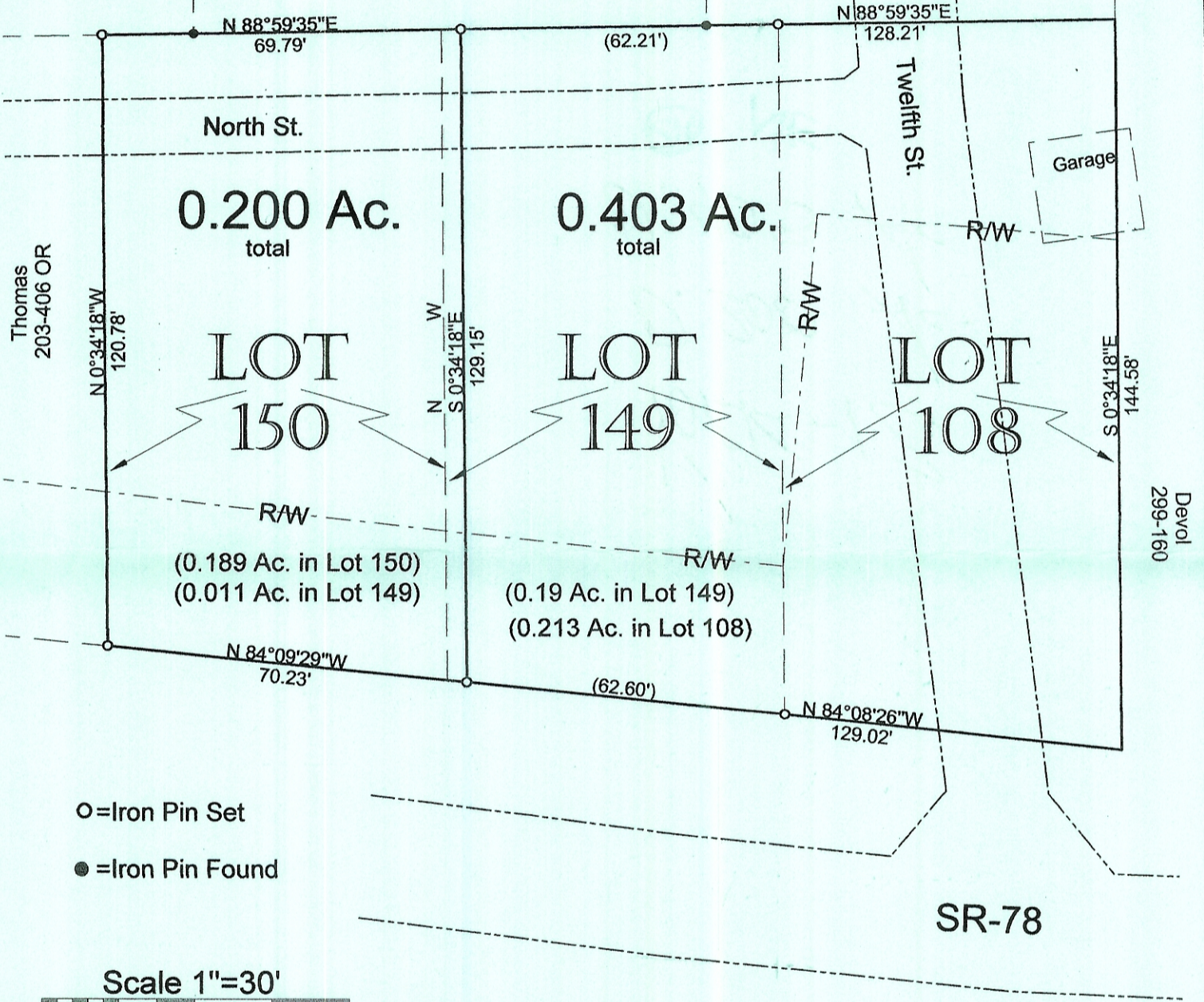


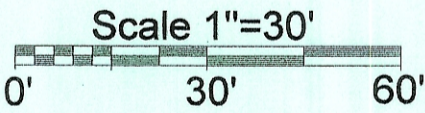


Herbert
378-44 OR

Martin
329-50 OR



- = Iron Pin Set
- = Iron Pin Found



Description Checked for
Mathematical Accuracy
Athens County
ENGINEER'S OFFICE

BY: R. Canterbury
DATE: 7/18/07

PLAT OF SURVEY OF 2 TRACTS
 SURVEYED FOR STEVE HOLTEL
 SUBDIVISION HALF MOON ADDN
 TOWNSHIP YORK SECTION 12 TOWN 12 RANGE 15
 CORPORATION BUCHTEL COUNTY ATHENS STATE OHIO
 SCALE 1"= 30' DATE JULY 2007

Kenneth E. Highland
80 Fayette St.
Nelsonville, Ohio 45764
740-753-1264

Kenneth E. Highland S-7581

