

DEED DESCRIPTION

TOWNSHIP 12 NORTH, RANGE 15 WEST, OHIO RIVER SURVEY YORK TOWNSHIP, ATHENS COUNTY, OHIO

SECTIONS 15, 16 AND 21:

TRACT 1 (Northwest):

Situated in the State of Ohio, Athens County, York Township, Township 12, Range 15, being part of Fraction 6 in Section 15 and parts of Sections 16 and 21, more particularly described as follows:

Beginning at a 3/4-inch rebar with aluminum cap set at the Southeast corner of Fraction 26, Section 21, Town 12, Range 15; where an 8-inch Chestnut Oak bears N 21°27'38" W a distance of 22.3 feet and a 12-inch Red Oak bears S 40°57'04" W a distance of 30.8 feet;
thence along the East line of Fraction 26, N 04°05'12" E a distance of 1246.96 feet to a 3/4-inch rebar with aluminum cap set, where a 10-inch Birch bears S 56°07'38" E a distance of 24.9 feet and an 8-inch Sweet Gum bears N 21°21'54" W a distance of 5.7 feet;
thence S 86°06'41" E a distance of 1323.48 feet to a 3/4-inch rebar with aluminum cap set, where a 12-inch White Oak bears N 88°55'32" E a distance of 9.2 feet and a 14-inch White Oak bears N 57°45'03" W a distance of 3.4 feet;
thence N 06°51'14" E a distance of 2132.34 feet to a 3/4-inch rebar with aluminum cap set, where a 10-inch Sycamore bears N 05°35'24" W a distance of 24.31 feet and an 8-inch Sycamore bears S 64°07'17" W a distance of 35.9 feet;
thence N 81°33'59" E a distance of 40.00 feet to a 3/4-inch rebar with aluminum cap set, where a 12-inch Elm bears S 38°50'50" E a distance of 11.6 feet and a 15-inch White Oak bears N 89°37'21" E a distance of 31.1 feet;
thence N 18°05'54" E a distance of 420.48 feet to a 3/4-inch rebar with aluminum cap set, where a triple Honey Locust bears S 39°55'23" E a distance of 9.3 feet and an 8-inch Black Cherry bears N 69°59'10" E a distance of 33.1 feet;
thence N 81°33'59" E a distance of 24.65 feet to a 3/4-inch rebar with aluminum cap set;
thence S 86°01'38" E a distance of 473.68 feet to a point in the center of Township Road No. 566, passing a 3/4-inch rebar with aluminum cap set at 435.56 feet;
thence along the center of Township Road No. 566 S 50°49'27" E a distance of 437.54 feet to a PK nail found;
thence S 50°14'03" E a distance of 340.16 feet to a point;
thence S 50°14'47" E a distance of 918.86 feet to a 1-inch I.D. pipe found;
thence leaving said Township Road No. 566 S 84°00'18" W a distance of 221.10 feet to a 3/4-inch rebar found, passing a 3/4-inch rebar with an aluminum cap set at 25.25 feet;
thence N 70°12'54" W a distance of 110.80 feet to a 3/4-inch rebar with aluminum cap set, where a 10-inch Sycamore bears N 25°44'17" W a distance of 5.3 feet and a 15-inch Sycamore bears N 38°37'11" E a distance of 6.9 feet;
thence S 69°00'06" W a distance of 205.25 feet to a 3/4-inch rebar with aluminum cap set, where a 5-inch White Oak bears N 50°27'55" W a distance of 36.08 feet and a 10-inch Elm bears N 15°25'39" E a distance of 11.2 feet;
thence S 52°05'58" W a distance of 141.03 feet to a 3/4-inch stainless steel rod found;
thence S 58°13'47" W a distance of 634.39 feet to a 1/2-inch I.D. pipe found;

thence S 70°28'19" E a distance of 379.21 feet to a ½- inch I.D. pipe found;
thence S 69°35'23" E a distance of 241.81 feet to the center of Athens County Road No. 1, passing a ½-inch I.D. pipe found at 228.25 feet;
thence along the center of County Road No. 1 the following six (6) courses;
 S 44°31'32" W a distance of 108.38 feet to a point;
 thence S 42°58'43" W a distance of 263.90 feet to a point;
 thence S 43°41'12" W a distance of 198.52 feet to a point;
 thence S 51°26'52" W a distance of 357.82 feet to a point;
 thence S 48°13'52" W a distance of 292.59 feet to a point;
 thence S 24°13'03" W a distance of 14.29 feet to a point;
thence leaving said road N 07°34'17" W a distance of 147.28 feet to a 5/8-inch capped rebar found, passing a 5/8-inch capped rebar found at 47.65 feet;
thence N 58°05'09" W a distance of 214.99 feet to a 5/8-inch capped rebar found;
thence N 58°18'21" W a distance of 188.81 feet to a 5/8-inch rebar found;
thence S 12°38'44" W a distance of 457.69 feet to a 5/8-inch capped rebar found;
thence S 64°50'16" E a distance of 72.00 feet to a 5/8-inch capped rebar found;
thence S 64°54'38" E a distance of 397.07 feet to the center of Athens County Road No. 1, passing a 5/8- inch capped rebar found at 272.17 feet;
thence along the center of Athens County Road No. 1 the following six (6) courses,
 S 25°26'16" W a distance of 254.45 feet to a point;
 thence S 30°07'56" W a distance of 75.22 feet to a point;
 thence S 32°12'05" W a distance of 84.51 feet to a point;
 thence S 37°19'27" W a distance of 143.13 feet to a point;
 thence S 43°04'41" W a distance of 144.39 feet to a point;
 thence S 45°39'20" W a distance of 83.08 feet to a point;
thence leaving said road N 81°19'12" W a distance of 242.86 feet to a 5/8-inch rebar found, passing a 5/8-inch rebar found at 24.91 feet;
thence N 54°14'12" W a distance of 488.95 feet to a 3/4-inch rebar with aluminum cap set;
thence N 55°22'56" W a distance of 385.62 feet to a 5/8-inch rebar found;
thence S 19°31'38" W a distance of 162.71 feet to a 5/8-inch rebar found;
thence S 37°29'55" E a distance of 337.99 feet to a 5/8-inch rebar found;
thence S 00°31'15" E a distance of 632.14 feet to a 5/8-inch rebar found;
thence S 69°00'10" E a distance of 149.65 feet to a 5/8-inch rebar found;
thence N 81°27'25" E a distance of 326.00 feet to a point in the center of Athens County Road No. 1, passing a 5/8-inch rebar found at 281.05 feet;
thence along the center of Athens County Road No. 1 the following four (4) courses,
 S 28°24'36" W a distance of 406.11 feet to a point;
 thence S 28°23'51" W a distance of 209.00 feet to a spike found;
 thence S 29°17'55" W a distance of 341.13 feet to a point;
 thence S 46°44'07" W a distance of 45.79 feet to a point;
thence leaving said road N 46°43'17" W a distance of 173.56 feet to a 5/8-inch rebar found, passing a 5/8- inch rebar found at 32.52 feet;
thence S 44°38'43" W a distance of 248.97 feet to a railroad spike set in the root of a 15-inch Hickory;
thence S 59°08'02" W a distance of 235.31 feet to a mine rail found;

thence N 22°26'04" W a distance of 1541.58 feet to a 5/8-inch rebar found, passing a 5/8- inch rebar found at 115.35 feet;

thence N 89°23'13" E a distance of 317.03 feet to the point of beginning, containing 143.707 acres, more or less. There being 67.2735 acres in Fraction 6, Section 15, 2.3905 acres in Fraction 8, Section 21 and 73.043 acres in Section 16.

Basis for bearings is true north based on G.P.S. observation by Sheldon Engineering Company, State Plane Coordinates are 1983, Ohio South Zone, NAD-83 feet. All bearings shown are used to denote horizontal angles only. This legal description was prepared by Robert G. Vernon, Professional Surveyor No. OH6282 WV550, based on field surveys in March 1998 and April 1998.

TRACT 2 (Southeast):

Situated in the State of Ohio, Athens County, York Township, Township 12, Range 15, being part of Fraction 6 and Fraction 12 in Section 15 and parts of Sections 16 and 21, more particularly described as follows:

Beginning at a 3/4-inch rebar with aluminum cap set on the south line of Fraction 12 T8N R16W (T12N R15W) 10.5 chains West of the Southeast corner of said Fraction, where a 15-inch Maple bears S 42°24'14" E a distance of 13.4 feet and a 12-inch Black Oak bears N 29°09'23" W a distance of 36.0 feet; thence leaving the south line of said Fraction N 04°05'58" E a distance of 4191.01 feet to a mine rail found the South line of section 16, where an 18-inch Poplar bears S 08°12'00" W a distance of 41.5 feet and an 8-inch Maple bears S 70°43'29" W a distance of 21.6 feet, passing a mine rail found at 3239.33 feet;

thence along the South line of Section 16 N 86°10'05" W a distance of 527.06 feet to a mine rail found; thence leaving the South line of Section 16 N 03°49'19" E a distance of 614.29 feet to a 3/4-inch rebar with aluminum cap set;

thence N 40°29'31" W a distance of 335.87 feet to a 5/8-inch rebar found;

thence N 88°54'06" W a distance of 172.62 feet to a 5/8-inch rebar found;

thence N 18°28'09" W a distance of 73.49 feet to a 5/8-inch rebar found;

thence N 00°08'12" W a distance of 259.06 feet to the center of Athens County Road No. 1, passing a 5/8-inch rebar found at 228.88 feet;

thence along the center of Athens County Road No. 1 S 87°06'44" W a distance of 91.06 feet to a point; thence leaving said road S 00°18'47" E a distance of 280.68 feet to a 1½-inch rebar found, passing a 1-1/2-inch rebar found at 19.66 feet;

thence S 04°32'38" E a distance of 240.67 feet to a 5/8-inch rebar found;

thence S 49°43'31" W a distance of 709.07 feet to a 3/4-inch rebar with aluminum cap set;

thence S 66°02'31" W a distance of 423.72 feet to a 5/8-inch rebar found;

thence S 43°37'26" W a distance of 887.85 feet to a 1-inch capped iron pipe found;

thence S 13°23'08" W a distance of 118.50 feet to a point in a creek;

thence S 08°13'28" W a distance of 157.25 feet to a point in a creek;

thence S 42°56'27" W a distance of 149.52 feet to a 5/8-inch rebar found;

thence S 71°43'05" W a distance of 165.60 feet to a 5/8-inch rebar found;

thence S 71°46'22" W a distance of 19.74 feet to a point in a creek;

thence S 47°41'09" W a distance of 117.45 feet to a 5/8-inch rebar found;

thence S 30°37'33" W a distance of 251.55 feet to a 3/4-inch rebar with aluminum cap set;

thence S 63°07'21" W a distance of 283.50 feet to a 3/4-inch rebar with aluminum cap set;
thence S 57°36'43" E a distance of 108.21 feet to a 5/8-inch rebar found;
thence S 16°30'02" W a distance of 682.91 feet to a 1/2-inch pipe found;
thence S 27°33'22" W a distance of 542.22 feet to a mine bolt found;
thence N 28°19'01" W a distance of 228.09 feet to a mine bolt found;
thence N 44°59'28" W a distance of 331.08 feet to the center of Athens County Road No. 1, passing a 1/2-inch pipe found at 287.44 feet;
thence following the center of Athens County Road No. 1 S 44°25'45" W a distance of 50.16 feet to a point;
thence leaving said road S 45°01'05" E a distance of 323.46 feet to a 5/8-inch rebar found, passing a 3/4-inch rebar with aluminum cap set at 43.50 feet;
thence S 28°18'17" E a distance of 212.96 feet to a 5/8-inch rebar found;
thence S 69°10'32" W a distance of 666.00 feet to a 5/8-inch rebar found;
thence N 31°57'26" W a distance of 311.49 feet to a point in the center of Athens County Road No. 1, passing a 5/8-inch rebar found at 281.25 feet;
thence along the center of Athens County Road No. 1 the following six (6) courses,
 S 65°23'37" W a distance of 132.28 feet to a point;
 thence along a curve to the left, whose radius is 346.27 feet, whose length is 194.71 feet, whose central angle is 32°13'01", whose chord bearing is S 48°05'06" W and whose chord distance is 192.15 feet to a point;
 thence S 31°58'37" W a distance of 222.00 feet to a point;
 thence S 30°47'37" W a distance of 100.00 feet to a railroad spike found;
 thence S 21°27'53" W a distance of 193.58 feet to a point;
 thence S 14°19'57" W a distance of 464.61 feet to a point;
thence leaving the center of said road S 47°50'52" E a distance of 183.88 feet to a 2 1/2-inch diameter split base magnetic monument with 3-inch diameter cap stamped "PS 6282" set, passing a 2 1/2-inch diameter standard government monument set at 24.78 feet;
thence S 29°36'14" W a distance of 55.68 feet to a 3/4-inch rebar set on the South line of Fraction 6 T8N R16W (T12N R15W), where a 10-inch Maple bears S 19°19'41" W a distance of 23.7 feet and a 12-inch Maple bears S 11°37'29" E a distance of 47.3 feet;
thence along the south line of said Fraction S 86°11'08" E a distance of 4716.23 feet to the point of beginning, containing 339.709 acres, more or less. There being 199.365 acres in Fraction 12, Section 15, 124.1818 acres in Fraction 6, Section 15, 1.3932 acres in Fraction 8, Section 21 and 14.769 acres in Section 16.

Also being conveyed is an easement for ingress and egress reserved by grantor from a 10.19 acre tract conveyed to Harold Lowery from the Ohio Mining Company by deed dated August 6, 1992, and recorded in official record book 125, page 547, on file in the office of the Athens County Recorder in Athens, Ohio.

Commencing at the Northeast corner of the 10.19 acre tract;
thence with the east line of said tract S 00°18'47" E a distance of 280.68 feet to a 1 1/2-inch rebar found;
thence S 04°32'38" E a distance of 58.14 feet to a point, said point being the place of beginning for the centerline of a 50 foot wide easement for ingress and egress;
thence N 33°47'14" W a distance of 65.09 feet to an iron pin;
thence N 80°11'24" W a distance of 153.12 feet to an iron pin;
thence N 08°25'36" E a distance of 254.26 feet to a point in County Road No. 1 and there to terminate.

Basis for bearings is true north based on G.P.S. observation by Sheldon Engineering Company, State Plane Coordinates are 1983, Ohio South Zone, NAD-83 feet. All bearings shown are used to denote horizontal angles only. This legal description was prepared by Robert G. Vernon, Professional Surveyor No. OH6282 WV550, based on field surveys in March 1998 and April 1998.

Total acreage hereby being conveyed is 483.416 acres, more or less.

Prior Reference: Athens County Deed Volume 179, Page 344.

Athens County Tax Parcels Nos.

P01-00100350-00 in Section 16 for 73.043 acres by survey (previously taxed as 67.73 acres).

P01-00100358-00 in Section 16 for 14.789 acres by survey (previously taxed as 13.25 acres).

P01-00100360-00 in Sections 15, Fraction 6 for 192.4553 acres by survey, Section 21, Fraction 8 for 3.7837 acres by survey (previously taxed as 190.39 acres for both sections).

P01-00100370-00 in Section 15 for 199.365 acres by survey (previously taxed as 206.00 acres).

Tony A. Krasner
7/2/1998

98-4236

Sheet 1 of 15

Prepared For

U.S.D.A. Forest Service
Wayne National Forest

State of Ohio
Athens County
York Township

Sections 15, 16, and 21
Fractional Lots 12, 8, and 6
Ohio Mining Company
143.707 Acre Northwest Tract
339.709 Acre Southeast Tract

Index

- Sheet 1 - Title Page
- Sheet 2 - Drawing Index
- Sheet 3 - Drawing Sheet 3
- Sheet 4 - Drawing Sheet 4
- Sheet 5 - Drawing Sheet 5
- Sheet 6 - Drawing Sheet 6
- Sheet 7 - Drawing Sheet 7
- Sheet 8 - Drawing Sheet 8
- Sheet 9 - Drawing Sheet 9
- Sheet 10 - Drawing Sheet 10
- Sheet 11 - SE Tract Bearing Table
- Sheet 12 - NW Tract Bearing Table
- Sheet 13 - Property Owners Table
- Sheet 14 - SE Tract Legal
- Sheet 15 - NW Tract Legal

Legend

- Pin or Rebar Found
- Pin Set 3/4" x 36"
Rebar with aluminum cap stamped "Vernon PS6282" Standard Forest Service Mon.
- ⊗ Pipe or Rod Found
- Mine Bolt Found
- ⊕ GPS Monument
- ▣ Iron Rail Found
- ▲ Railroad Spike Found
- Axle Found
- 2 1/2" Split Base Monument Capped

Notes

- 1) Border lines on sheets are used as match lines on drawings.
- 2) Basis for bearings is true north based on GPS observation by Sheldon Engineering & Surveying Company. State Plane coordinates are 1983, Ohio South Zone, NAD-83 feet
- 3) Important documents used - Deeds of Record, Plats of Record, and Original County Survey Records.



Robert G. Vernon

5/28/98

Robert G. Vernon
PS OH6282 WV550

Date

DRAWN BY: LKM

DATE: May 4, 1998

DWG. NO.: 98-4236

APPROVED BY: RGV

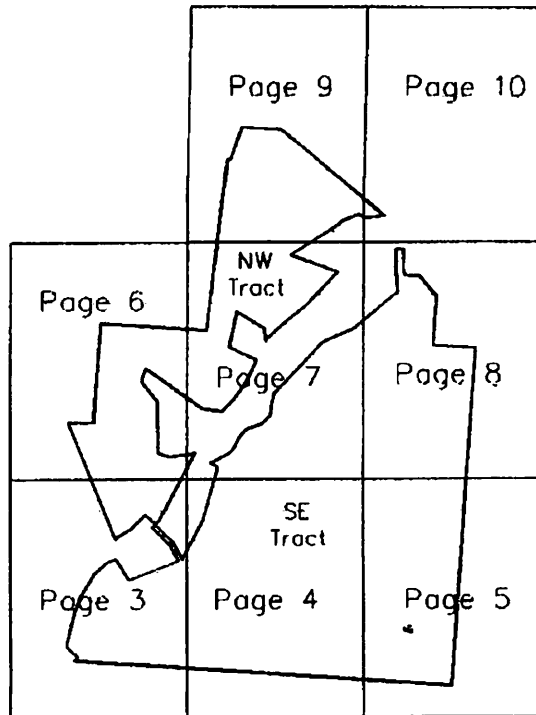
POST OFFICE BOX 741
MARIETTA, OH 45750
TELEPHONE (740) 373-8397
FAX (740) 373-8266

VERNON

VERNON SURVEYING COMPANY
PROFESSIONAL SURVEYORS

SHT. NO.

1



Drawing Index

No Scale

DRAWN BY: LKM
DATE: May 4, 1998
DWG. NO.: 98-4236
APPROVED BY: RGV

POST OFFICE BOX 741
MARIETTA, OH 45750
TELEPHONE (740) 373-8397
FAX (740) 373-8266

VERNON

VERNON SURVEYING COMPANY
PROFESSIONAL SURVEYORS

SHT. NO.

2

See Sheet 6



James E. &
Janice L. McKnight
D.B. 100-144
10.60 Acres

Northwest Tract
(67.2735 Acres)

York Township Board
of Education
D.B. 232-549
D.B. 232-551
10.96 Acres

Curve Data

Radius: 346.27'
Length: 194.71'
Angle: 32°13'01"
Chord: S 48°05'06W
192.15'

Southeast Tract
Fraction 6
(124.1818 Acres)

Section 21
Section 15

Co. Rd. No. 7

1.3815 Acres

0.0117 Acres

U.S.A.
D.B. 283-415

0 300 600



Scale 1" = 300'

DRAWN BY: LKM

DATE: May 4, 1998

DWG. NO.: 98-4236

APPROVED BY: RGV

POST OFFICE BOX 741
MARIETTA, OH 45750
TELEPHONE (740) 373-8397
FAX (740) 373-8266

VERNON

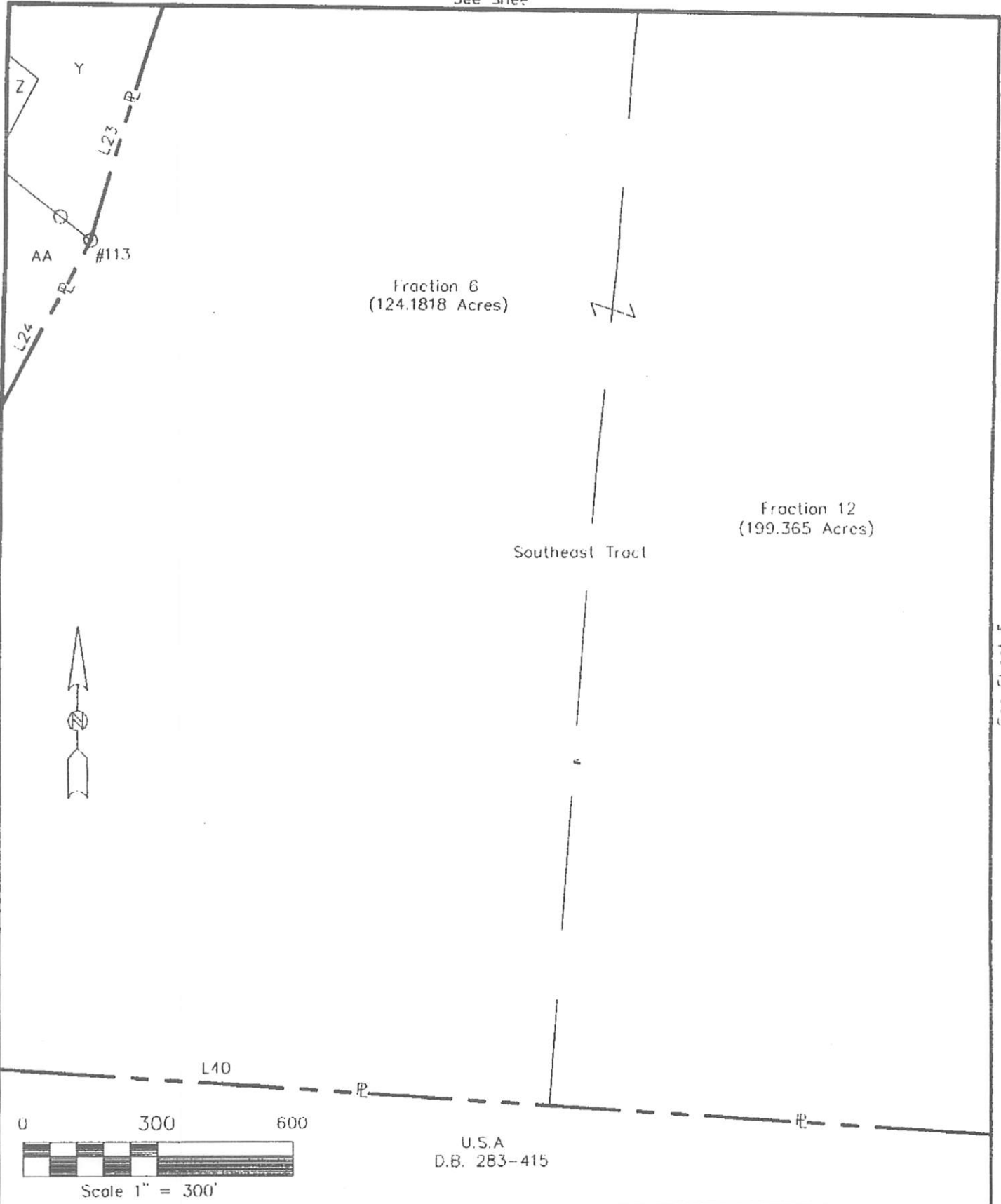
VERNON SURVEYING COMPANY
PROFESSIONAL SURVEYORS

SHT. NO.

3

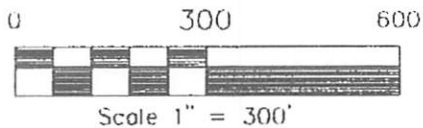
See Sheet 4

See Sheet 1



See Sheet 3

See Sheet 2



U.S.A
D.B. 283-415

DRAWN BY: LKM
 DATE: May 4, 1998
 DWG. NO.: 98-4236
 APPROVED BY: RCV

POST OFFICE BOX 741
 MARIETTA, OH 45750
 TELEPHONE (740) 373-8397
 FAX (740) 373-8266

VERNON

VERNON SURVEYING COMPANY
PROFESSIONAL SURVEYORS

SHT. NO.

4

See Sheet 4

Southeast Tract
Fraction 12
(199.365 Acres)

Dry Dock Coal Company
D.B. 382-807



Scale 1" = 300'

U.S.A.
D.B. 283-415

140

#545

DRAWN BY: LKM

DATE: May 4, 1998

DWG. NO.: 98-4236

APPROVED BY: RGV

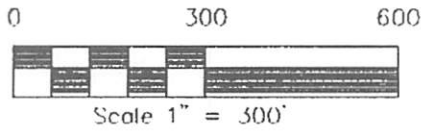
POST OFFICE BOX 741
MARIETTA, OH 45750
TELEPHONE (740) 373-8397
FAX (740) 373-8266

VERNON

VERNON SURVEYING COMPANY
PROFESSIONAL SURVEYORS

SHT. NO.

5



U.S.A.
D.B. 160-477
130.14 Acres

U.S.A.
D.B. 160-477
212.13 Acres

Northwest Tract
(67.2735 Acres)

James E. &
Janice L. McKnight
D.B. 100-144
10.60 Acres

(2.3905)
Acres

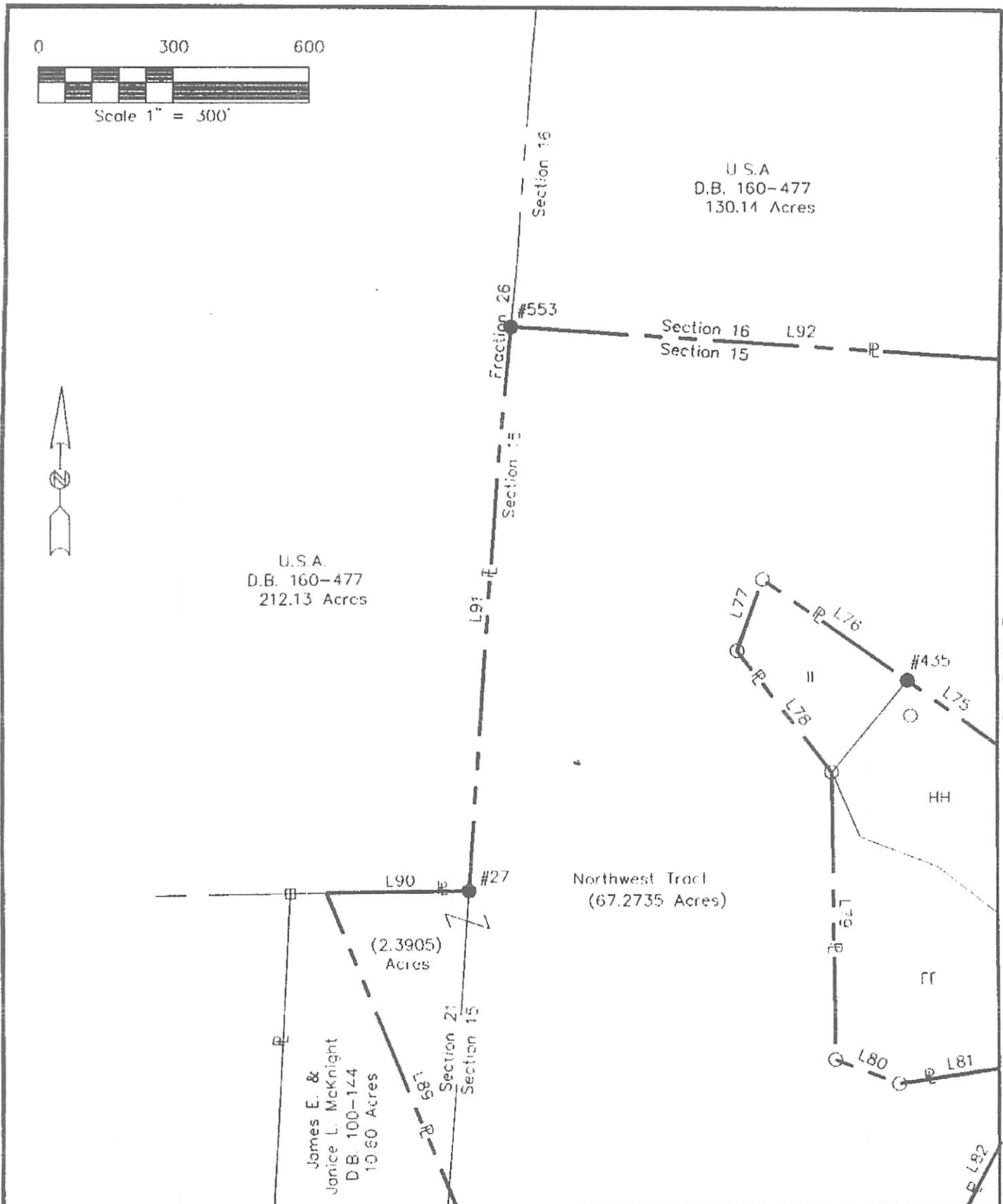
DRAWN BY: LKM
DATE: May 4, 1998
DWG. NO.: 98-4236
APPROVED BY: RGV

See Sheet 3
POST OFFICE BOX 741
MARIETTA, OH 45750
TELEPHONE (740) 373-8397
FAX (740) 373-8266

VERNON

VERNON SURVEYING COMPANY
PROFESSIONAL SURVEYORS

SHT. NO.
6



See Sheet

U.S.A.
D.B. 160
PG 477
130.14 Acres

Northwest Tract
(73.043 Acres)

(67.2755 Acres)

Southeast Tract

Fraction 12
(199.365 Acres)

Fraction 6
(125.575 Acres)

0 300 600

Scale 1" = 300'



See Sheet 6

See Sheet 8

DRAWN BY:	LKM
DATE:	May 4, 1998
DWG. NO.:	98 4236
APPROVED BY:	RGV

See Sheet 4

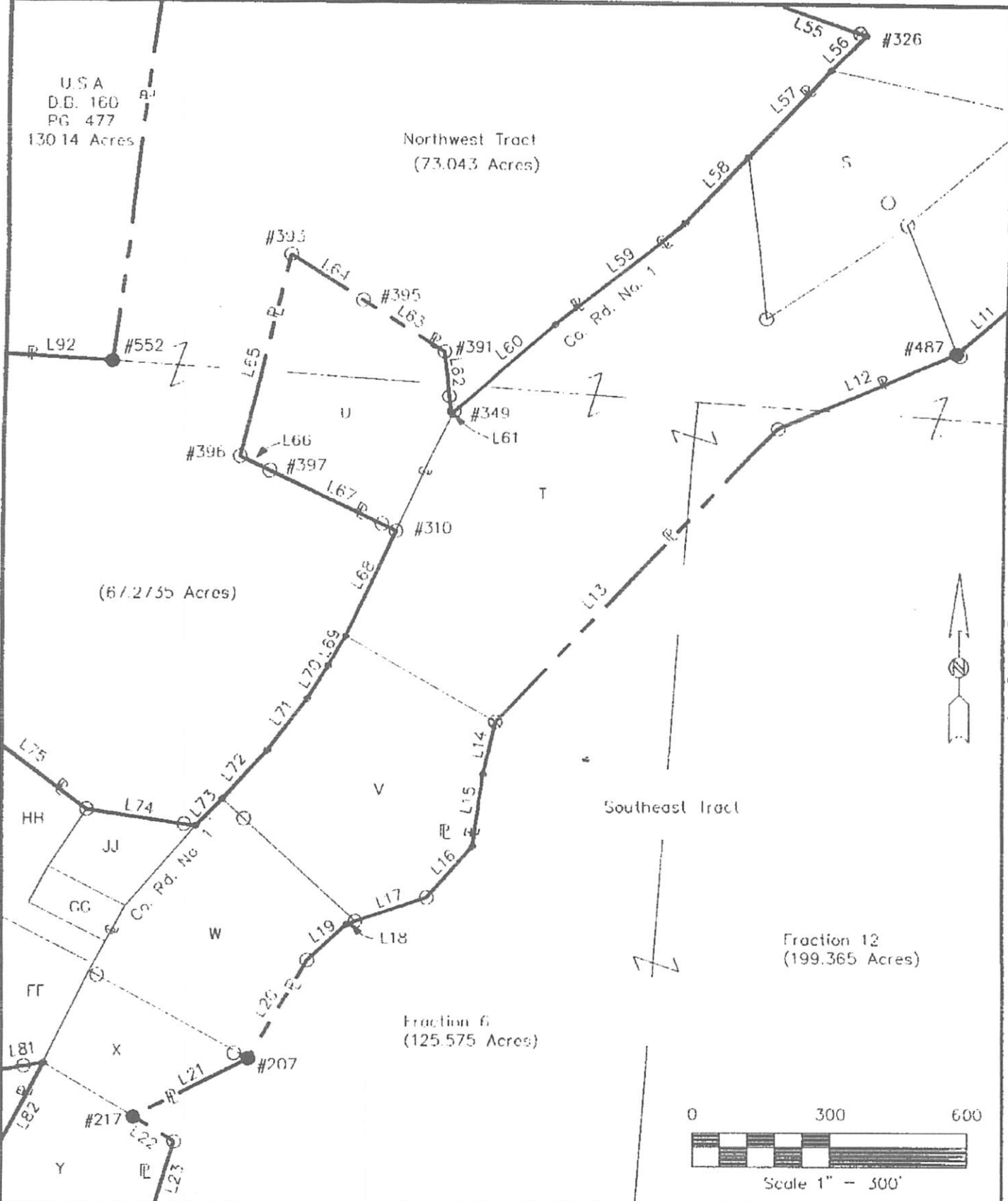
POST OFFICE BOX 741
MARIETTA, OH 45750
TELEPHONE (740) 373-8397
FAX (740) 373-8266

VERNON

VERNON SURVEYING COMPANY
PROFESSIONAL SURVEYORS

SHEET NO

7



See Sheet 10

Centrline 50' Easement
OR125-547

R

L10

#507
#506
#505

L5

L4

#556

L3

L2

Section 16
Section 15

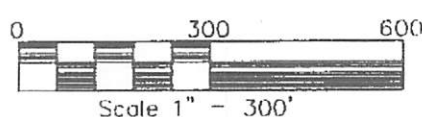
SE Corner
Section 16

(14.769 Acres)

Southeast Tract
Fraction 12
(199.365 Acres)

Anthony Castenova
D.B. 47-961

Dry Dock Coal Company
D.B. 382-807



See Sheet 7

DRAWN BY: LKM
 DATE: May 4, 1998
 DWG. NO.: 98-4236
 APPROVED BY: RGV

See Sheet 5
 POST OFFICE BOX 741
 MARIETTA, OH 45750
 TELEPHONE (740) 373-8397
 FAX (740) 373-8266

VERNON
 VERNON SURVEYING COMPANY
 PROFESSIONAL SURVEYORS

SHT. NO
 8



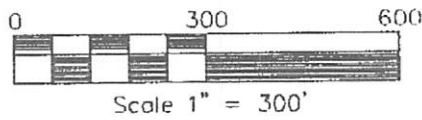
U.S.A.
D R 160-477
130.14 Acres

L42
#549 #551

#550
#373
L44
L15
#573

Northwest Tract
(73 013 Acres)

See Sheet 10



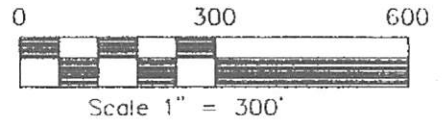
#328
L53
L54

DRAWN BY: LKM
DATE: May 4, 1998
DWC. NO.: 98-4236
APPROVED BY: RGV

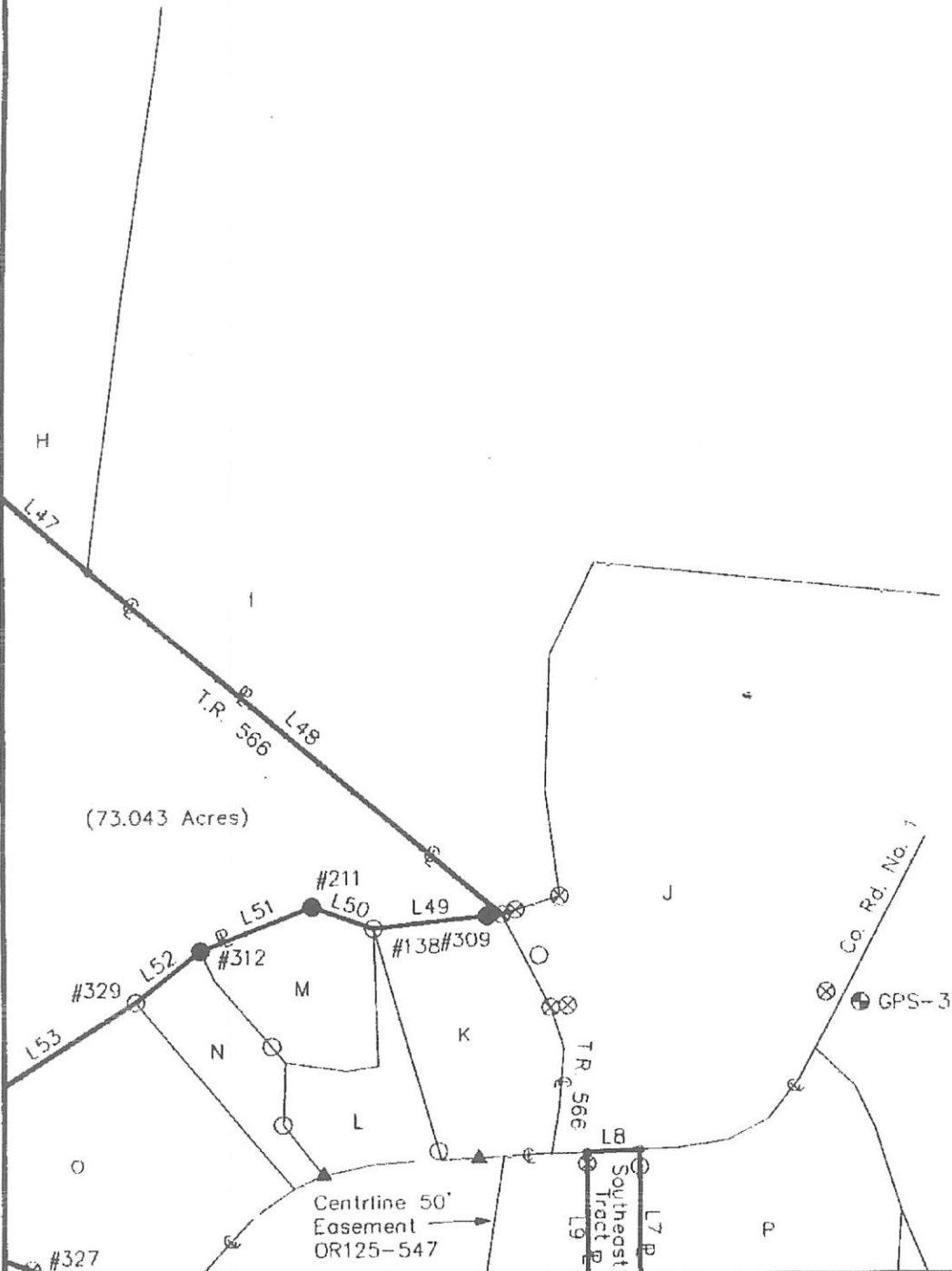
See Sheet 7
POST OFFICE BOX 741
MARIETTA, OH 45750
TELEPHONE (740) 373 8397
FAX (740) 373-8266

VERNON
VERNON SURVEYING COMPANY
PROFESSIONAL SURVEYORS

SHT NO
9



See Sheet 9



DRAWN BY: LKM

DATE: May 4, 1998

DWC. NO.: 98-4236

APPROVED BY: RGV

See Sheet 8

POST OFFICE BOX 741
 MARIETTA, OH 45750
 TELEPHONE (740) 373-8397
 FAX (740) 373-8266

VERNON

VERNON SURVEYING COMPANY
PROFESSIONAL SURVEYORS

SHT. NO.

10

APPROVED BY: RGV
 DWG. NO.: 98-4236
 DATE: May 4, 1998
 DRAWN BY: LKM

POST OFFICE BOX 741
 MARIETTA, OH 45750
 TELEPHONE (740) 373-8397
 FAX (740) 373-8266

VERNON
 PROFESSIONAL SURVEYORS
 VERNON SURVEYING COMPANY

SHT. NO. 11

Note: (M) - Measured Distance
 (D) - Deed Distance

NUMBER	DIRECTION	DISTANCE (M)	DISTANCE (D)
L1	N 04°05'58" E	4191.00'	
L2	N 86°10'05" W	527.06'	
L3	N 03°49'19" E	614.29'	
L4	N 40°29'31" W	335.87'	
L5	N 88°54'06" W	172.62'	172.56'
L6	N 18°28'09" W	73.49'	73.50'
L7	N 00°08'12" W	259.06'	
L8	S 87°06'44" W	91.06'	
L9	S 00°18'47" E	280.68'	
L10	S 04°32'38" E	240.67'	240.52'
L11	S 49°43'31" W	709.07'	768.54'
L12	S 66°02'31" W	423.72'	
L13	S 43°37'26" W	887.85'	888.27'
L14	S 13°23'06" W	118.50'	119.18'
L15	S 08°13'28" W	157.25'	
L16	S 42°56'27" W	149.52'	
L17	S 71°43'05" W	165.60'	165.92'
L18	S 71°46'22" W	19.74'	
L19	S 47°41'09" W	117.45'	116.65'
L20	S 30°37'33" W	251.55'	
L21	S 63°07'21" W	283.50'	283.43'
L22	S 57°36'43" E	106.21'	
L23	S 16°30'02" W	682.91'	681.27'
L24	S 27°33'22" W	542.22'	541.82'
L25	N 28°19'01" W	228.09'	227.78'
L26	N 44°59'28" W	331.08'	
L27	S 44°25'45" W	50.16'	
L28	S 45°01'05" E	323.46'	
L29	S 28°18'17" E	212.96'	212.64'
L30	S 69°10'32" W	666.00'	666.02'
L31	N 31°57'26" W	311.49'	
L32	S 65°23'37" W	132.28'	
L33	S 48°05'06" W	192.15'	
L34	S 31°58'37" W	222.00'	
L35	S 30°47'37" W	100.00'	
L36	S 21°27'53" W	193.58'	
L37	S 14°19'57" W	464.61'	
L38	S 47°50'52" E	183.88'	
L39	S 29°36'14" W	55.68'	
L40	S 86°11'08" E	4716.23'	

Bearing Sheet for
 Southeast Property
 339.7090 Acres

98-4236
 Sheet 11 of 15

98-4236

Sheet 12 of 15

Bearing Sheet for
Northwest Property
143.7072 Acres

NUMBER	DIRECTION	DISTANCE (M)	DISTANCE (D)
L41	N 06°51'14" E	2132.34	
L42	N 81°33'59" E	40.00	
L43	N 18°05'54" E	420.48	
L44	N 81°33'59" E	24.65	
L45	S 86°01'38" E	473.68	
L46	S 50°49'27" E	437.53	
L47	S 50°14'03" E	340.16	
L48	S 50°14'47" E	918.86	
L49	S 84°00'18" W	221.10	221.27
L50	N 70°12'54" W	110.80	
L51	S 69°00'06" W	205.25	
L52	S 52°05'58" W	141.03	
L53	S 58°13'47" W	634.39	634.99
L54	S 70°28'19" E	379.21	
L55	S 69°35'23" E	241.81	241.56
L56	S 44°31'32" W	108.38	
L57	S 42°58'43" W	263.90	
L58	S 43°41'12" W	198.52	
L59	S 51°26'52" W	357.82	
L60	S 48°13'52" W	292.59	
L61	S 24°13'03" W	14.29	
L62	N 07°34'17" W	147.28	147.04
L63	N 58°05'09" W	214.98	214.88
L64	N 58°18'21" W	188.60	188.64
L65	S 12°38'44" W	457.69	457.29
L66	S 64°50'16" E	72.01	
L67	S 64°54'38" E	307.07	
L68	S 25°26'16" W	254.45	
L69	S 30°07'56" W	75.22	
L70	S 32°12'05" W	84.51	
L71	S 37°19'27" W	143.13	
L72	S 43°04'41" W	144.39	
L73	S 45°39'20" W	83.08	
L74	N 81°19'12" W	242.86	
L75	N 54°14'12" W	488.95	
L76	N 55°22'56" W	385.62	385.89
L77	S 19°31'38" W	162.71	163.04
L78	S 37°29'55" E	337.99	337.95
L79	S 00°31'15" E	632.14	632.20
L80	S 69°00'10" E	149.65	149.62
L81	N 81°27'25" E	326.00	
L82	S 28°24'36" W	406.11	
L83	S 28°23'51" W	209.00	
L84	S 29°17'55" W	341.13	
L85	S 46°44'07" W	45.79	
L86	N 46°43'17" W	173.56	
L87	S 44°38'43" W	248.97	
L88	S 59°08'02" W	235.31	236.48
L89	N 22°26'04" W	1541.58	1542.37
L90	N 89°23'13" E	317.03	
L91	N 04°05'12" E	1246.96	
L92	S 86°06'41" E	1323.48	

Note: (M)* - Measured Distance
(D)* - Deed Distance

SHT. NO.

12

VERNON

VERNON SURVEYING COMPANY
PROFESSIONAL SURVEYORS

POST OFFICE BOX 741
MARIETTA, OH 45750
TELEPHONE (740) 373-8397
FAX (740) 373-8266

DRAWN BY: LKM

DATE: May 4, 1998

DWG. NO.: 98-4236

APPROVED BY: RGV

98-4236

Sheet 13 of 13

Property Owners

Parcel	Owner	Volume	Page	Acreage	Drawing Sheet
A	Charles & Patricia Martin	379	727	1.24	9
B	Bertha F. Rucker	354	265	0.92	9
C	Judy S. Pickett	92	426	1.0	9
D	Nancy L. Waldren	163	429	0.81	9
E	Kevin H. & Elaine F. Lindsey	76	33,35	0.61, 0.58	9
F	Helen Bond	370	129	1.07	9
		385	585		
G	Clarence R. & Carolyn K. Warren	100	832		9
H	Kory L. Jones	188	719	5.45	10
I	Clifford A. & Robin L. Warren	63	837	31.55	10
J	Columbus & Southern Ohio Elec. Co.	350	581	10.27	10
K	Athens County Commissioners	54	153	2.23	10
L	Virginia & Max Valkinburg	321	483	1.12	10
M	Virginia & Max Valkinburg	15	184	1.3	10
N	To Be Conveyed To Valkinburg				10
O	Myrven R., Jr. & Amy Davis	106	935	5.01	9 & 10
P	Merle E. & Alice O. Howson	97	935	4.28	10
Q	To Be Conveyed To Howson				8
R	Harold Lowery	125	547	10.19	7 & 8
S	Harold Lowery	81	137	3.98	7
T	Nelsonville Consulting & Construction Co.	42	442	15.04	7
U	William L. & Tracie L. Newlun	75	947	3.00	7
V	Maiden & Jenkins Construction Co.	151	240	3.61	7
W	Roy D. Saylor	191	89	3.87	7
X	Deborah Saylor	157	86	1.66	7
Y	Denver R. & Connie Sue Johnson	383	487	5.00	4 & 7
Z	Robert & Cheryl Dishong	298	178	0.99	3 & 4
AA	Margaret H. Dozett	358	213	5.01	3 & 4
BB	Melvin A. & Electra Teal	307	895	1.0	3
CC	Richard & Connie Elliott	375	467	5.01	3
DD	Robert L. & Patricia F. Cain	346	877	1.0	3
EE	Robert L. & Patricia F. Cain	353	547	1.0	3
		225	670		
FF	Charles & Brenda Lee Wachenschwanz	226	775	5.00	6 & 7
GG	Charles & Brenda Lee Wachenschwanz	97	162	0.36	7
HH	Charles & Brenda Lee Wachenschwanz	40	186	3.79	6 & 7
II	Charles & Brenda Lee Wachenschwanz	226	775	1.69	6
JJ	Gloria Lee Wachenschwanz	79	19	0.85	7
KK	Nelsonville York Board of Education	156	159	1.40	3
LL	Mary Davis	378	789	4.64	3
MM	Betty Rife	333	41	4.0	3
NN	To Be Conveyed To Betty Rife				

DRAWN BY: LKM

DATE: May 4, 1998

DWC. NO.: 98-4236

APPROVED BY: RGV

POST OFFICE BOX 741
 MARIETTA, OH 45750
 TELEPHONE (740) 373-8397
 FAX (740) 373-8266

VERNON

VERNON SURVEYING COMPANY
 PROFESSIONAL SURVEYORS

SHT. NO.

13

Instrument
 9800008791