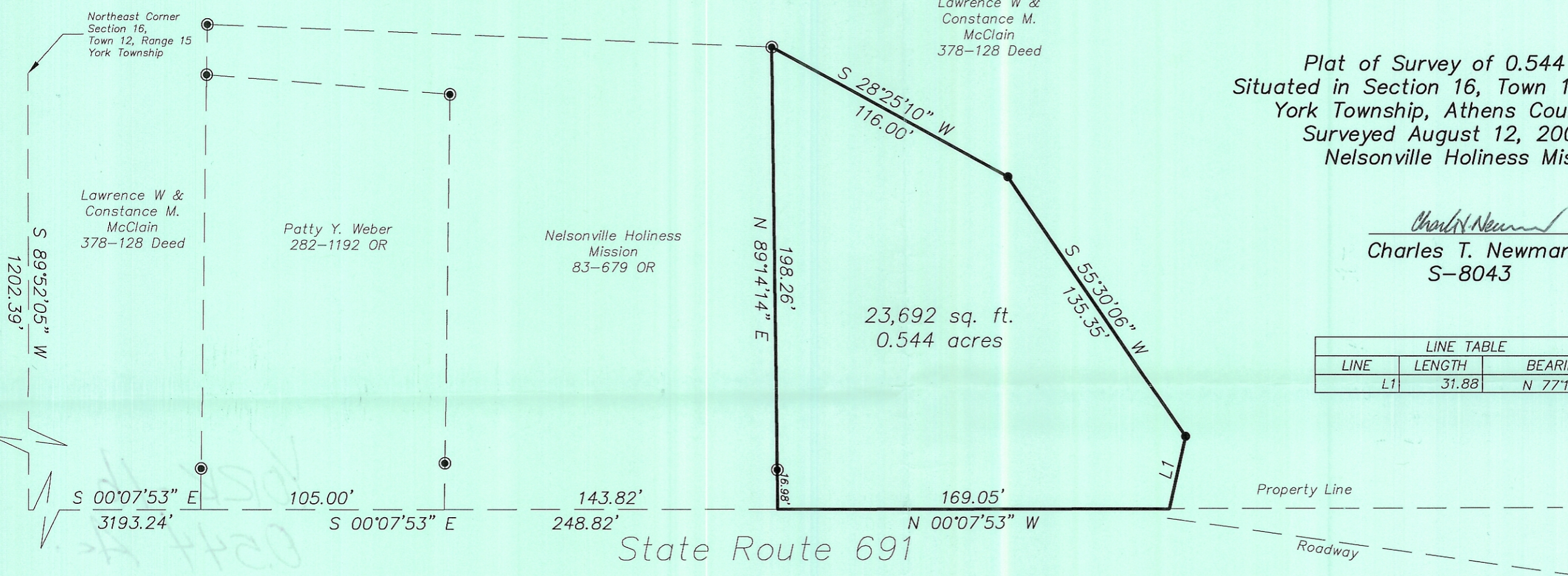


Plat of Survey of 0.544 Acres  
 Situated in Section 16, Town 12, Range 15,  
 York Township, Athens County, Ohio  
 Surveyed August 12, 2002 for:  
 Nelsonville Holiness Mission

*Charles T. Newman*  
 Charles T. Newman  
 S-8043

LINE TABLE		
LINE	LENGTH	BEARING
L1	31.88	N 77°19'25" W

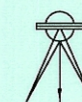


Description checked for  
 Mathematical Accuracy  
 ATHENS COUNTY  
 ENGINEER'S OFFICE  
 BY: *S. Blausg*  
 DATE: 8-13-02

- △ = Railroad Spike Found
- ▲ = Railroad Spike Set
- ⊙ = Iron Pin Found
- = Iron Pin Set
- = Stone Found
- ⊕ = Monument Found



Member of Professional Land Surveys, Subdivisions  
 Land Surveyors of Ohio



C. TIM NEWMAN  
 Professional Surveyor

66 Elmwood Place 740-594-1884  
 Athens, Ohio 45701 FAX 740-594-9413

GRAPHIC SCALE



( IN FEET )  
 1 inch = 50 ft.