



N.W. corner of
Outlot 1

Hocking County
Athens County

Brooks
160-348 OR

S 5°40'33"W
100.00'

N 84°40'42"E
1061.23'

2.929 Ac.
(2.369 Ac.)

S 5°40'33"W
185.97'

(0.554 Ac.)

S 66°02'56"W
196.26'

N 87°02'19"W
828.69'

Edwards
296-2225 OR

Edwards
7-706 OR

Stimel
192-886 OR

Edwards
196-335 OR

Line	Bearing	Distance
1	S 41°11'32"W	41.18'
2	N 44°15'16"W	31.47'
3	N 11°53'33"W	42.30'
4	N 16°17'52"E	94.35'

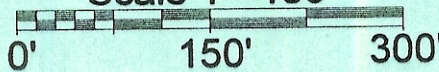
- = Iron Pin Set
- = Iron Pin Found
- = Stone Found

NOTE: This is a transfer between adjoining owners and this tract must remain continuous and continuous with the tract to the North.

Description Checked for
Mathematical Accuracy
Athens County
ENGINEER'S OFFICE

BY: *S. Blause*
DATE: *1-22-07*

Scale 1"=150'



PLAT OF SURVEY OF A 2.929 AC. TRACT

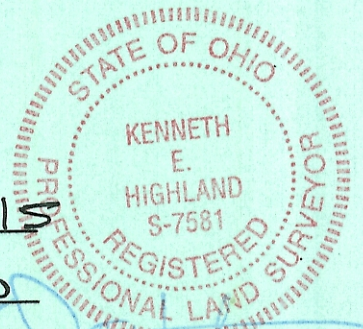
SURVEYED FOR MIKE BROOKS

SUBDIVISION RIVER LOTS 646, 647 & 648

TOWNSHIP YORICK SECTION 24 TOWN 12 RANGE 15

CORPORATION NELSONVILLE COUNTY ATHENS STATE OHIO

SCALE 1"= 150' DATE JAN 2007
Kenneth E. Highland
80 Fayette St.
Nelsonville, Ohio 45764
740-753-1264



Kenneth E. Highland S-7581