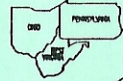


PROFESSIONAL LAND SURVEYORS

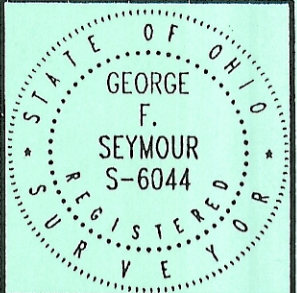


SEYMOUR & ASSOCIATES

P.O. Box 624
830 W. Hunter St. 614-385-4349
Ligon, Ohio 43138

PLAT OF SURVEY

BEING LOT 261 & 258 pt. of L.D. PASTON'S
ADDITION AND LOTS 1282, 1283 AND A PART
OF C.L. PASTON'S MOUND ADDITION TO THE
CITY OF NELSONVILLE, YORK TOWNSHIP, ATHENS
COUNTY, STATE OF OHIO



FOR: RHONDA DIETRICK

PROJ. No.: AT 9501

BY: G.F.S.

DATE: 1-28-98

EXHIBIT "B"

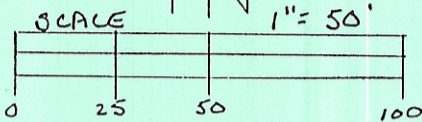
NOTE: BEARINGS ARE
ASSUMED AND ARE FOR THE
DETERMINATION OF ANGLES
ONLY, BASED ON THE SOUTH LINE
OF LOT 1283 AS THE EASTWEST

LEGEND REV. 12-14-00

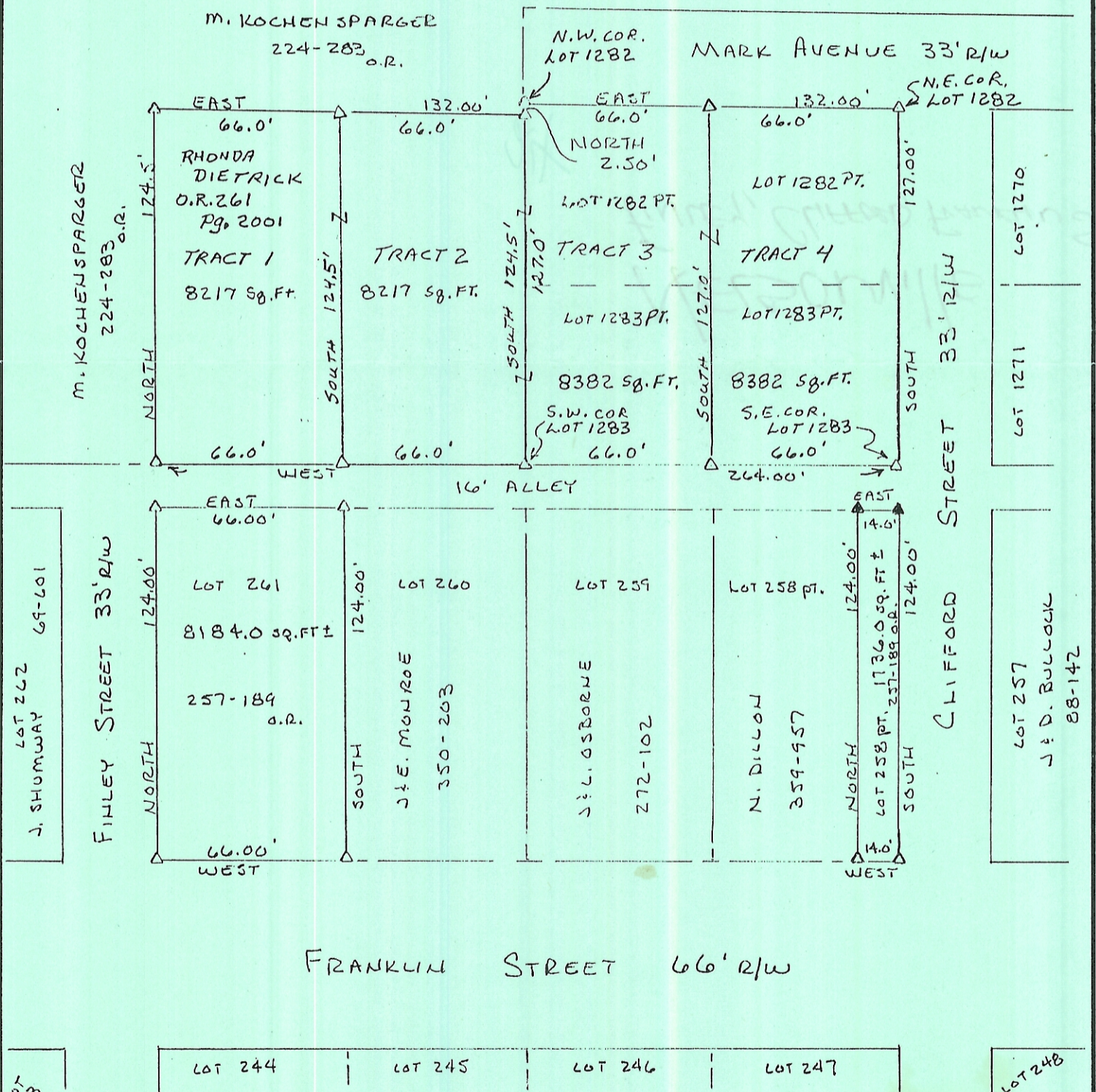
- △ 3/8" x 30" I.PIN W/I.D. CAP SET
- ▲ RAILROAD SPIKE SET

REFERENCES

- CURRENT TAX PLATS
- VILLAGE PLATS
- PREVIOUS SURVEYS
- DEEDS: AS NOTED ON PLAT



Description checked for
Mathematical Accuracy
ATHENS COUNTY
ENGINEER'S OFFICE
BY: S. Blausen
DATE: 1-19-01



PLAT PREPARED FROM AN ACTUAL SURVEY MADE ON THE
28TH DAY OF JANUARY, 1998 BY,

George F. Seymour
OHIO PROFESSIONAL SURVEYOR

No. 6044