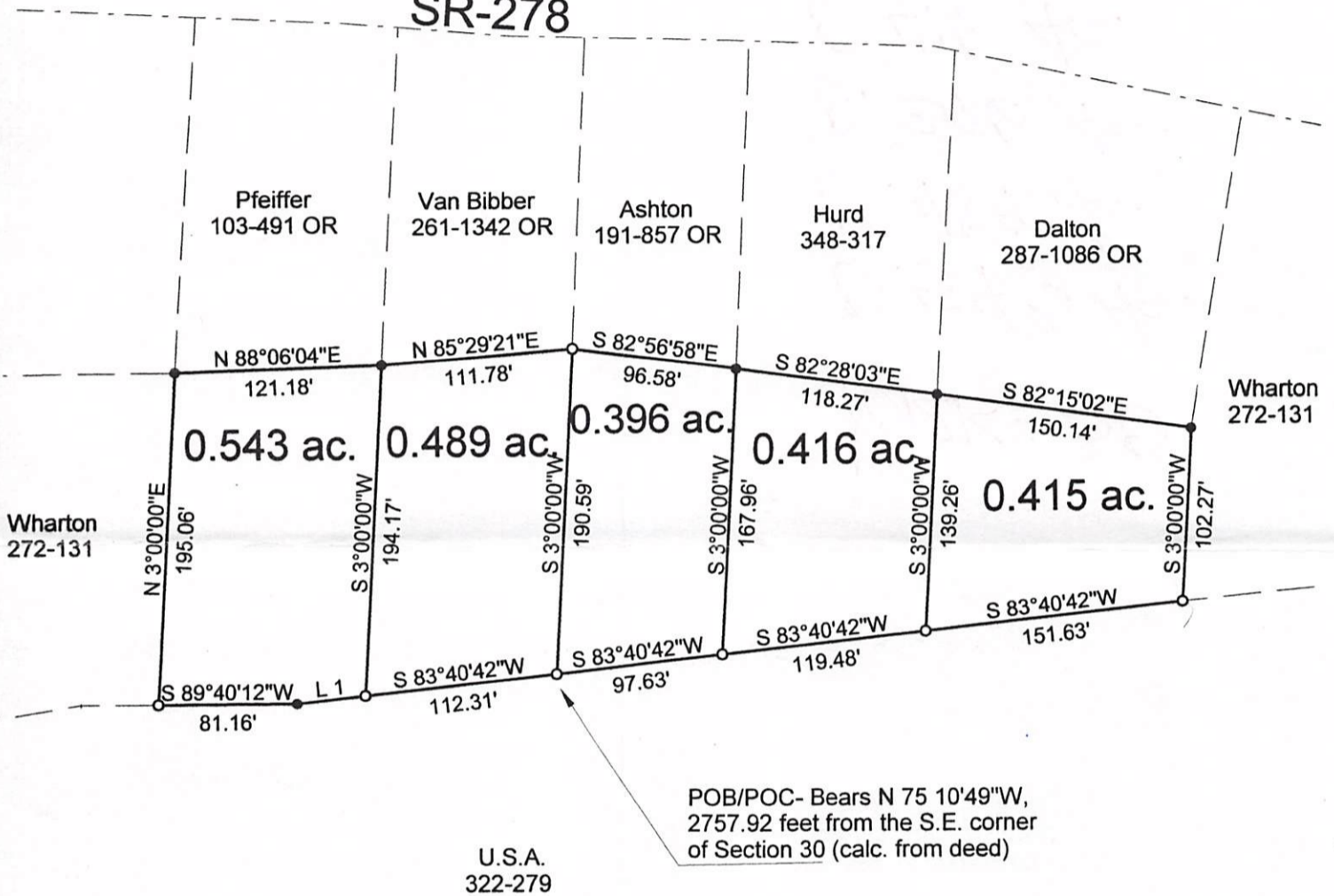




SR-278



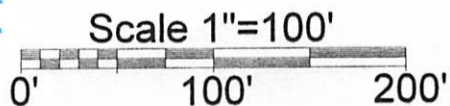
Line	Bearing	Distance
1	S 83°40'42\"W	40.24'

- = Iron Pin Set
- = Iron Pin Found

Description Checked for  
Mathematical Accuracy  
Athens County  
ENGINEER'S OFFICE

BY: J. Blaus  
DATE: 10-18-06

NOTE: The 5 tracts shown here are all transfers between adjoining owners.



PLAT OF SURVEY OF 5 TRACTS

SURVEYED FOR DALE WHARTON

SUBDIVISION —

TOWNSHIP YORK SECTION 30 TOWN 12 RANGE 1S

CORPORATION NELSONVILLE COUNTY ATHENS STATE OHIO

SCALE 1" = 100' DATE OCT. 2006

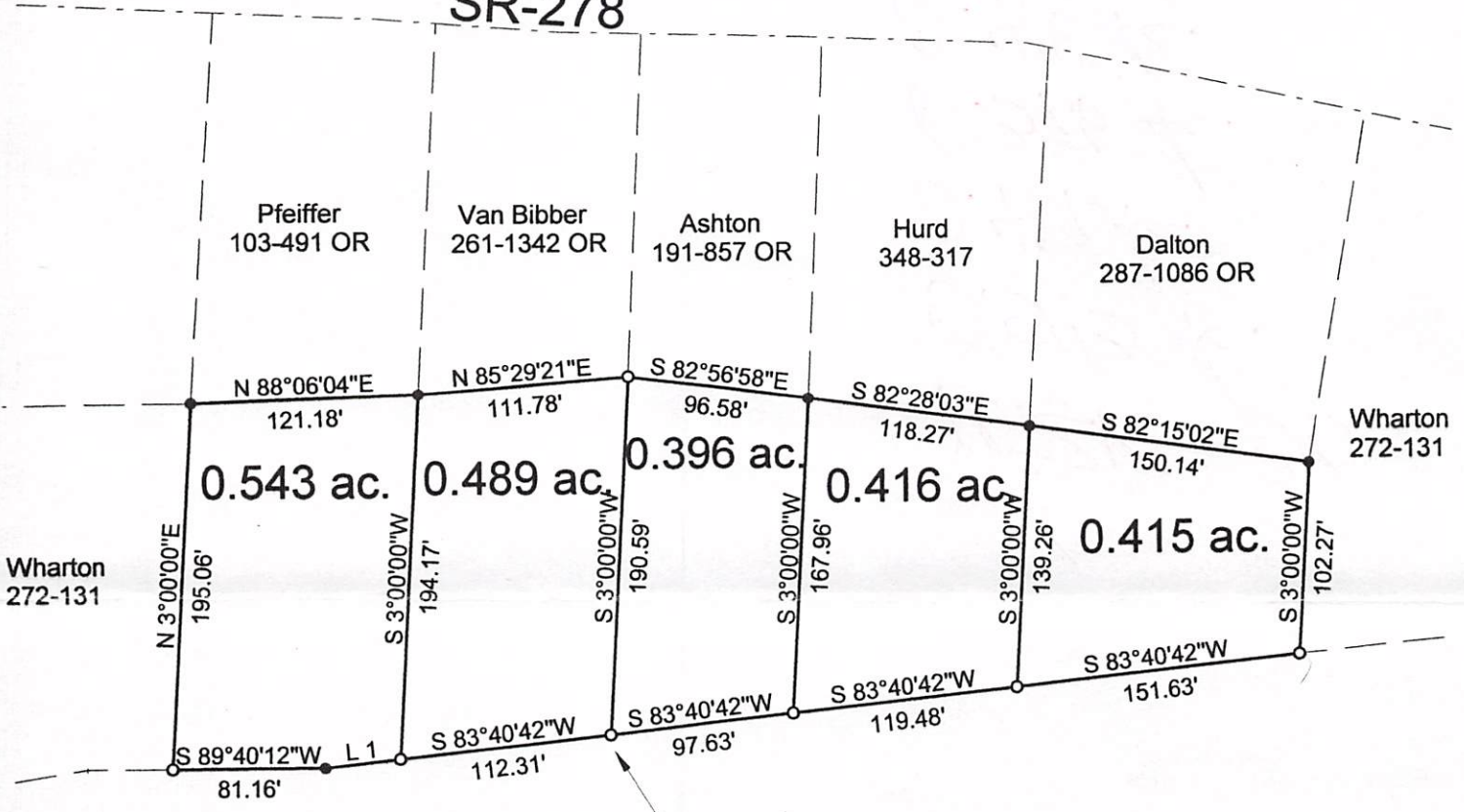
Kenneth E. Highland  
80 Fayette St.  
Nelsonville, Ohio 45764  
740-753-1264

Kenneth E. Highland S-7581





SR-278



POB/POC- Bears N 75 10'49\"W,  
2757.92 feet from the S.E. corner  
of Section 30 (calc. from deed)

U.S.A.  
322-279

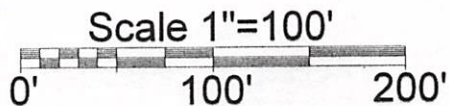
Line 1 Bearing S 83°40'42\"W Distance 40.24'

Description Checked for  
Mathematical Accuracy  
Athens County  
ENGINEER'S OFFICE

BY: *S. Klaus*  
DATE: 10-18-06

O = Iron Pin Set  
● = Iron Pin Found

NOTE: The 5 tracts shown  
here are all transfers between  
adjoining owners.



PLAT OF SURVEY OF 5 TRACTS

SURVEYED FOR DALE WHARTON

SUBDIVISION —

TOWNSHIP YORK SECTION 30 TOWN 12 RANGE 15

CORPORATION NELSONVILLE COUNTY ATHENS STATE OHIO

SCALE 1\" = 100' DATE OCT. 2006

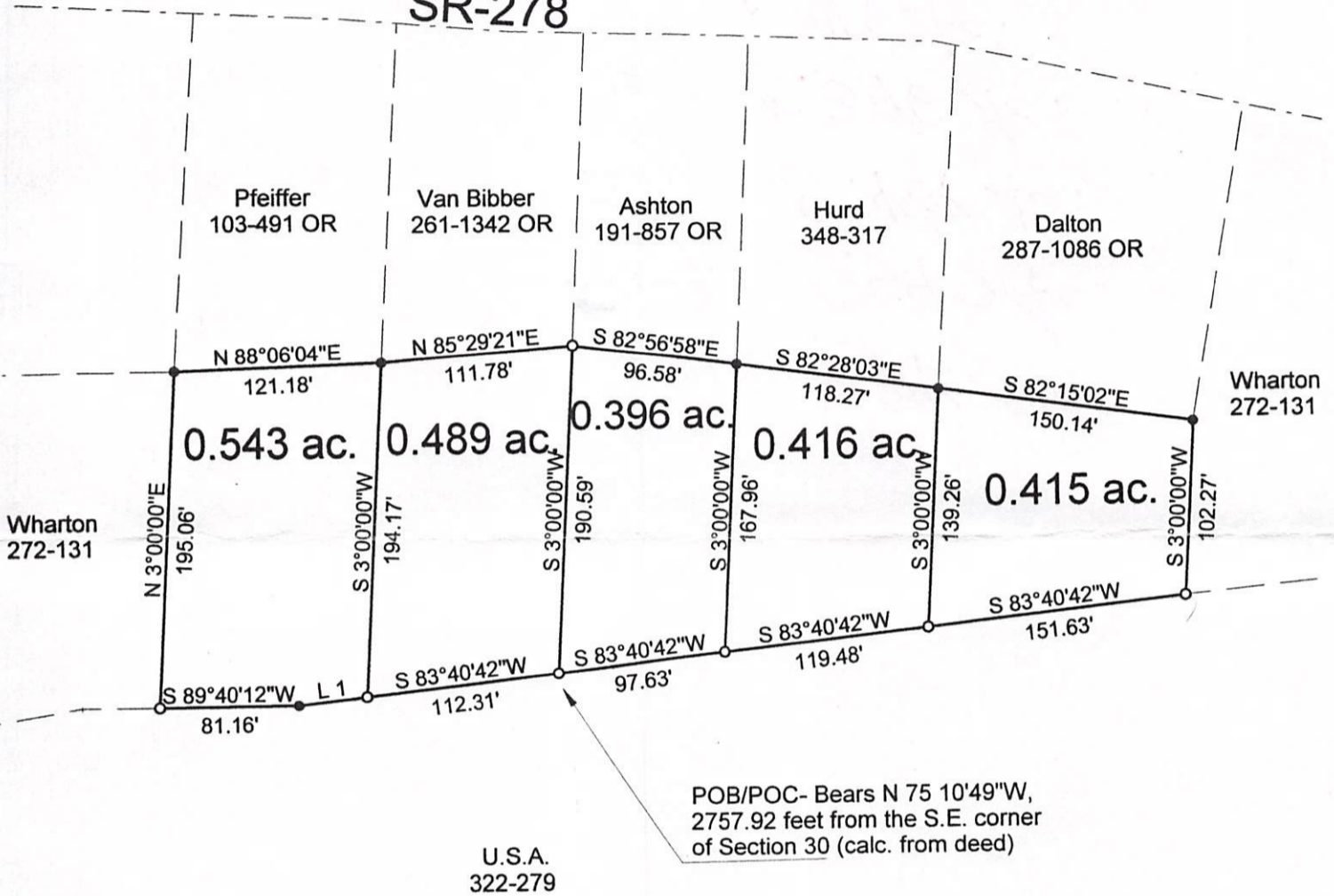
Kenneth E. Highland  
80 Fayette St.  
Nelsonville, Ohio 45764  
740-753-1264

Kenneth E. Highland S-7581





SR-278

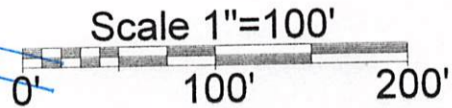


Line	Bearing	Distance
1	S 83°40'42\"W	40.24'

- = Iron Pin Set
- = Iron Pin Found

NOTE: The 5 tracts shown here are all transfers between adjoining owners.

Description Checked for  
Mathematical Accuracy  
Athens County  
ENGINEER'S OFFICE  
BY: *S. Blaus*  
DATE: *10-18-06*



PLAT OF SURVEY OF 5 TRACTS

SURVEYED FOR DALE WHARTON

SUBDIVISION —

TOWNSHIP YORK SECTION 30 TOWN 12 RANGE 15

CORPORATION NELSONVILLE COUNTY ATHENS STATE OHIO

SCALE 1" = 100' DATE OCT, 2006

Kenneth E. Highland  
80 Fayette St.  
Nelsonville, Ohio 45764  
740-753-1264

Kenneth E. Highland S-7581

