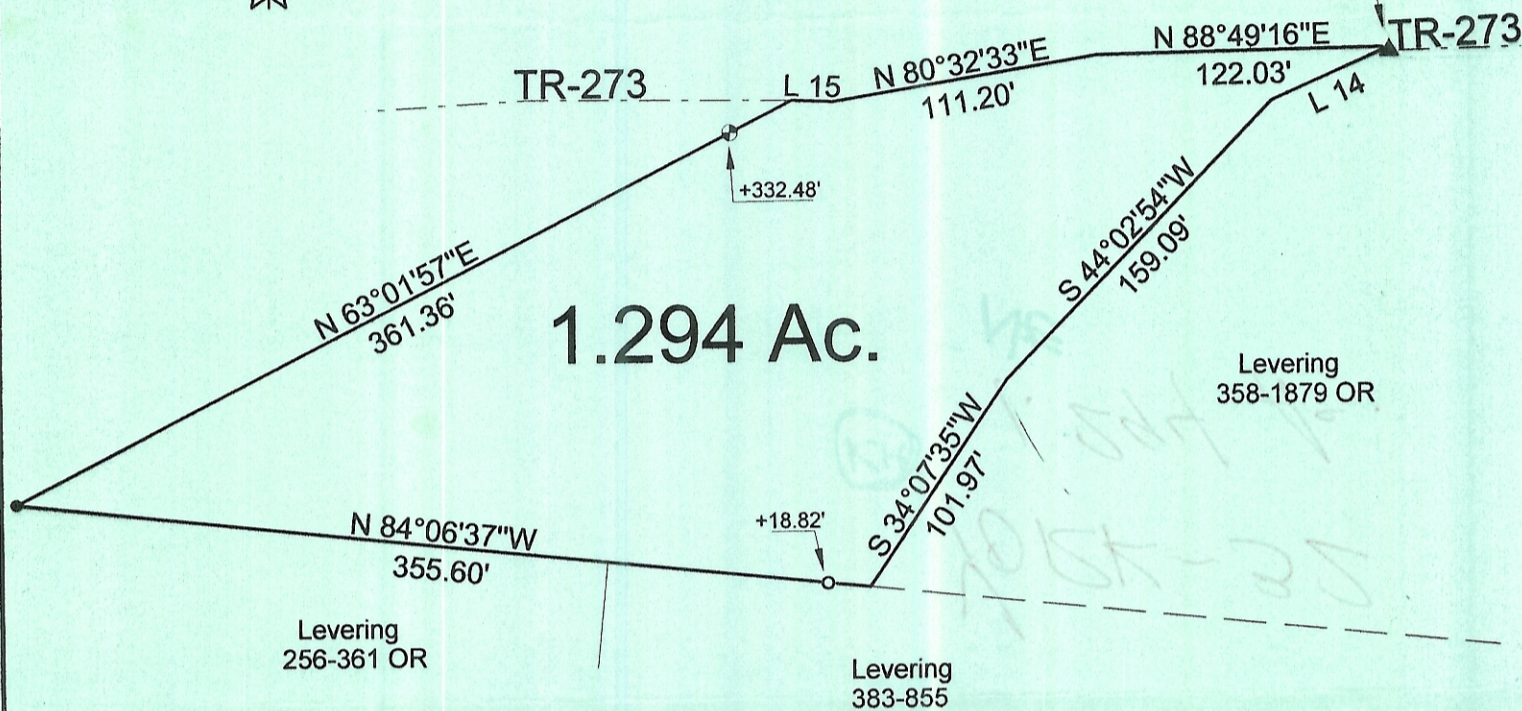




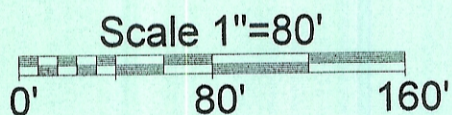
The Mead Corp.  
300-1286 OR

Railroad Spike bears  
S 34°34'15"W, 857.31'  
from the N.E. corner  
of Section 32 (calc.)



Line	Bearing	Distance
14	S 66°12'43"W	54.03'
15	S 88°00'55"E	17.23'

- =Iron Pin Set
- ▲=Railroad Spike Set
- =Iron Pin Found
- ⊕=Spike Nail found



Description Checked for  
Mathematical Accuracy  
Athens County  
ENGINEER'S OFFICE  
BY: S. Blausch  
DATE: 4-21-05

PLAT OF SURVEY OF A 1.294 Ac. TRACT

SURVEYED FOR JEFF LEVERING

SUBDIVISION —

TOWNSHIP YORK SECTION 32 TOWN 12 RANGE 1S

CORPORATION — COUNTY ATHENS STATE OHIO

SCALE 1"= 80 DATE APRIL 2005  
Kenneth E. Highland  
80 Fayette St.  
Nelsonville, Ohio 45764  
740-753-1264

Kenneth E. Highland S-7581

