

Legal Description

For

Athens County Ohio Tax Parcel No.

P01-00100601-00

Said real estate is situated in the State of Ohio, Athens County, York Twp. Section 36, Township 12 North, Range 15 West and more particularly described as follows:

The Point of Commencement (P.O.C.) being an oak tree at the Southeast corner of section 35, offset by an iron pin located N 02° 56' 19" E at a distance of 578.00 ft. :

thence beginning at the Point of Commencement (P.O.C.), N 15° 45' 18" W, a distance of 6129.108 ft. to the Point of Beginning (P.O.B.):

thence from the Point of Beginning (P.O.B.), being a found one (1) inch diameter pipe, N 28° 38' 19" E, a distance of 573.40 ft. to a USDA FS Monument,

thence S 66° 37' 41" E, a distance of 640.50 ft. along the lines of Faith Tabernacle House of Prayer, 272-601 & William Shawn Trust, 310-969or, to a USDA FS Monument,

thence S 02° 47' 19" W, a distance of 333.27 ft., along the line of William Shawn Trust, 310-969or, passing a USDA FS monument at a distance of 227.72 ft. to a point,

thence S 68° 24' 16" W, a distance of 90.37 ft. to a point,

Legal Description Pre-Approval
APPROVED
All transfers are subject to
Athens County Conveyance Standards

OCT 09 2014

Jill Thompson
Athens County Auditor



Page 2 of 2

thence S 83° 02' 36" W, a distance of 145.16 ft. to a point,
thence S 64° 59' 54" W, a distance of 215.12 ft. to a point,
thence S 68° 51' 57" W, a distance of 143.88 ft. to a point,
thence S 69° 15' 37" W, a distance of 133.43 ft. to a point,
thence S 64° 10' 20" W, a distance of 214.15 ft. to a point,
thence S 60° 59' 44" W, a distance of 56.34 ft. to a point,
thence S 31° 15' 11" W, a distance of 119.78 ft. to a point,
thence S 43° 24' 35" W, a distance of 136.92 ft. to a point,
thence S 54° 27' 58" W, a distance of 94.78 ft. to a point,

thence N 02° 56' 11" E, a distance of 412.65 ft., along the line of Bell Wolfe Ltd.,
93-366, passing a USDA FS Monument at a distance of 112.60 ft. to a USDA FS
Monument,

Thence N 44° 58' 19" E, a distance of 410.00 ft. to the Point of Beginning (P.O.B.).

Said parcel contains 13.805 acres more or less and was surveyed by Charles P.
Chapman III, Ohio Professional Surveyor No. 8331 in March 2012.

Basis of Bearing was aligned to the Jerry Cassell, P.S. survey dated 6/29/1987.

All USDA FS monuments stamped 8331.

Note: All calls are fixed and limiting.



Charles P. Chapman III, P.S. 8331

Date 3/26/12

Description Checked for
Mathematical Accuracy
Athens County
ENGINEER'S OFFICE
BY: Bruce Williams
DATE: 10/9/14

Book 506
Instrument 2120-00R

U.S.A. Plat of Athens County Ohio Tax Parcel No. P01-00100601-00, situated in York Twp., Section 36, Twp. 12 North, Range 16 West.

I certify that this survey was made at the request of a line officer at the Wayne National Forest.

By: PVA
Title: FOREST SUPERVISOR
Date: 10/14/2014

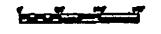
Basis of Bearing: Survey done by Jerry Cassell, P.S., on 6/29/1987.

LEGEND

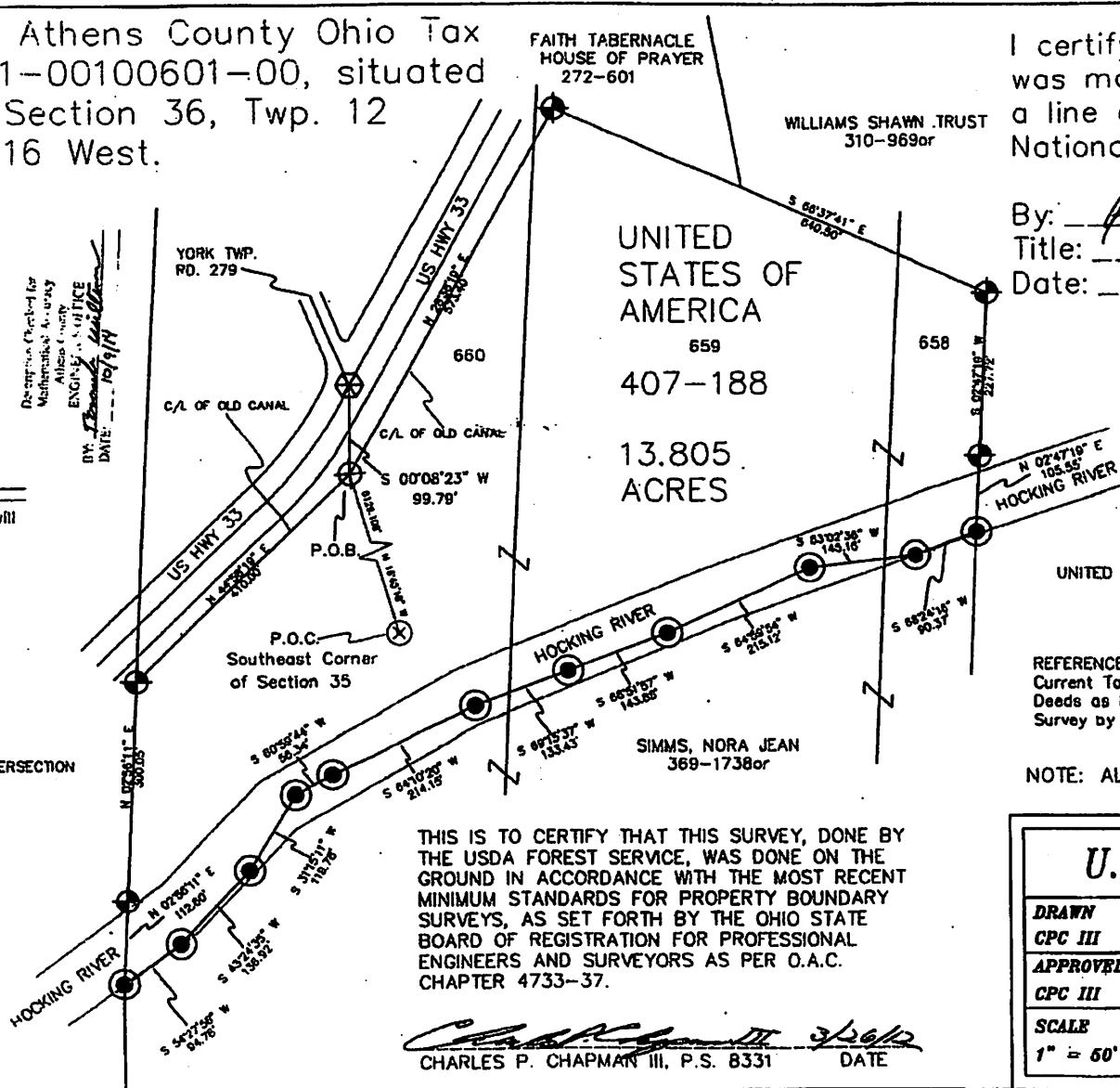
These standard symbols will be found in the drawing.

- Point
- ⊕ Iron Pipe
- ⊙ USDA FS Monument with a 3 1/2" Aluminum Cap
- ⊗ PK NAIL SET IN INTERSECTION
- ⊗ Oak Tree

Scale: One Inch (1") = 150 ft.



BELL WOLFE LTD
93-366



THIS IS TO CERTIFY THAT THIS SURVEY, DONE BY THE USDA FOREST SERVICE, WAS DONE ON THE GROUND IN ACCORDANCE WITH THE MOST RECENT MINIMUM STANDARDS FOR PROPERTY BOUNDARY SURVEYS, AS SET FORTH BY THE OHIO STATE BOARD OF REGISTRATION FOR PROFESSIONAL ENGINEERS AND SURVEYORS AS PER O.A.C. CHAPTER 4733-37.

Charles P. Chapman III
CHARLES P. CHAPMAN III, P.S. 8331 DATE 3/26/12

UNITED STATES OF AMERICA 322-279



REFERENCES
Current Tax Maps
Deeds as Noted
Survey by Jerry Cassell, P.S. 6/29/1987

NOTE: ALL CALLS ARE FIXED AND LIMITING.

U.S.A./Huntington		
DRAWN CPC III	DATE 03/26/12	Huntington National Bank, Trustee, transfer to U.S.A. (DONATION TRACT)
APPROVED CPC III	DATE 03/26/12	
SCALE 1" = 50'	SHEET 1 of 1	PROJECT NO. P01-00100601-00