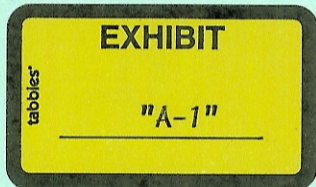


**HIGHLAND SURVEYING Ltd.**  
Registered Professional Land Surveyor

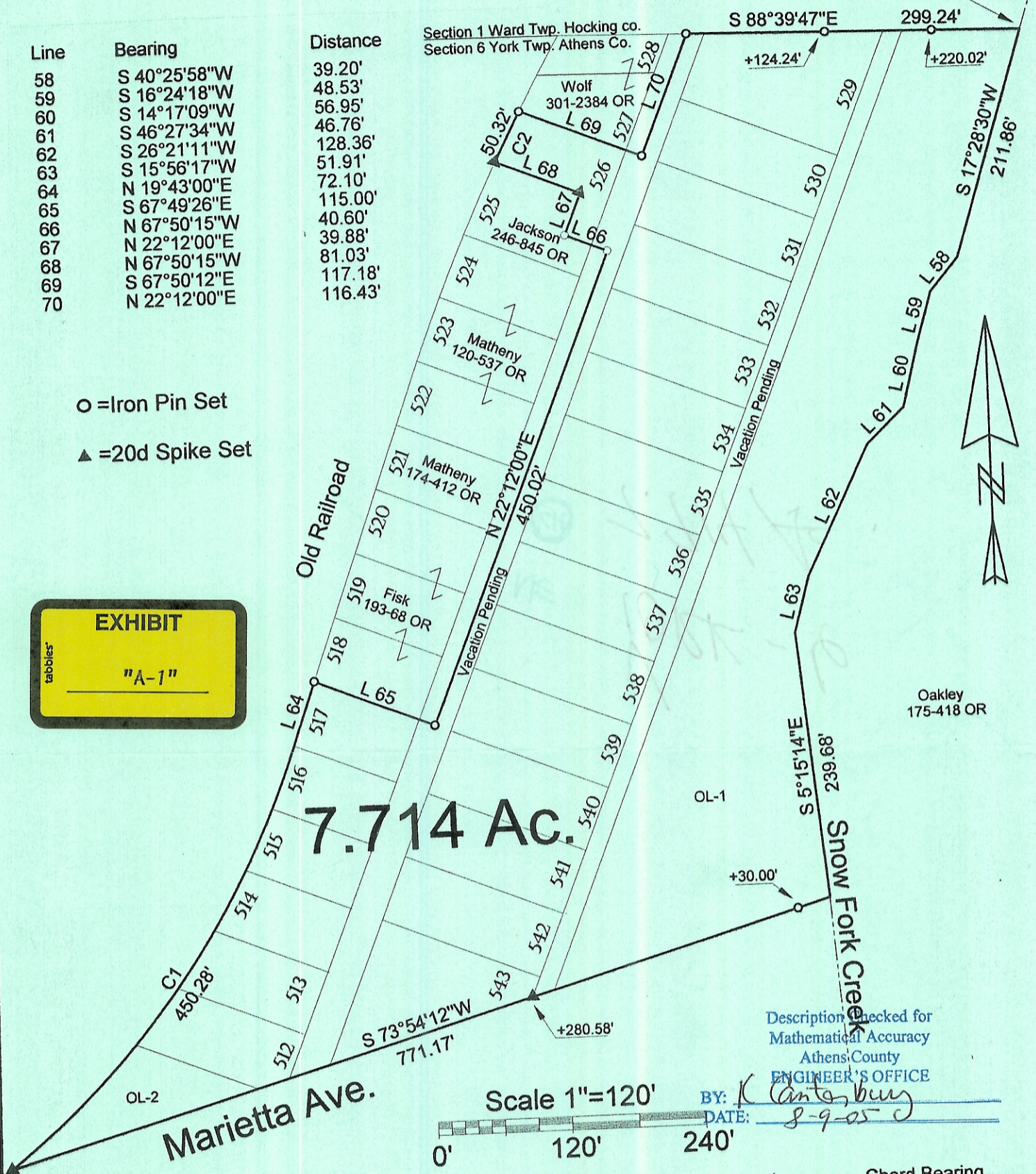
P.O.B. bears N 88°39'47"W,  
771.83' from N.E. corner of  
Section 6

Line	Bearing	Distance
58	S 40°25'58"W	39.20'
59	S 16°24'18"W	48.53'
60	S 14°17'09"W	56.95'
61	S 46°27'34"W	46.76'
62	S 26°21'11"W	128.36'
63	S 15°56'17"W	51.91'
64	N 19°43'00"E	72.10'
65	S 67°49'26"E	115.00'
66	N 67°50'15"W	40.60'
67	N 22°12'00"E	39.88'
68	N 67°50'15"W	81.03'
69	S 67°50'12"E	117.18'
70	N 22°12'00"E	116.43'

○ = Iron Pin Set  
▲ = 20d Spike Set



Section 1 Ward Twp. Hocking co.  
Section 6 York Twp. Athens Co.



**7.714 Ac.**

Scale 1"=120'  
0' 120' 240'

Description checked for  
Mathematical Accuracy  
Athens County  
ENGINEER'S OFFICE

BY: K. Canterbury  
DATE: 8-9-05

Curve	Delta Angle	Radius	Arc	Tangent	Chord	Chord Bearing
1	32°42'13"	788.87	450.28	231.46	444.19	N 36°17'28"E
2	1°31'47"	1884.85	50.32	25.16	50.32	N 27°16'22"E

PLAT OF SURVEY OF A 7.714 AC. TRACT  
 SURVEYED FOR FIRST NATIONAL BANK OF NELSONVILLE  
 SUBDIVISION OL 1 & 2, LOTS BUCHTEL  
 TOWNSHIP YORK SECTION 6 TOWN 12 RANGE 15  
 CORPORATION BUCHTEL COUNTY ATHENS STATE OHIO  
 SCALE 1"= 120' DATE AUG 2005



Kenneth E. Highland  
80 Fayette St.  
Nelsonville, Ohio 45764  
740-753-1264

*[Signature]*  
Kenneth E. Highland S-7581