

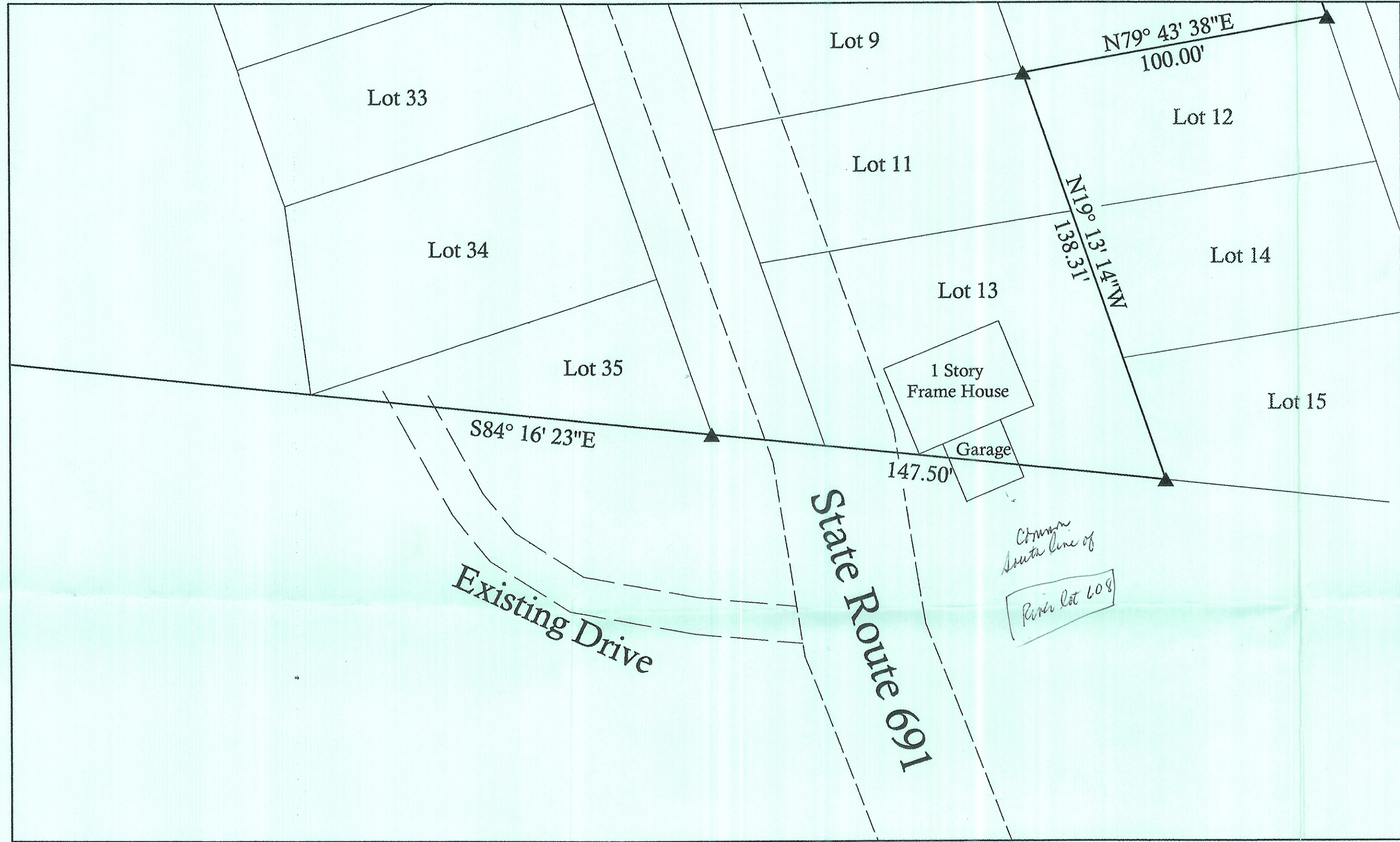
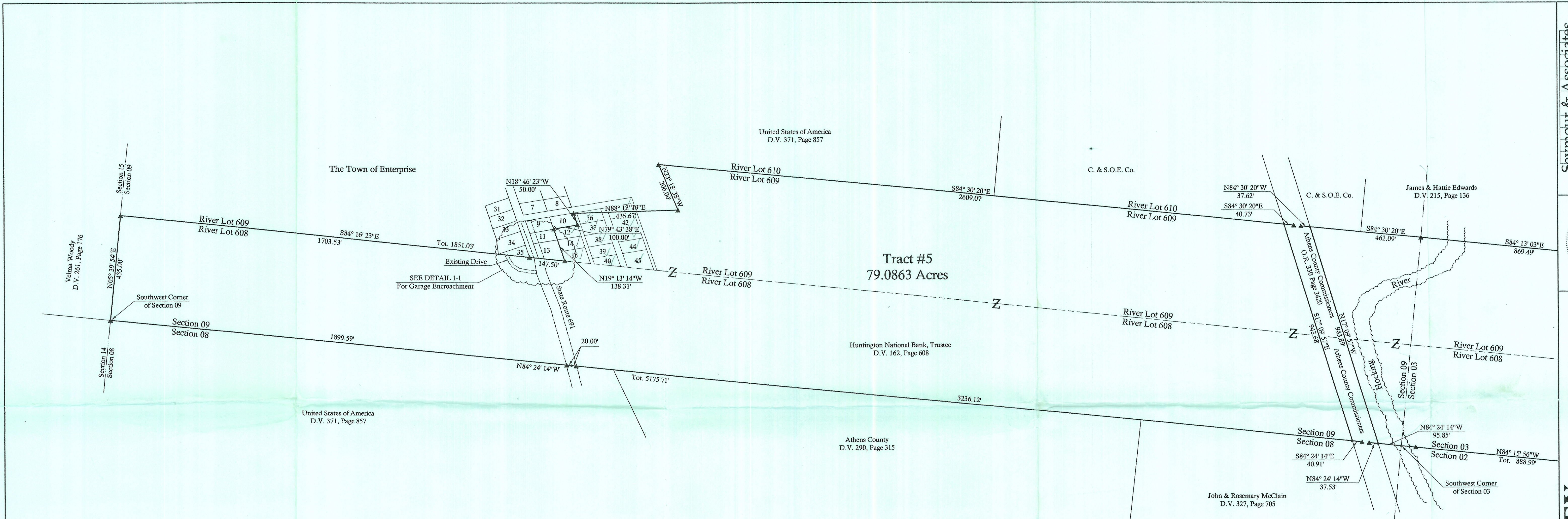
PLAT OF SURVEY

SITUATED IN THE STATE OF OHIO, COUNTY OF ATHENS, TOWNSHIP OF YORK,
 AND BEING A PART OF RIVER LOTS 609, 608 & 606 IN SECTIONS 2, 3 & 9,
 TOWNSHIP 12, RANGE 15

REVISIONS

NO.	DATE	BY	APP'D
1	04-19-07	WFB	
2		WFB	

SHEET 1/2



DETAIL 1-1
 Scale 1"=30'

REFERENCES:

County tax maps
 Deeds as noted
 Previous surveys

BASIS OF BEARINGS:

Bearings derived from monumentation found on the East line of Section 03 as bearing South 05 degrees 39 minutes 54 seconds West and are for the determination of angles only.

Description Checked for
 Mathematical Accuracy
 Athens County
 ENGINEER'S OFFICE
 BY: S. Blausen
 DATE: 5-9-07

George F. Seymour
 GEORGE F. SEYMOUR
 OHIO PROFESSIONAL SURVEYOR NO. 6044
 ©2007 SEYMOUR & ASSOCIATES

I HEREBY CERTIFY THAT THIS PLAT WAS PREPARED FROM AN ACTUAL FIELD SURVEY OF THE PREMISES IN APRIL OF 2007 AND FROM EXISTING PUBLIC RECORDS AND THAT SAID PLAT CORRECTLY SHOWS THE LIMITS OF THE PARCEL TO BE CONVEYED.
 THIS CERTIFICATION WAS MADE BY ME ON THIS 26 DAY OF APRIL, 2007.

LEGEND

- Point
- ▲ 5/8" x 30" iron pin with 1-1/4" plastic ID cap stamped SEYMOUR & ASSOC. set
- △ 5/8" iron pin with 1-1/4" plastic ID cap stamped SEYMOUR & ASSOC. found
- 5/8" iron pin with plastic ID cap stamped "BRANER" found
- ⊙ 5/8" iron pin found
- ⊗ 5/8" iron pipe found
- ⊕ MAG nail set
- ⊖ MAG nail found
- ⊙ PK nail found
- Stone found
- Mine Rail found

