



SOUTHEASTERN LAND SURVEYS

LEONARD F. SWOYER
REGISTERED PROFESSIONAL LAND SURVEYOR

3428 Pleasant Hill Road
Athens, Ohio 45701
740/593-8701

TRACT 1

Situated in Lease Lot 3 of Section 23, Alexander Township, Town 8, Range 14, Athens County, Ohio and described as follows:

Commencing at a 12" x 4" native stone found at the southwest corner of Lease Lot 1, Section 29, Alexander Township; thence along the south line of Lease Lot 1 of Section 29, South 85 Degrees 16 Minutes 37 Seconds East for a distance of 1205.16 feet to a set iron pin, THE TRUE POINT OF BEGINNING of this tract and the northwest corner of Lease Lot 3 of said Section 23; thence along the north line of Lease Lot 3, South 84 Degrees 40 Minutes 46 Seconds East (passing a set iron pin at 1394.42 feet) for a total distance of 1424.42 feet to a point in the flow line of the East Branch of Margaret's Creek; thence along the flow line of the East Branch of Margaret's Creek for the following twenty-one bearings and distances: 1) South 06 Degrees 45 Minutes 02 Seconds East for a distance of 154.71 feet to a point; 2) thence South 00 Degrees 12 Minutes 11 Seconds East for a distance of 183.41 feet to a point; 3) thence South 00 Degrees 25 Minutes 48 Seconds East for a distance of 105.99 feet to a point; 4) thence South 00 Degrees 15 Minutes 20 Seconds East for a distance of 172.47 feet to a point; 5) thence South 00 Degrees 03 Minutes 47 Seconds East for a distance of 188.17 feet to a point; 6) thence South 10 Degrees 15 Minutes 18 Seconds West for a distance of 91.50 feet to a point; 7) thence South 24 Degrees 30 Minutes 13 Seconds West for a distance of 117.22 feet to a point; 8) thence South 01 Degrees 04 Minutes 36 Seconds West for a distance of 62.10 feet to a point; 9) thence South 55 Degrees 39 Minutes 33 Seconds East for a distance of 57.64 feet to a point; 10) thence South 88 Degrees 44 Minutes 34 Seconds East for a distance of 96.67 feet to a point; 11) thence South 58 Degrees 07 Minutes 32 Seconds East for a distance of 85.00 feet to a point; 12) thence South 62 Degrees 51 Minutes 53 Seconds

PROPERTY

CONSTRUCTION

Description checked for
Mathematical Accuracy
ATHENS COUNTY
ENGINEER'S OFFICE
BY: S. Blausen
DATE: 11-29-01

SUBDIVISIONS

30

ALX # 23

East for a distance of 164.93 feet to a point; 13) thence South 67 Degrees 02 Minutes 54 Seconds East for a distance of 78.26 feet to a point; 14) thence North 28 Degrees 59 Minutes 16 Seconds East for a distance of 101.50 feet to a point; 15) thence North 66 Degrees 44 Minutes 18 Seconds East for a distance of 50.72 feet to a point; 16) thence North 83 Degrees 59 Minutes 31 Seconds East for a distance of 58.34 feet to a point; 17) thence South 61 Degrees 37 Minutes 30 Seconds East for a distance of 66.40 feet to a point; 18) thence South 56 Degrees 18 Minutes 27 Seconds East for a distance of 109.75 feet to a point; 19) thence South 41 Degrees 05 Minutes 12 Seconds West for a distance of 87.97 feet to a point; 20) thence South 57 Degrees 00 Minutes 27 Seconds East for a distance of 88.62 feet to a point; 21) thence South 47 Degrees 34 Minutes 04 Seconds East for a distance of 26.44 feet to a point; thence leaving said creek, on a new line, North 84 Degrees 21 Minutes 40 Seconds West (passing a set iron pin at 60.23 feet) for a total distance of 916.86 feet to a set iron pin at the northeast corner of a 47.54 acre tract described in Volume 260, Page 1063, Athens County Official Records; thence continuing along the North line of said 47.54 acre tract, North 84 Degrees 21 Minutes 40 Seconds West for a distance of 1362.24 feet to a 6" x 2" found, broken limestone in the west line of Lease Lot 3 at the northwest corner of said 47.54 acre tract; thence along the west line of said Lease Lot 3 and the east line of a 109.10 acre tract described in Volume 370, Page 697, Athens County Deed Records, North 05 Degrees 26 Minutes 04 Seconds East for a distance of 1271.51 feet to the POINT OF BEGINNING, containing 46.168 acres and being a part of a 98.75 acre tract of land described in Volume 307, Page 717, Athens County Deed Records.

Note: Unless otherwise noted all set iron pins are 5/8" in diameter rebar, 30 inches in length and capped with a plastic identification marker inscribed L. F. Swoyer P.S. 6765.

The above description was prepared under the supervision of Leonard F. Swoyer, Jr., Registered Professional Land Surveyor Number 6765 and based

on a field survey performed by Southeastern Land Surveys dated October 25, 2001.

Subject to all easements and right of ways of record.

Thursday, November 29, 2001 10:15 am.

Pg: 1

Registered to:

ATHENS COUNTY ENGINEER DEPT.

File Name:

C:\LOTSPL~1\ALEX\S23\C17-46-1.ZAK

Point	Direction	Distance	Northing	Easting	Elevation
Database opened: Thursday, November 29, 2001 9:44 am.					
Assigned point					
1			5000.00000	5000.00000	0.000
Start					
1			5000.00000	5000.00000	0.000
Raw:	s84.4046e	1424.42			
TR	S 84°40'46.0" E	1424.420			
2			4867.91665	6418.28288	0.000
Raw:	s06.4502e	154.71			
TR	S 6°45'02.0" E	154.710			
3			4714.27921	6436.46858	0.000
Raw:	s00.1211e	183.41			
TR	S 0°12'11.0" E	183.410			
4			4530.87036	6437.11858	0.000
Raw:	s00.2548e	105.99			
TR	S 0°25'48.0" E	105.990			
5			4424.88335	6437.91402	0.000
Raw:	s00.1520e	172.47			
TR	S 0°15'20.0" E	172.470			
6			4252.41506	6438.68328	0.000
Raw:	s00.0347e	188.17			
TR	S 0°03'47.0" E	188.170			
7			4064.24517	6438.89037	0.000
Raw:	s10.1518w	91.50			
TR	S 10°15'18.0" W	91.500			
8			3974.20687	6422.60068	0.000
Raw:	s24.3013w	117.22			
TR	S 24°30'13.0" W	117.220			
9			3867.54428	6373.98361	0.000
Raw:	s01.0436w	62.10			
TR	S 1°04'36.0" W	62.100			
10			3805.45524	6372.81674	0.000
Raw:	s55.3933e	57.64			
TR	S 55°39'33.0" E	57.640			
11			3772.93967	6420.40988	0.000
Raw:	s88.4434e	96.67			
TR	S 88°44'34.0" E	96.670			
12			3770.81864	6517.05661	0.000
Raw:	s58.0732e	85.00			
TR	S 58°07'32.0" E	85.000			
13			3725.93358	6589.23923	0.000
Raw:	s62.5153e	164.93			
TR	S 62°51'53.0" E	164.930			
14			3650.71017	6736.01574	0.000
Raw:	s67.0254e	78.26			
TR	S 67°02'54.0" E	78.260			
15			3620.19233	6808.08022	0.000
Raw:	n28.5916e	101.50			
TR	N 28°59'16.0" E	101.500			
16			3708.97673	6857.26946	0.000
Raw:	n66.4418e	50.72			

Registered to:

ATHENS COUNTY ENGINEER DEPT.

File Name:

C:\LOTSPL~1\ALEX\S23\C17-46-1.ZAK

Point	Direction	Distance	Northing	Easting	Elevation
TR	N 66°44'18.0" E	50.720			
17			3729.00762	6903.86647	0.000
Raw:	n83.5931e	58.34			
TR	N 83°59'31.0" E	58.340			
18			3735.11397	6961.88602	0.000
Raw:	s61.3730e	66.40			
TR	S 61°37'30.0" E	66.400			
19			3703.55801	7020.30846	0.000
Raw:	s56.1827e	109.75			
TR	S 56°18'27.0" E	109.750			
20			3642.67579	7111.62339	0.000
Raw:	s41.0512w	87.97			
TR	S 41°05'12.0" W	87.970			
21			3576.37136	7053.80952	0.000
Raw:	s57.0027e	88.62			
TR	S 57°00'27.0" E	88.620			
22			3528.11518	7128.13883	0.000
Raw:	s47.3404e	26.44			
TR	S 47°34'04.0" E	26.440			
23			3510.27565	7147.65356	0.000
Raw:	n84.2140w	916.86			
TR	N 84°21'40.0" W	916.860			
24			3600.36482	6235.23030	0.000
Raw:	n84.2140w	1362.24			
TR	N 84°21'40.0" W	1362.240			
25			3734.21631	4879.58226	0.000
Raw:	n05.2604e	1271.51			
TR	N 5°26'04.0" E	1271.510			
26			5000.01114	5000.00290	0.000
IN	S 14°35'59.0" W	0.012			
1			5000.00000	5000.00000	0.000

Area = 2011049.358 Sq. Feet or 46.167 Acres

Database Saved: Thursday, November 29, 2001 10:15 am.



SOUTHEASTERN LAND SURVEYS

LEONARD F. SWOYER
REGISTERED PROFESSIONAL LAND SURVEYOR

3428 Pleasant Hill Road
Athens, Ohio 45701
740/593-8701

TRACT 2

Situated in Lease Lot 3 and Lease Lot 4 of Section 23, Alexander Township, Town 8, Range 14, Athens County, Ohio and described as follows:

Commencing at a 12" x 4" native stone found at the southwest corner of Lease Lot 1, Section 29, Alexander Township; thence along the south line of Lease Lot 1 of Section 29, South 85 Degrees 16 Minutes 37 Seconds East for a distance of 1205.16 feet to a set iron pin, the northwest corner of Lease Lot 3 of Section 23; thence along the north line of said Lease Lot 3, South 84 Degrees 40 Minutes 46 Seconds East for a distance of 1424.42 feet to a point in the flow line of the East Branch of Margaret's Creek, THE TRUE POINT OF BEGINNING of this tract; thence continuing along the north line of said Lease Lot 3, South 84 Degrees 40 Minutes 46 Seconds East (passing a set iron pin at 564.25 feet and at 1051.90 feet) for a total distance of 1095.13 feet to a point in the center of Athens County Road 17; thence along the center of said road for the following three bearings and distances: 1) South 33 Degrees 29 Minutes 37 Seconds East for a distance of 133.45 feet to a point; 2) thence South 33 Degrees 49 Minutes 03 Seconds East for a distance of 213.87 feet to a point; 3) thence South 34 Degrees 51 Minutes 25 Seconds East (passing the east line of Lease Lot 3 and the west line of Lease Lot 4) for a total distance of 294.99 feet to a point; thence leaving said road and along the east line of Grantor's tract and the west line of a tract described in Volume 273, Page 1033, Athens County Official Records, South 36 Degrees 17 Minutes 26 Seconds West (passing a found iron pin at 12.10 feet, passing the west line of Lease Lot 4 and the East line of Lease Lot 3, and passing a found iron pin at 1005.87 feet) for a total distance of 1026.19 feet to a point in the flow line of the East Branch of Margaret's Creek; thence along the flow line of the East

PROPERTY

CONSTRUCTION
35

Description checked for
Mathematical Accuracy
ATHENS COUNTY
ENGINEER'S OFFICE
BY: S. Blaise
DATE: 11-29-01

SUBDIVISIONS

Branch of Margaret's Creek for the following twenty-two bearings and distances: 1) North 49 Degrees 37 Minutes 03 Seconds West for a distance of 61.71 feet to a point; 2) thence North 47 Degrees 34 Minutes 04 Seconds West for a distance of 118.47 feet to a point; 3) thence North 57 Degrees 00 Minutes 27 Seconds West for a distance of 88.62 feet to a point; 4) thence North 41 Degrees 05 Minutes 12 Seconds East for a distance of 87.97 feet to a point; 5) thence North 56 Degrees 18 Minutes 27 Seconds West for a distance of 109.75 feet to a point; 6) thence North 61 Degrees 37 Minutes 30 Seconds West for a distance of 66.40 feet to a point; 7) thence South 83 Degrees 59 Minutes 31 Seconds West for a distance of 58.34 feet to a point; 8) thence South 66 Degrees 44 Minutes 18 Seconds West for a distance of 50.72 feet to a point; 9) thence South 28 Degrees 59 Minutes 16 Seconds West for a distance of 101.50 feet to a point; 10) thence North 67 Degrees 02 Minutes 54 Seconds West for a distance of 78.26 feet to a point; 11) thence North 62 Degrees 51 Minutes 53 Seconds West for a distance of 164.93 feet to a point; 12) thence North 58 Degrees 07 Minutes 32 Seconds West for a distance of 85.00 feet to point; 13) thence North 88 Degrees 44 Minutes 34 Seconds West for a distance of 96.67 feet to a point; 14) thence North 55 Degrees 39 Minutes 33 Seconds West for a distance of 57.64 feet to point; 15) thence North 01 Degrees 04 Minutes 36 Seconds East for a distance of 62.10 feet to a point; 16) thence North 24 Degrees 30 Minutes 13 Seconds East for a distance of 117.22 feet to a point; 17) thence North 10 Degrees 15 Minutes 18 Seconds East for a distance of 91.50 feet to a point; 18) thence North 00 Degrees 03 Minutes 47 Seconds West for a distance of 188.17 feet to a point; 19) thence North 00 Degrees 15 Minutes 20 Seconds West for a distance of 172.47 feet to a point; 20) thence North 00 Degrees 25 Minutes 48 Seconds West for a distance of 105.99 feet to a point; 21) thence North 00 Degrees 12 Minutes 11 Seconds West for a distance of 183.41 feet to a point; 22) thence North 06 Degrees 45 Minutes 02 Seconds West for a distance of 154.71 feet to POINT OF BEGINNING, containing 33.423 acres of which 32.242 acres are in Lease Lot 3 and 1.181 acres are in Lease Lot 4, and being a part of a 98.75 acre tract of land described in Volume 307, Page

717, Athens County Deed Records and a part of an 11.6194 acre tract of land described in Volume 4, Page 738, Athens County Official Records.

Note:

Unless otherwise noted all set iron pins are 5/8" in diameter rebar, 30 inches in length and capped with a plastic identification marker inscribed L. F. Swoyer P.S. 6765.

The above description was prepared under the supervision of Leonard F. Swoyer, Jr., Registered Professional Land Surveyor Number 6765 and based on a field survey performed by Southeastern Land Surveys dated October 25, 2001.

Subject to all easements and right of ways of record.

Thursday, November 29, 2001 10:23 am.

Pg: 1

Registered to:

ATHENS COUNTY ENGINEER DEPT.

File Name:

C:\LOTSPL~1\ALEX\S23\C17-33-4.ZAK

Point	Direction	Distance	Northing	Easting	Elevation
Database opened: Thursday, November 29, 2001 10:15 am.					
Coordinates were assigned for point 1.					
Go to					
1			5000.00000	5000.00000	0.000
Raw:	s84.4046e	1095.13			
TR	S 84°40'46.0" E	1095.130			
2			4898.45099	6090.41163	0.000
Raw:	s33.2937e	133.45			
TR	S 33°29'37.0" E	133.450			
3			4787.16072	6164.05521	0.000
Raw:	s33.4903e	213.87			
TR	S 33°49'03.0" E	213.870			
4			4609.47442	6283.08443	0.000
Raw:	s34.5125e	294.99			
TR	S 34°51'25.0" E	294.990			
5			4367.41105	6451.67989	0.000
Raw:	s36.1726w	1026.19			
TR	S 36°17'26.0" W	1026.190			
6			3540.27538	5844.29822	0.000
Raw:	n49.3703w	61.71			
TR	N 49°37'03.0" W	61.710			
7			3580.25650	5797.29147	0.000
Raw:	n47.3404w	118.47			
TR	N 47°34'04.0" W	118.470			
8			3660.19029	5709.85161	0.000
Raw:	n57.0027w	88.62			
TR	N 57°00'27.0" W	88.620			
9			3708.44648	5635.52231	0.000
Raw:	n41.0512e	87.97			
TR	N 41°05'12.0" E	87.970			
10			3774.75090	5693.33618	0.000
Raw:	n56.1827w	109.75			
TR	N 56°18'27.0" W	109.750			
11			3835.63313	5602.02124	0.000
Raw:	n61.3730w	66.40			
TR	N 61°37'30.0" W	66.400			
12			3867.18909	5543.59880	0.000
Raw:	s83.5931w	58.34			
TR	S 83°59'31.0" W	58.340			
13			3861.08274	5485.57925	0.000
Raw:	s66.4418w	50.72			
TR	S 66°44'18.0" W	50.720			
14			3841.05184	5438.98224	0.000
Raw:	s28.5916w	101.50			
TR	S 28°59'16.0" W	101.500			
15			3752.26745	5389.79300	0.000
Raw:	n67.0254w	78.26			
TR	N 67°02'54.0" W	78.260			
16			3782.78528	5317.72852	0.000
Raw:	n62.5153w	164.93			
TR	N 62°51'53.0" W	164.930			

Thursday, November 29, 2001 10:23 am.

Pg: 2

Registered to:

ATHENS COUNTY ENGINEER DEPT.

File Name:

C:\LOTSPL~1\ALEX\S23\C17-33-4.ZAK

	Point	Direction	Distance	Northing	Easting	Elevation
	17			3858.00869	5170.95201	0.000
Raw:	n58.0732w		85.00			
TR	N 58°07'32.0" W		85.000			
	18			3902.89376	5098.76939	0.000
Raw:	n88.4434w		96.67			
TR	N 88°44'34.0" W		96.670			
	19			3905.01479	5002.12266	0.000
Raw:	n55.3933w		57.64			
TR	N 55°39'33.0" W		57.640			
	20			3937.53035	4954.52952	0.000
Raw:	n01.0436e		62.10			
TR	N 1°04'36.0" E		62.100			
	21			3999.61939	4955.69640	0.000
Raw:	n24.3013e		117.22			
TR	N 24°30'13.0" E		117.220			
	22			4106.28199	5004.31346	0.000
Raw:	n10.1518e		91.50			
TR	N 10°15'18.0" E		91.500			
	23			4196.32029	5020.60315	0.000
Raw:	n00.0347w		1188.17			
TR	N 0°03'47.0" W		1188.170			
	24			5384.48957	5019.29554	0.000

Editing Raw Data

Traverse Modified

Rerunning Modified Traverse

Inversing Adjusted Points

Go to

	1			5000.00000	5000.00000	0.000
Raw:	S84.4046E		1095.13			
TR	S 84°40'46.0" E		1095.130			
	2			4898.45099	6090.41163	0.000
Raw:	S33.2937E		133.45			
TR	S 33°29'37.0" E		133.450			
	3			4787.16072	6164.05521	0.000
Raw:	S33.4903E		213.87			
TR	S 33°49'03.0" E		213.870			
	4			4609.47442	6283.08443	0.000
Raw:	S34.5125E		294.99			
TR	S 34°51'25.0" E		294.990			
	5			4367.41105	6451.67989	0.000
Raw:	S36.1726W		1026.19			
TR	S 36°17'26.0" W		1026.190			
	6			3540.27538	5844.29822	0.000
Raw:	N49.3703W		61.71			
TR	N 49°37'03.0" W		61.710			
	7			3580.25650	5797.29147	0.000
Raw:	N47.3404W		118.47			
TR	N 47°34'04.0" W		118.470			
	8			3660.19029	5709.85161	0.000

Thursday, November 29, 2001 10:23 am.

Pg: 3

Registered to:

ATHENS COUNTY ENGINEER DEPT.

File Name:

C:\LOTSPL~1\ALEX\S23\C17-33-4.ZAK

	Point	Direction	Distance	Northing	Easting	Elevation
Raw:		N57.0027W	88.62			
TR		N 57°00'27.0" W	88.620			
	9			3708.44648	5635.52231	0.000
Raw:		N41.0512E	87.97			
TR		N 41°05'12.0" E	87.970			
	10			3774.75090	5693.33618	0.000
Raw:		N56.1827W	109.75			
TR		N 56°18'27.0" W	109.750			
	11			3835.63313	5602.02124	0.000
Raw:		N61.3730W	66.4			
TR		N 61°37'30.0" W	66.400			
	12			3867.18909	5543.59880	0.000
Raw:		S83.5931W	58.34			
TR		S 83°59'31.0" W	58.340			
	13			3861.08274	5485.57925	0.000
Raw:		S66.4418W	50.72			
TR		S 66°44'18.0" W	50.720			
	14			3841.05184	5438.98224	0.000
Raw:		S28.5916W	101.5			
TR		S 28°59'16.0" W	101.500			
	15			3752.26745	5389.79300	0.000
Raw:		N67.0254W	78.26			
TR		N 67°02'54.0" W	78.260			
	16			3782.78528	5317.72852	0.000
Raw:		N62.5153W	164.93			
TR		N 62°51'53.0" W	164.930			
	17			3858.00869	5170.95201	0.000
Raw:		N58.0732W	85			
TR		N 58°07'32.0" W	85.000			
	18			3902.89376	5098.76939	0.000
Raw:		N88.4434W	96.67			
TR		N 88°44'34.0" W	96.670			
	19			3905.01479	5002.12266	0.000
Raw:		N55.3933W	57.64			
TR		N 55°39'33.0" W	57.640			
	20			3937.53035	4954.52952	0.000
Raw:		N01.0436E	62.1			
TR		N 1°04'36.0" E	62.100			
	21			3999.61939	4955.69640	0.000
Raw:		N24.3013E	117.22			
TR		N 24°30'13.0" E	117.220			
	22			4106.28199	5004.31346	0.000
Raw:		N10.1518E	91.5			
TR		N 10°15'18.0" E	91.500			
	23			4196.32029	5020.60315	0.000
Raw:		N00.0347W	188.17			
TR		N 0°03'47.0" W	188.170			
	24			4384.49018	5020.39607	0.000

Open Traverse - No Area

Thursday, November 29, 2001 10:23 am.

Pg: 4

Registered to:

ATHENS COUNTY ENGINEER DEPT.

File Name:

C:\LOTSPL~1\ALEX\S23\C17-33-4.ZAK

Point	Direction	Distance	Northing	Easting	Elevation
Precision Ratio	=	1 : 4.45E+23			
Length Traversed	=	4448.600			
Length To Close	=	0.000			
Error in Latitude	=	0.000			
Error in Departure	=	0.000			
Error in Elevation	=	0.000			
Area = Open Traverse - No Area					
Total Angular Error	=	0°00'00.0"			
Error Per Station	=	0°00'00.0"			
Raw:	n00.1520w	172.47			
TR	N 0°15'20.0" W	172.470			
	25		4556.95846	5019.62680	0.000
Raw:	n00.2548w	105.99			
TR	N 0°25'48.0" W	105.990			
	26		4662.94547	5018.83136	0.000
Raw:	n00.1211w	183.41			
TR	N 0°12'11.0" W	183.410			
	27		4846.35432	5018.18136	0.000
Raw:	n06.4502w	154.71			
TR	N 6°45'02.0" W	154.710			
	28		4999.99177	4999.99566	0.000
IN	N 27°47'02.3" E	0.009			
	1		5000.00000	5000.00000	0.000

Area = 1455909.268 Sq. Feet or 33.423 Acres

Database Saved: Thursday, November 29, 2001 10:23 am.



SOUTHEASTERN LAND SURVEYS

LEONARD F. SWOYER
REGISTERED PROFESSIONAL LAND SURVEYOR

3428 Pleasant Hill Road
Athens, Ohio 45701
740/593-8701

TRACT 3

Situated in Lease Lot 3 of Section 23, Alexander Township, Town 8, Range 14, Athens County, Ohio and described as follows:

Commencing at an 11" x 4" limestone found at the northwest corner of Lease Lot 1, Section 22, Alexander Township; thence along the north line of Lease Lot 3 of Section 22, North 87 Degrees 42 Minutes 26 Seconds West for a distance of 167.26 feet to a point at the southeast corner of a 47.54 acre tract described in Volume 260, Page 1063, Athens County Official Records; thence along the east line of said 47.54 acre tract, North 05 Degrees 57 Minutes 03 Seconds East for a distance of 182.64 feet to THE TRUE POINT OF BEGINNING of this tract; thence continuing along the east line of said 47.54 acre tract, North 05 Degrees 52 Minutes 28 Seconds East for a distance of 1316.59 feet to a set iron pin at the northeast corner of said 47.54 acre tract; thence on a new property line, South 84 Degrees 21 Minutes 40 Seconds East (passing a set iron pin at 856.63 feet) for a total distance of 916.86 feet to a point in the flow line of the East Branch of Margaret's Creek; thence along the flow line of the East Branch of Margaret's Creek for the following two bearings and distances: 1) South 47 Degrees 34 Minutes 04 Seconds East for a distance of 92.03 feet to a point; 2) thence South 49 Degrees 37 Minutes 03 Seconds East for a distance of 61.71 feet to a point in the east line of Grantor's tract and the west line of a tract described in Volume 273, Page 1033, Athens County Official Records; thence leaving said creek, along the east line of Grantor's tract and the west line of aforesaid tract, South 36 Degrees 17 Minutes 26 Seconds West for a distance of 294.31 feet to a set iron pin; thence continuing along the east line of Grantor's tract and the west line of aforesaid tract, South 05 Degrees 57 Minutes 05 Seconds West for a distance of 1137.85 feet to a nail in an 18" walnut* in the south line of Lease Lot 3 of Section 23, thence along the south line of Lease Lot 3, the south

Description checked for
Mathematical Accuracy
ATHENS COUNTY
ENGINEER'S OFFICE
BY: S. Blausey
DATE: 11-29-01

CONSTRUCTION
42

Description checked for
Mathematical Accuracy
ATHENS COUNTY
ENGINEER'S OFFICE
BY: S. Blausey
DATE: 11-29-01

SUBDIVISIONS

PROPERTY

line of Grantor's tract and a north line of a 77.88 acre tract described in Volume 273, Page 1053, Athens County Official Records, North 85 Degrees 00 Minutes 17 Seconds West for a distance of 207.36 feet to an iron pin*; thence leaving the south line of Lease Lot 3 and along the south line of Grantor's tract and the north line of a 1.6599 acre tract described in Volume 260, Page 1063, Athens County Official Records, North 64 Degrees 09 Minutes 36 Seconds West for a distance of 300.46 feet to an iron pin*; thence continuing along the south line of Grantor's tract and the north line of said 1.6599 acre tract, North 75 Degrees 23 Minutes 28 Seconds West (passing an iron pin* at 369.07 feet) for a total distance of 406.08 feet to the POINT OF BEGINNING, containing 29.404 acres and being a part of a 98.75 acre tract of land described in Volume 307, Page 717, Athens County Deed Records.

Note: Unless otherwise noted all set iron pins are 5/8" in diameter rebar, 30 inches in length and capped with a plastic identification marker inscribed L. F. Swoyer P.S. 6765.

The above description was prepared under the supervision of Leonard F. Swoyer, Jr., Registered Professional Land Surveyor Number 6765 and based on a field survey performed by Southeastern Land Surveys dated October 25, 2001.

* Denotes location of corner by calculation from previous survey.

Subject to all easements and right of ways of record.

Thursday, November 29, 2001 10:29 am.

Pg: 1

Registered to:

ATHENS COUNTY ENGINEER DEPT.

File Name:

C:\LOTSPL~1\ALEX\S23\C17-29-4.ZAK

Point	Direction	Distance	Northing	Easting	Elevation
Database opened: Thursday, November 29, 2001 10:23 am.					
Assigned point					
1			5000.00000	5000.00000	0.000
Start					
1			5000.00000	5000.00000	0.000
Raw:	n05.5228e	1316.59			
TR	N 5°52'28.0" E	1316.590			
2			6309.67602	5134.75149	0.000
Raw:	s84.2140e	916.86			
TR	S 84°21'40.0" E	916.860			
3			6219.58684	6047.17474	0.000
Raw:	s47.3404e	92.03			
TR	S 47°34'04.0" E	92.030			
4			6157.49258	6115.09988	0.000
Raw:	s49.3703e	61.71			
TR	S 49°37'03.0" E	61.710			
5			6117.51146	6162.10662	0.000
Raw:	s36.1726w	294.31			
TR	S 36°17'26.0" W	294.310			
6			5880.28999	5987.91032	0.000
Raw:	s05.5705w	1137.85			
TR	S 5°57'05.0" W	1137.850			
7			4748.57275	5869.93274	0.000
Raw:	n85.0017w	207.36			
TR	N 85°00'17.0" W	207.360			
8			4766.62834	5663.36032	0.000
Raw:	n64.0936w	300.6			
TR	N 64°09'36.0" W	300.600			
9			4897.64771	5392.81590	0.000
Raw:	n75.2328w	406.08			
TR	N 75°23'28.0" W	406.080			
10			5000.06900	4999.86445	0.000
IN	S 63°01'19.7" E	0.152			
1			5000.00000	5000.00000	0.000

Editing Raw Data
 Traverse Modified
 Rerunning Modified Traverse

Inversing Adjusted Points

Go to					
1			5000.00000	5000.00000	0.000
EP	S 0°00'00.0" E	10.000	New Backsight Bng. (B.S. is ~BS1)		
Start					
1			5000.00000	5000.00000	0.000
Raw:	N05.5228E	1316.59			
TR	N 5°52'28.0" E	1316.590			
2			6309.67602	5134.75149	0.000
Raw:	S84.2140E	916.86			
TR	S 84°21'40.0" E	916.860			

Thursday, November 29, 2001 10:29 am.

Pg: 2

Registered to:

ATHENS COUNTY ENGINEER DEPT.

File Name:

C:\LOTSPL~1\ALEX\S23\C17-29-4.ZAK

	Point	Direction	Distance	Northing	Easting	Elevation
	3			6219.58684	6047.17474	0.000
Raw:	S47.3404E		92.03			
TR	S 47°34'04.0" E		92.030			
	4			6157.49258	6115.09988	0.000
Raw:	S49.3703E		61.71			
TR	S 49°37'03.0" E		61.710			
	5			6117.51146	6162.10662	0.000
Raw:	S36.1726W		294.31			
TR	S 36°17'26.0" W		294.310			
	6			5880.28999	5987.91032	0.000
Raw:	S05.5705W		1137.85			
TR	S 5°57'05.0" W		1137.850			
	7			4748.57275	5869.93274	0.000
Raw:	N85.0017W		207.36			
TR	N 85°00'17.0" W		207.360			
	8			4766.62834	5663.36032	0.000
Raw:	N64.0936W		300.46			
TR	N 64°09'36.0" W		300.460			
	9			4897.58669	5392.94191	0.000
Raw:	N75.2328W		406.08			
TR	N 75°23'28.0" W		406.080			
	10			5000.00798	4999.99045	0.000
IN	S 50°06'51.0" E		0.012			
	1			5000.00000	5000.00000	0.000

Area = 1280815.271 Sq. Feet or 29.403 Acres

Precision Ratio	=	1 : 4.73E+23
Length Traversed	=	4733.262
Length To Close	=	0.000
Error in Latitude	=	0.000
Error in Departure	=	0.000
Error in Elevation	=	0.000

Area = 1280815.271 Sq. Feet or 29.403 Acres

Total Angular Error	=	0°00'00.0"
Error Per Station	=	0°00'00.0"

Database Saved: Thursday, November 29, 2001 10:29 am.

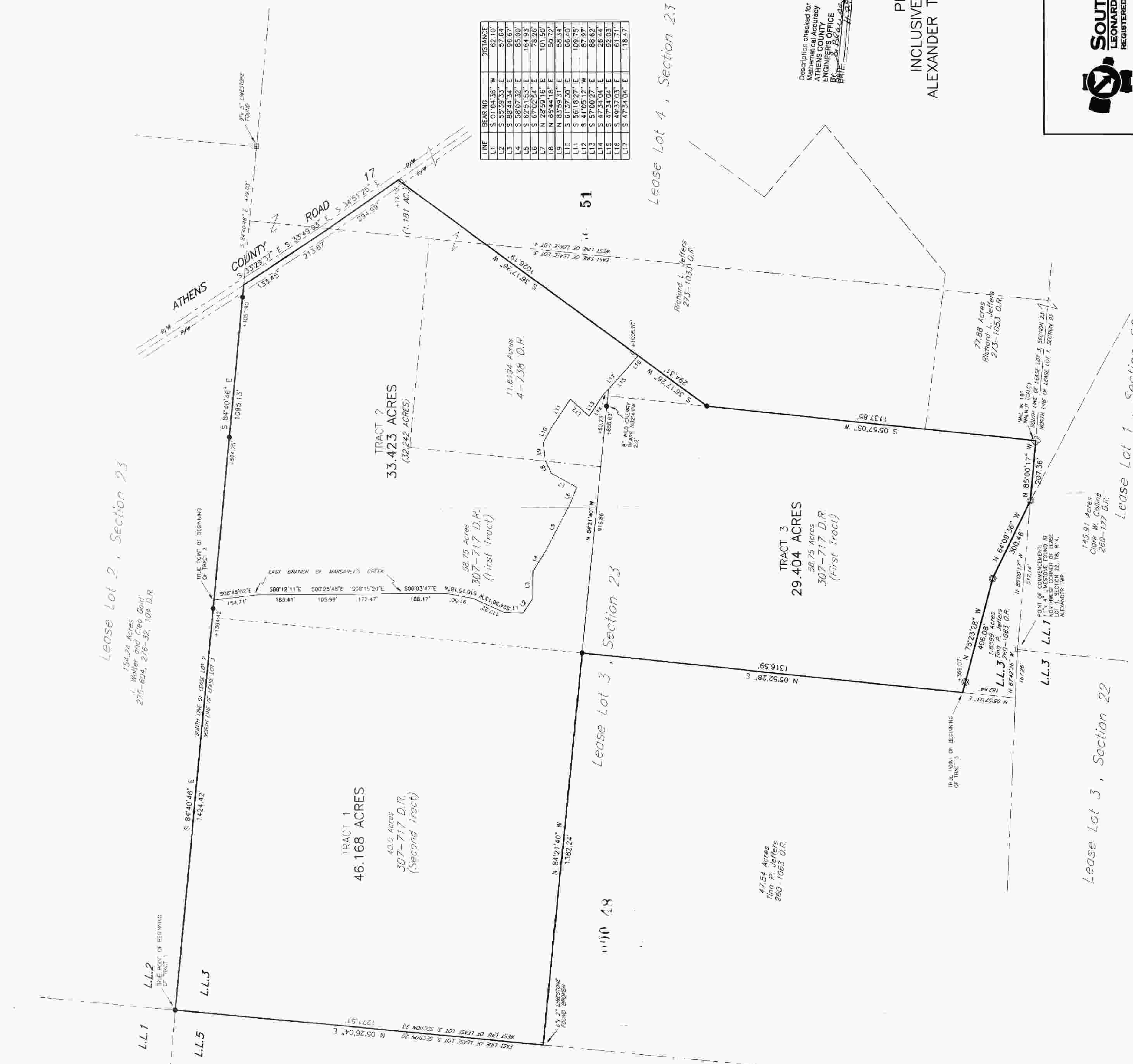
Lease Lot 1, Section 29
 75.22 Acres
 John C. and Janet L. Boale
 397-451

Lease Lot 2, Section 23
 154.24 Acres
 F. Walter and Chris Galt
 275-804, 276-32, 108 D.R.

109.10 Acres
 Roy and Karen Sue Rowles
 370-657

Lease Lot 5, Section 29

47



LINE	BEARING	DISTANCE
L1	S 84°40'46" E	1424.42
L2	S 84°40'46" E	1095.13
L3	S 85°44'34" E	96.67
L4	S 85°07'32" E	85.00
L5	S 87°02'24" E	78.26
L6	N 28°59'16" E	101.50
L7	N 87°44'18" E	84.14
L8	N 87°44'18" E	84.14
L9	N 87°44'18" E	84.14
L10	S 81°37'30" E	66.40
L11	S 87°09'27" E	109.75
L12	S 87°09'27" E	109.75
L13	S 87°34'04" E	92.03
L14	S 87°34'04" E	92.03
L15	S 87°34'04" E	92.03
L16	S 87°34'04" E	92.03
L17	S 87°34'04" E	118.47

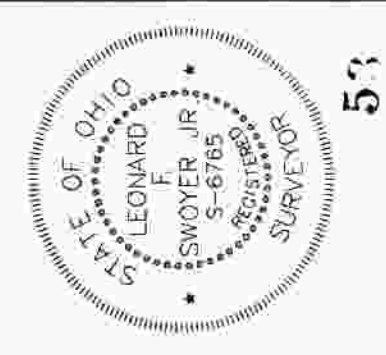
LEGEND
 ○ IRON PIN FOUND
 ● 5/8" IRON PIN SET, CAPPED SCRIBED L. F. SWOYER FS 6765
 □ STONE FOUND
 ⊙ DENOTES LOCATION OF CORNER BY CALCULATION FROM PREVIOUS SURVEY
 ASSUMED MERIDIAN RELATIVE TO THE EAST LINE OF GRANITOR'S PROPERTY RECITED IN DEED FS 381728' N.
 REFERENCES SHOWN TO PREVIOUS SURVEYS
 PREVIOUS SURVEY BY LEONARD F. SWOYER, JR. 3-5-86



Description checked for
 Athens County
 ENGINEERS OFFICE
 DATE: 5/26/86

PLAT OF SURVEY OF TRACTS 1 THROUGH 3,
 INCLUSIVE, SITUATED IN LEASE LOTS 3 AND 4, SECTION 23,
 ALEXANDER TOWNSHIP, TOWN 8, RANGE 14, ATHENS COUNTY, OHIO

PREPARED BY SOUTHEASTERN LAND SURVEYS
 FOR: DWIGHT A. LUGH, 10-25-01
 LEONARD F. SWOYER, JR.
 REGISTERED PROFESSIONAL LAND SURVEYOR No. 6765



SOUTHEASTERN LAND SURVEYS
 LEONARD F. SWOYER, JR.
 REGISTERED PROFESSIONAL LAND SURVEYOR
 3428 PLAZA HILL ROAD
 ATHENS, OHIO 45701
 740/2866701

51

51

49

46