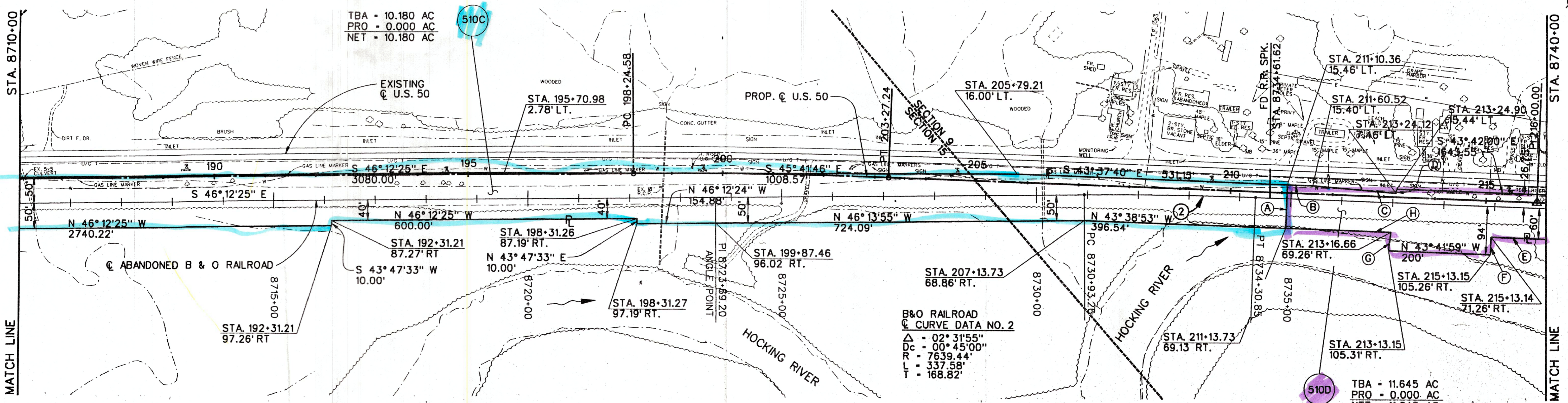
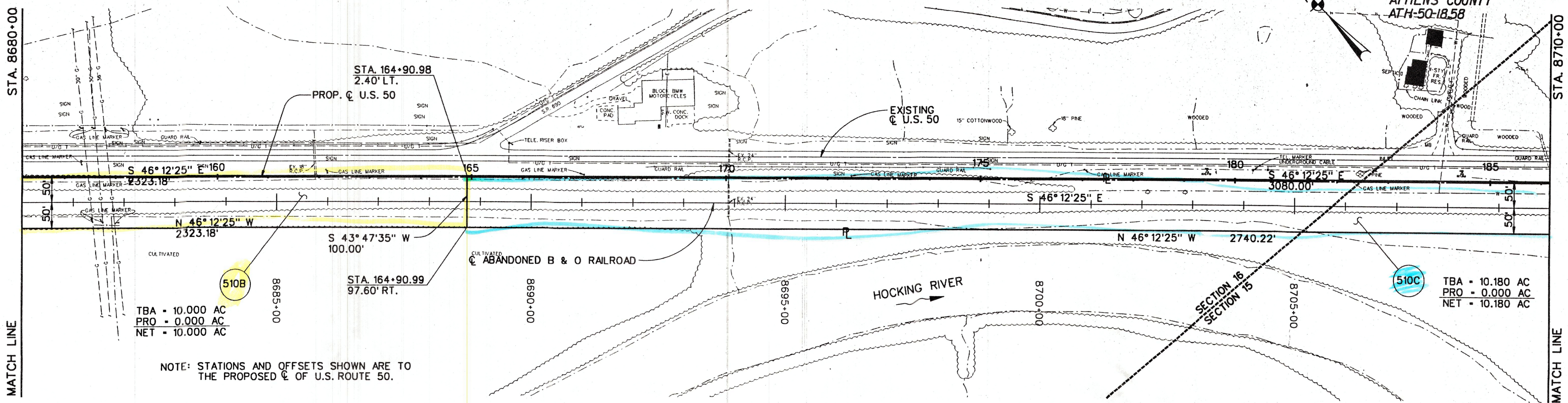


SCALE: 1"=100'

FED. RD. DIVISION	STATE	PROJECT
5	OHIO	

3
7

ATHENS COUNTY
ATH-50-18.58



(A) N 46° 22' 20" E	84.58'	(D) N 51° 52' 19" E	8.02'	(G) N 51° 52' 19" E	36.22'
(B) S 43° 37' 40" E	50.17'	(E) N 43° 42' 00" W	1416.74'	(H) N 43° 38' 53" W	206.39'
(C) S 40° 54' 20" E	163.79'	(F) S 46° 18' 01" W	34.00'		

PARSONS BRINCKERHOFF OHIO, INC.
COLUMBUS, OHIO

DATE: 01/22/92; PROJECT: 7834; FILE: 34RRPL03.DGN; REV. A

ATH-50 - RAILROAD PLAN, STA. 8680+00 TO STA. 8740+00