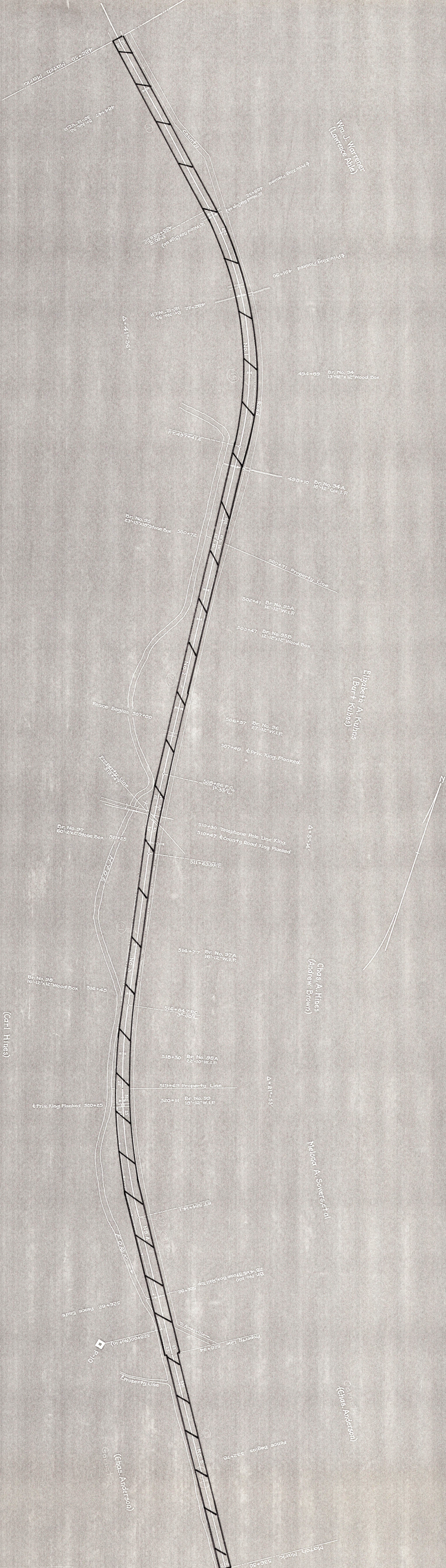


SYNOPSIS OF PROGRESS

Grades	Instrument	Date	Notes
1	Wm. J. Walters	July 1918	Initial survey
2	Wm. J. Walters	Aug 1918	Final survey
3	Chas. A. Hines	Dec 22 1931	Re-survey
4	Wm. J. Walters	Dec 2 1931	Final survey
5	Wm. J. Walters	May 19 1933	Final survey
6	Wm. J. Walters	May 19 1933	Final survey



**ATHENS COUNTY
AMES TOWNSHIP**

Sheet No. 10 of 18 of the Federal Valley Railroad
Main Line - from station 482+50 to station 536+50
WALTERS ENGINEERS
VALMONT ENGINEERS

RIGHT OF WAY AND TRACK MAP
THE FEDERAL VALLEY RAILROAD
 OPERATED BY
THE FEDERAL VALLEY RAILROAD COMPANY
 MAIN LINE - FROM STATION 482+50 TO STATION 536+50
 SCALE 1 INCH = 100 FEET
 JUNE 30, 1930
 OFFICE OF CHIEF ENGINEER, COLUMBUS, OHIO

Drawn by O.R. 133 B



APPROVED	DATE
WALTERS	6/30/30
ENGINEER	