

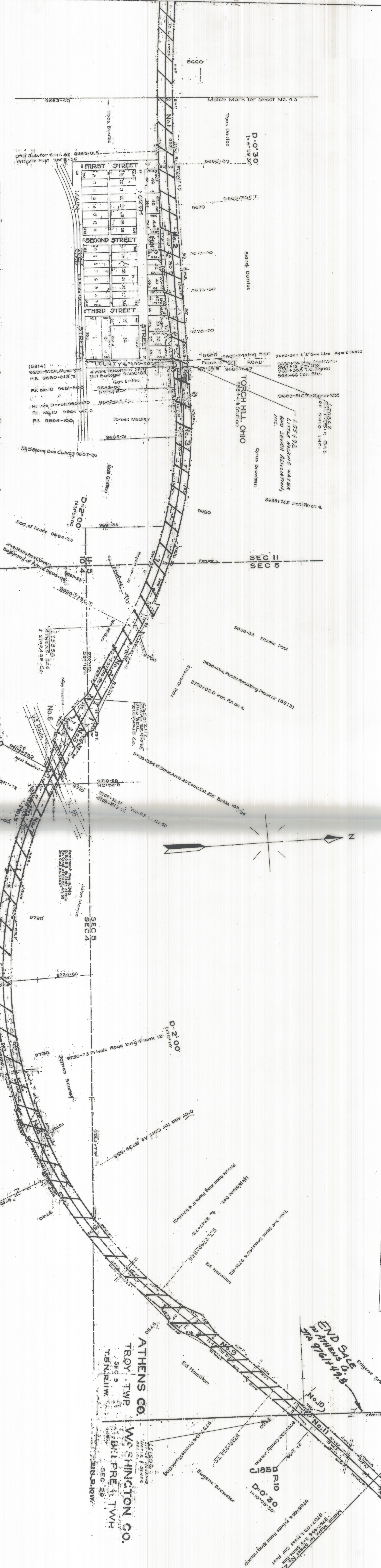
| ALTERNATIVE DATE INSTALLED OR EXTENDED | DESCRIPTION |
|--|---|
| Completed - Sept. 21, 1925 | Reinforcement of 2nd span with 12 in. concrete and installation of 2nd span to support of Sta. 9681+50.0. |
| Completed - Sept. 21, 1925 | Assessment, Troy, Mercer County Highway # 461, station 9681+00.0. |

ATHENS & WASHINGTON CO., OHIO. TROY & BELPRE TOWNSHIPS.

| Recorded | Area | Remarks |
|----------|------|---------|
| 5144 | 1.00 | Revised |
| 5144 | 1.00 | Revised |
| 5144 | 1.00 | Revised |

Schedule for Land Sales, Etc.

| Recorded | Area | Remarks |
|----------|------|---------|
| 5144 | 1.00 | Revised |
| 5144 | 1.00 | Revised |
| 5144 | 1.00 | Revised |



| No. | Station | Description | Remarks |
|-----|-----------|-------------|---------|
| 1 | 9681+00.0 | Station | Station |
| 2 | 9681+00.0 | Station | Station |
| 3 | 9681+00.0 | Station | Station |
| 4 | 9681+00.0 | Station | Station |
| 5 | 9681+00.0 | Station | Station |
| 6 | 9681+00.0 | Station | Station |
| 7 | 9681+00.0 | Station | Station |
| 8 | 9681+00.0 | Station | Station |
| 9 | 9681+00.0 | Station | Station |
| 10 | 9681+00.0 | Station | Station |
| 11 | 9681+00.0 | Station | Station |
| 12 | 9681+00.0 | Station | Station |

NOTE: Changes in stationing on the right-hand side of the plan are indicated by a plus sign (+) and on the left-hand side by a minus sign (-). Stationing is measured from Center Line of Track.

RIGHT-OF-WAY A-13 TRACK MARKS
THE BALTIMORE AND OHIO RAILROAD COMPANY
OPERATED BY
THE BALTIMORE AND OHIO RAILROAD COMPANY
OHIO-NEWARK DIVISION
MAIN LINE

STATION 9681+40 TO STATION 9769+00
SCALE 1 IN. = 20 FT. (VERTICAL) 1 IN. = 100 FT. (HORIZONTAL)

