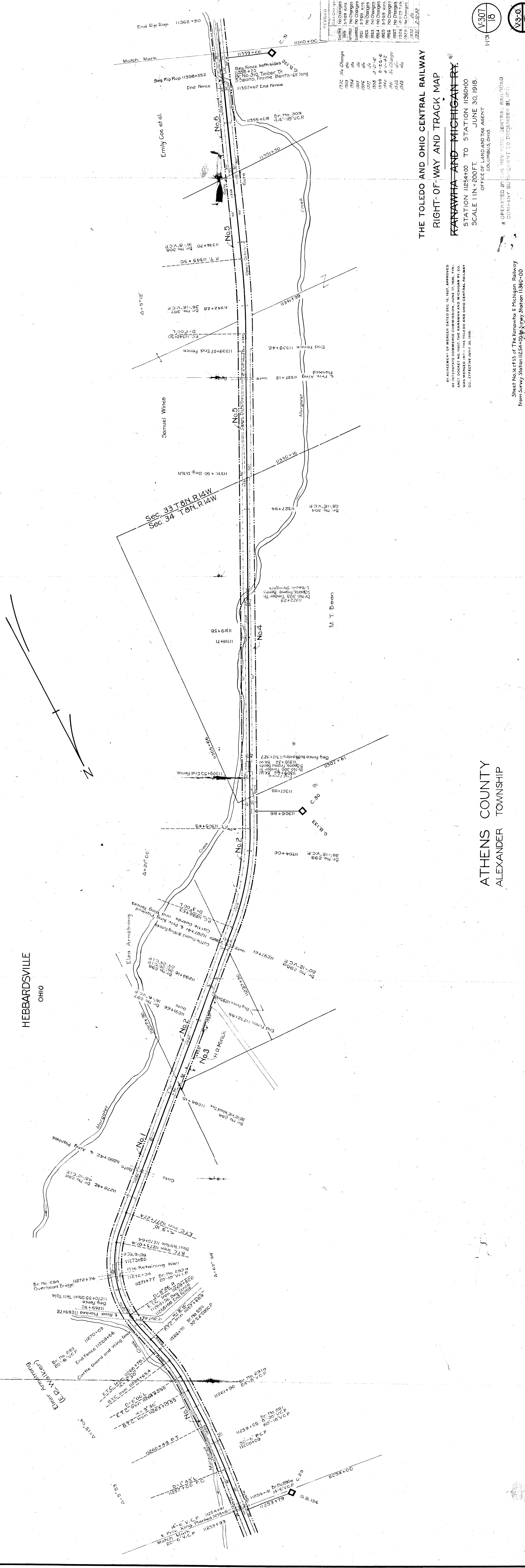


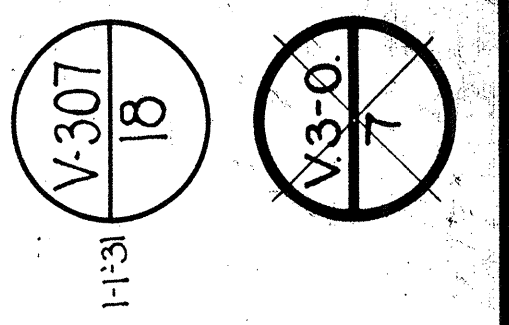
Subst. No.	Location	Class	Length		Remarks
			Right of Way	Total	

No.	Grantor	Grantee	Instrument	Date	Record	Cust No.	Remarks
1	Elmer Armstrong	O.C.R.R. Co.	Grant	Jan. 13, 1882		110	
2	Elza Armstrong	"	Voucher	Feb. 13, 1882		111	
3	H.D. Minck	K & M Ry. Co.	Deed	Dec. 21, 1895	DB 76 Pgs. 164-5, Jan. 22, 1896	112	Accounting records show the payment of \$85000 to Elza Armstrong for this parcel but deed cannot be located.
4	M.T. Bean	O.C.R.R. Co.	Voucher	Mar. 9, 1882		113	
5	Samuel Wines	A.S. LERY Co.	Grant	Mar. 5, 1870		114	\$ 2750.00 M.T. Bean
6	Samuel Wines	O.C.R.R. Co.	Condemnation	June, 1886	Cir. Ct. J. Mil. #1, Pgs. 32-33	114	
7	Emily Coe et al.	A. & L. E. Ry. Co.	Grant	Mar. 7, 1870		115	
8	E.R. Walker	K & M Ry. Co.	Agreement	June 21, 1919	DB 129 Page 79, Aug. 12, 1919	116	Release of undercrossing Completion Report No. 28A



Date	Change	By
1922	No Change	do
1923	No Change	do
1924	No Change	do
1925	No Change	do
1926	No Change	do
1927	No Change	do
1928	No Change	do
1929	No Change	do
1930	No Change	do
1931	No Change	do
1932	No Change	do
1933	No Change	do
1934	No Change	do
1935	No Change	do
1936	No Change	do
1937	No Change	do
1938	No Change	do
1939	No Change	do
1940	No Change	do
1941	No Change	do
1942	No Change	do
1943	No Change	do
1944	No Change	do
1945	No Change	do
1946	No Change	do
1947	No Change	do
1948	No Change	do
1949	No Change	do
1950	No Change	do

THE TOLEDO AND OHIO CENTRAL RAILWAY
 RIGHT-OF-WAY AND TRACK MAP
 KANAWHA AND MICHIGAN RY.
 STATION 11254+00 TO STATION 11360+00
 SCALE 1 IN = 200 FT.
 OFFICE OF LAND AND TAX AGENT
 COLUMBUS, OHIO
 JUNE 30, 1918.



ATHENS COUNTY
 ALEXANDER TOWNSHIP

BY AGREEMENT OF MERGER DATED DEC. 15, 1927, APPROVED BY THE BOARD OF DIRECTORS OF THE TOLEDO AND OHIO CENTRAL RAILWAY CO. AND THE BOARD OF DIRECTORS OF THE KANAWHA AND MICHIGAN RY. CO. WAS MERGED INTO THE TOLEDO AND OHIO CENTRAL RAILWAY CO., EFFECTIVE JUNE 30, 1928.

OPERATED BY THE NEW YORK CENTRAL RAILROAD COMPANY SUCCESSOR TO DECEMBER 31, 1918.

Sheet No. 34 of 55 of The Kanawha & Michigan Railway from Survey Station 11254+00 to Survey Station 11360+00

Lloyd E. Fox Agent