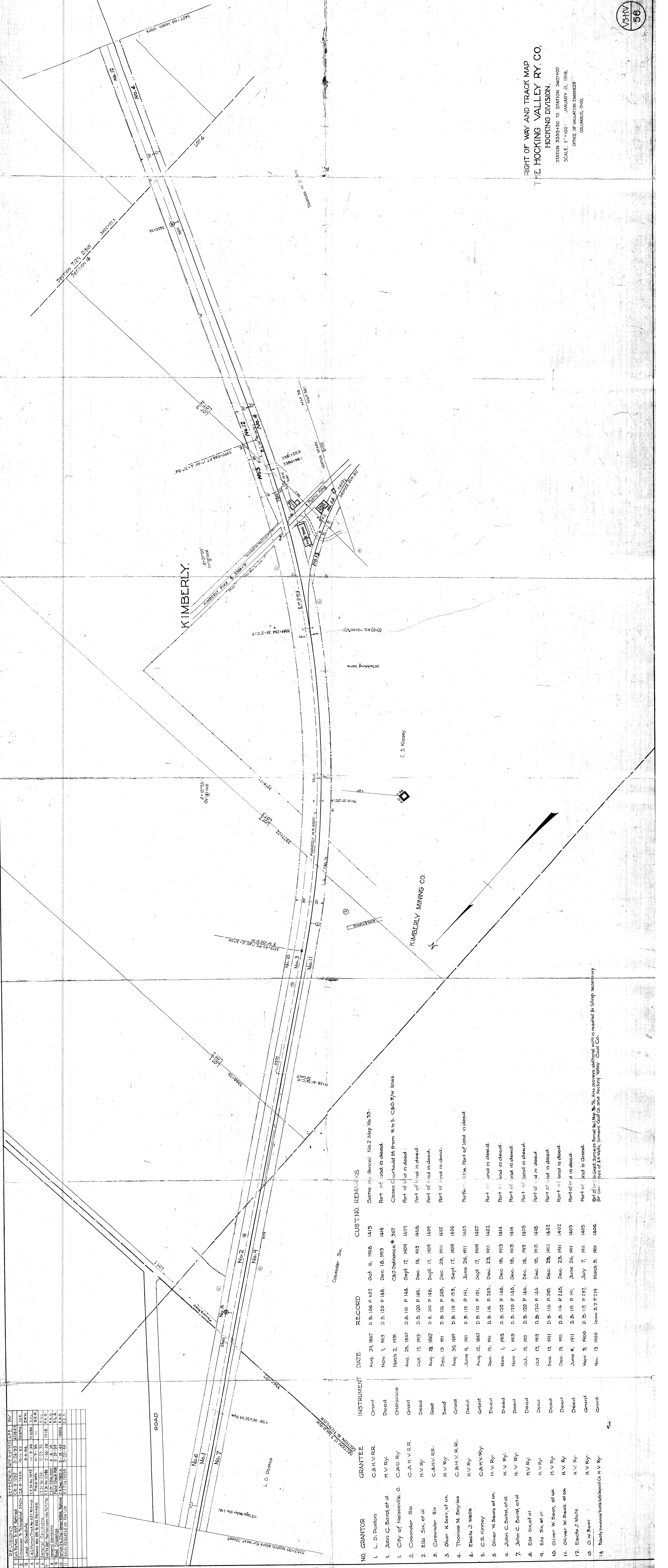


RIGHT OF WAY AND TRACK MAP  
 THE HOCKING VALLEY RY. CO.  
 HOCKING DIVISION.  
 STATION 3355+30 TO STATION 3407+00  
 SCALE, 1"=100' JANUARY 21, 1918.  
 OFFICE OF VALUATION ENGINEER  
 COLUMBUS, OHIO.



NO.	REVISIONS	DATE	BY
1	Original	5-21-13	W.H.S.
2	As per	5-21-13	W.H.S.
3	As per	5-21-13	W.H.S.
4	As per	5-21-13	W.H.S.
5	As per	5-21-13	W.H.S.
6	As per	5-21-13	W.H.S.
7	As per	5-21-13	W.H.S.
8	As per	5-21-13	W.H.S.
9	As per	5-21-13	W.H.S.
10	As per	5-21-13	W.H.S.
11	As per	5-21-13	W.H.S.
12	As per	5-21-13	W.H.S.
13	As per	5-21-13	W.H.S.
14	As per	5-21-13	W.H.S.
15	As per	5-21-13	W.H.S.
16	As per	5-21-13	W.H.S.
17	As per	5-21-13	W.H.S.
18	As per	5-21-13	W.H.S.
19	As per	5-21-13	W.H.S.
20	As per	5-21-13	W.H.S.

NO.	GRANTOR	GRANTEE	INSTRUMENT	DATE	RECORD	CUST. NO.	REMARKS
1.	L. D. Peabon	C.&H.V.R.R.	Grant	Aug. 24, 1867	D. B. 106 P. 637.	1415	Same as Parcel No. 2 Map No. 55.
1.	John C. Bond et al	H.V.R.Y.	Deed	Nov. 1, 1913	D. B. 120 P. 148.	1414	Part of land in deed.
1.	City of Nelsonville, O.	C.&O.R.Y.	Ordinance	March 2, 1931	C&O Ordinance # 367	367	Closes Clearhold St from N to S. C&O R/W lines.
2.	Cosander Six	C.&H.V.R.R.	Grant	Aug. 28, 1867	D. B. 110 P. 148.	1409	Part of land in deed.
2.	Ella Six et al	H.V.R.Y.	Deed	Oct. 13, 1913	D. B. 120 P. 146.	1405	Part of land in deed.
3.	Cosander Six	C.&H.V.R.R.	Grant	Aug. 28, 1867	D. B. 110 P. 146.	1409	Part of land in deed.
3.	Oliver W. Bean, et al	H.V.R.Y.	Deed	Dec. 13, 1911	D. B. 116 P. 245.	1402	Part of land in deed.
4.	Thomas M. Boyles	C.&H.V.R.R.	Grant	Aug. 30, 1867	D. B. 110 P. 153.	1404	Part of land in deed.
4.	Electa J. Wells	H.V.R.Y.	Deed	June 9, 1911	D. B. 115 P. 191.	1403	Part of land in deed.
5.	C.S. Nimney	C.&H.V.R.Y.	Grant	Aug. 12, 1867	D. B. 110 P. 151.	1407	Part of land in deed.
5.	Oliver W. Bean et al	H.V.R.Y.	Deed	Dec. 13, 1911	D. B. 116 P. 245.	1402	Part of land in deed.
6.	John C. Bond et al	H.V.R.Y.	Deed	Nov. 1, 1913	D. B. 120 P. 148.	1414	Part of land in deed.
7.	John C. Bond et al	H.V.R.Y.	Deed	Nov. 1, 1913	D. B. 120 P. 148.	1414	Part of land in deed.
8.	Ella Six et al	H.V.R.Y.	Deed	Oct. 13, 1913	D. B. 120 P. 146.	1405	Part of land in deed.
9.	Ella Six et al	H.V.R.Y.	Deed	Oct. 13, 1913	D. B. 120 P. 146.	1405	Part of land in deed.
10.	Oliver W. Bean, et al	H.V.R.Y.	Deed	Dec. 13, 1911	D. B. 116 P. 245.	1402	Part of land in deed.
11.	Oliver W. Bean, et al	H.V.R.Y.	Deed	Dec. 13, 1911	D. B. 116 P. 245.	1402	Part of land in deed.
12.	Electa J. Wells	H.V.R.Y.	Deed	June 9, 1911	D. B. 115 P. 191.	1403	Part of land in deed.
13.	O. W. Bean	H.V.R.Y.	Grant	Nov. 3, 1900	D. B. 115 P. 237.	1405	Part of land in deed.
14.	Teddy Insurance Co. et al	H.V.R.Y.	Grant	Nov. 13, 1900	Lease B. 2 P. 279	1406	Part of land in deed.

Part of land in Grant Survey Parcel No. 56. Also conveys additional with as required for filling necessary for Coal in part of Kimberly Mining Co. and Hocking Valley Coal Co.