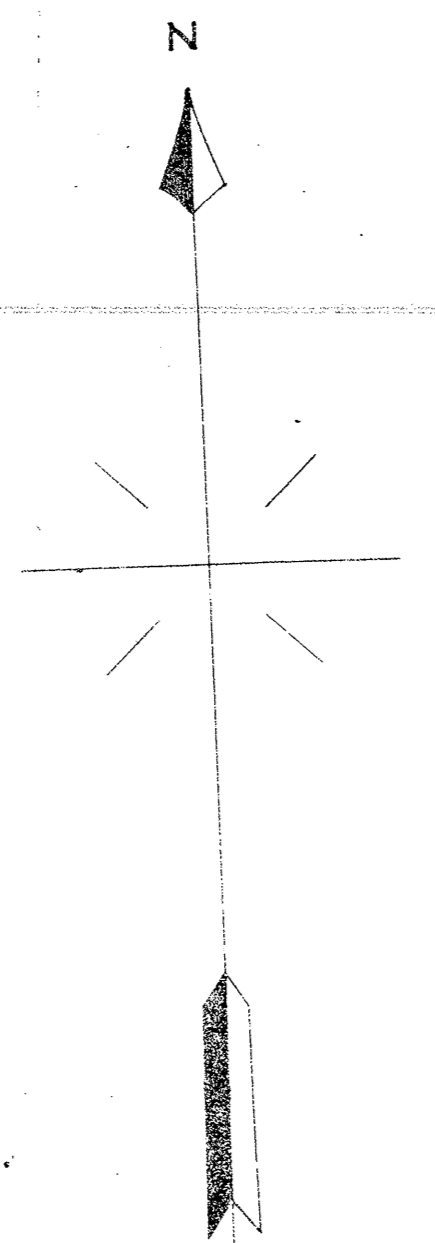
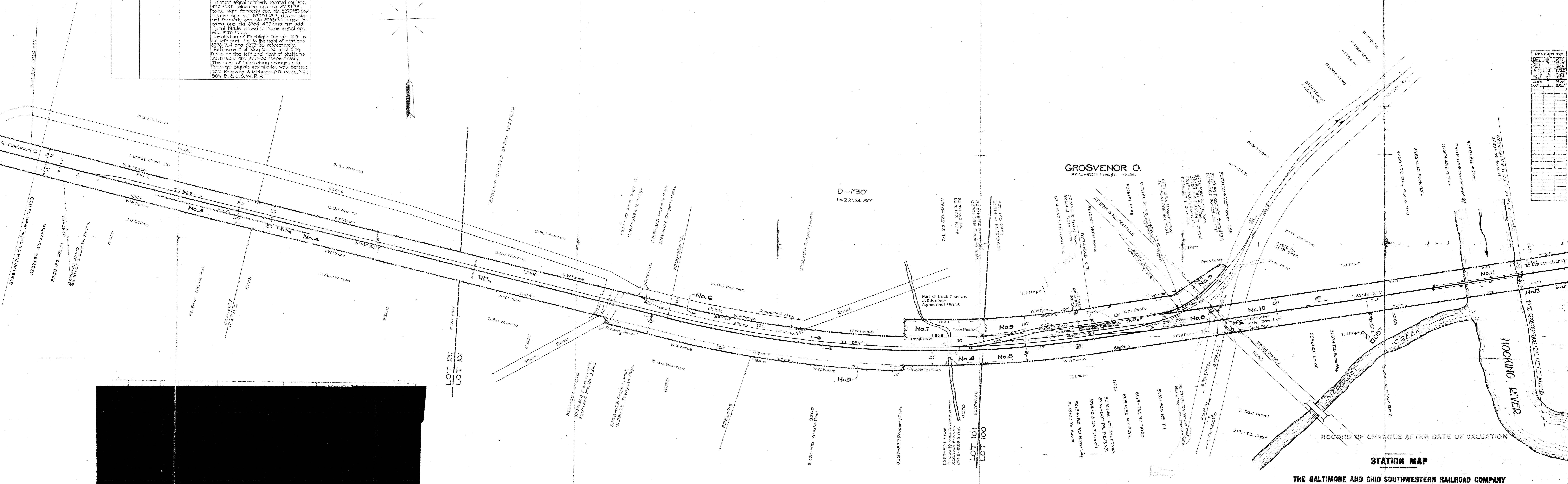


AUTHORITY	DATE INSTALLED OR RETIRED	DESCRIPTION
C17804 A.F.E. 1542	Installed Sept. 30-1921	To protect fill from slipping 187 Piles where driven on right between sta. 8241+16 and 8246+76, and 14 Piles on right between sta. 8252+77 and 8253+16 near Grosvenor, O.
A.F.E. 11495 C-28950	Retired May 28, 1924	Retirement of portion of interchange platform Sta. 8273+25.
C-23612 A.F.E. 7101	Completed Jan. 27, 1927	Old east turnout of T-1, P.S. of 8275+33.9 and west turnout of T-1243A(1), P.S. opp. sta. 8273+31.6 removed. A new turnout installed for T-1 with P.S. at station 8275+50.5, which lengthens T-1, 115', present L=3317'. A new turnout installed by T-1243A(1), P.S. opp. sta. 8274+50.7, shortening it 115'. Present L=3322'. Distant signal formerly located opp. sta. 8271+59.6 relocated opp. sta. 8271+76, home signal formerly opp. sta. 8275+85 now located opp. sta. 8273+68.8, distant signal formerly opp. sta. 8258+55 is now located opp. sta. 8254+77 and one additional blade added to home signal opp. sta. 8271+77. Installation of Flashlight Signals 12' to the left and 18' to the right of stations 8278+74.4 and 8279+30 respectively. Retirement of King signs and King bells on the left and right of stations 8278+74.4 and 8279+30 respectively. The cost of interlocking changes and flashlight signals installation was borne: 50% Kensington & Michigan R.R. (N.Y.C.R.R.) 50% B. & O. S. W. R. R.



ATHENS CO., OHIO
ATHENS TWP.
T-9N - R14W

REVISED TO	DATE	BY
May 24, 1927		
July 15, 1925		
July 16, 1927		
June 7, 1926		
Jan. 1, 1925		



D=1°30'
I=22°34' 30"

GROSVENOR O.
8274+672 Freight House.

RECORD OF CHANGES AFTER DATE OF VALUATION

STATION MAP

THE BALTIMORE AND OHIO SOUTHWESTERN RAILROAD COMPANY

OPERATED BY

THE BALTIMORE AND OHIO RAILROAD COMPANY

OHIO DIVISION MAIN LINE

STATION 8236+80 TO STATION 8289+60

SCALE: 1 IN. = 100 FT. JUNE 30, 1918

OFFICE OF VALUATION ENGINEER
BALTIMORE, MD.

Sheet No. 5301 19 primary and 18 supplemental sheets of The Baltimore & Ohio Southwestern R.R. Co., V-145.1, Ohio Division, Main Line, from survey station 8236+80 to survey station 8289+60
A. M. Taylor
Pilot Engineer.

Note:
All chaining was done on the right hand rail and all platens set out were measured from center-line of track.

91-OH-145.1 (S-30)

V145.1
S-30

W.H. March, 1918