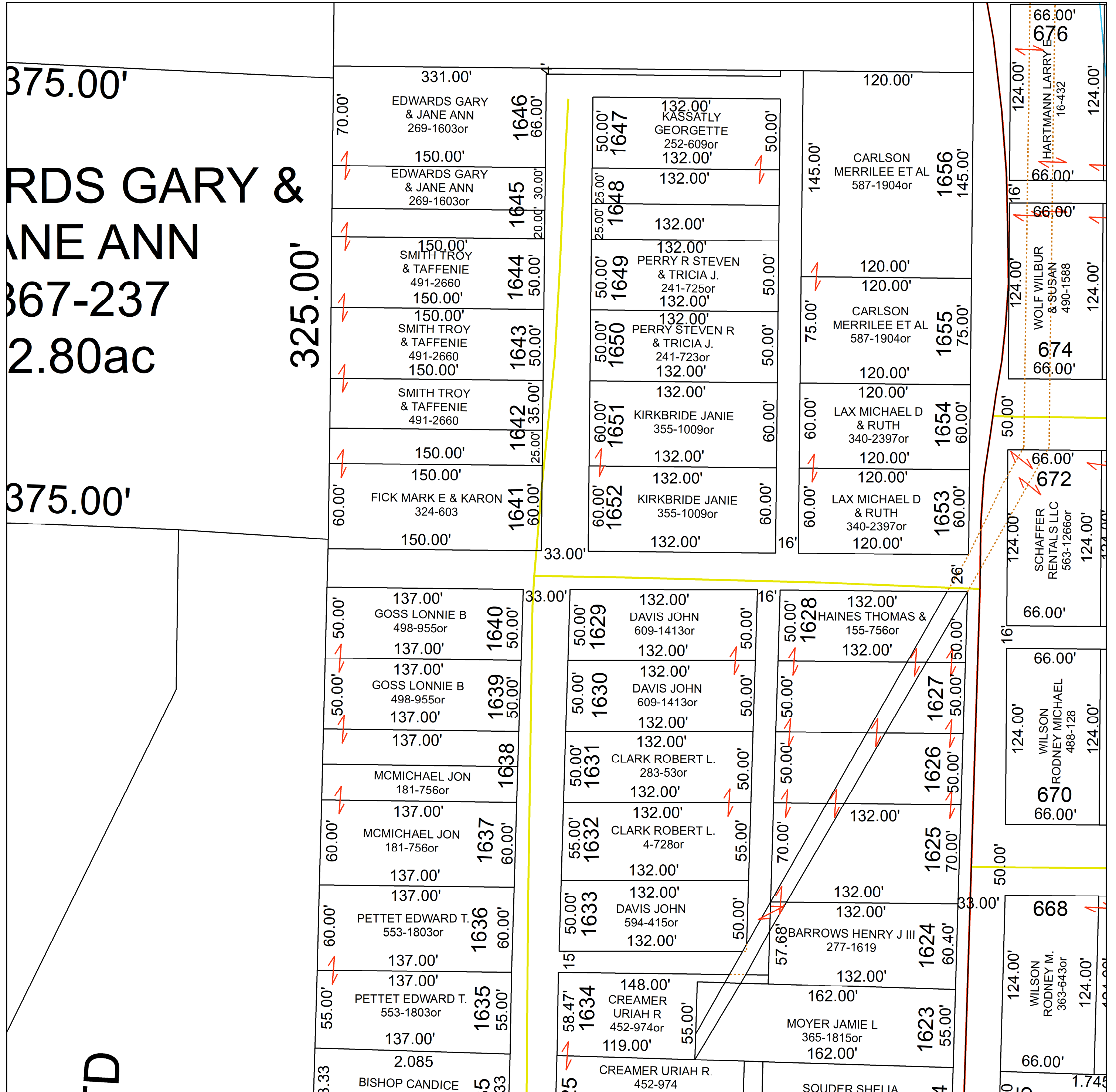
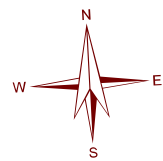


ATHENS COUNTY AUDITOR PLAT MAP

1 inch = 50 feet

These maps are believed to be correct and are to show ownership only.

York Twp.  
Nelsonville E-13



375.00'

EDWARDS GARY &  
JANE ANN

2.80ac

325.00'

375.00'

ED

70.00'	331.00'	EDWARDS GARY & JANE ANN 269-1603or	1646	66.00'
150.00'	150.00'	EDWARDS GARY & JANE ANN 269-1603or	1645	30.00'
150.00'	150.00'	SMITH TROY & TAFFENIE 491-2660	1644	50.00'
150.00'	150.00'	SMITH TROY & TAFFENIE 491-2660	1643	50.00'
150.00'	150.00'	SMITH TROY & TAFFENIE 491-2660	1642	35.00'
150.00'	150.00'	FICK MARK E & KARON 324-603	1641	60.00'

50.00'	132.00'	KASSATLY GEORGETTE 252-609or	1647	50.00'
132.00'	132.00'	PERRY R STEVEN & TRICIA J. 241-725or	1649	50.00'
132.00'	132.00'	PERRY STEVEN R & TRICIA J. 241-723or	1650	50.00'
132.00'	132.00'	KIRKBRIDE JANIE 355-1009or	1651	60.00'
132.00'	132.00'	KIRKBRIDE JANIE 355-1009or	1652	60.00'

120.00'	145.00'	CARLSON MERRILEE ET AL 587-1904or	1656	145.00'
120.00'	120.00'	CARLSON MERRILEE ET AL 587-1904or	1655	75.00'
120.00'	120.00'	LAX MICHAEL D & RUTH 340-2397or	1654	60.00'
120.00'	120.00'	LAX MICHAEL D & RUTH 340-2397or	1653	60.00'

50.00'	137.00'	GOSS LONNIE B 498-955or	1640	50.00'
50.00'	137.00'	GOSS LONNIE B 498-955or	1639	50.00'
137.00'	137.00'	MCMICHAEL JON 181-756or	1638	60.00'
60.00'	137.00'	MCMICHAEL JON 181-756or	1637	60.00'
60.00'	137.00'	PETTET EDWARD T. 553-1803or	1636	60.00'
55.00'	137.00'	PETTET EDWARD T. 553-1803or	1635	55.00'
3.33	2.085	BISHOP CANDICE	1633	5.33

50.00'	132.00'	DAVIS JOHN 609-1413or	1629	50.00'
50.00'	132.00'	DAVIS JOHN 609-1413or	1630	50.00'
50.00'	132.00'	CLARK ROBERT L. 283-53or	1631	50.00'
55.00'	132.00'	CLARK ROBERT L. 4-728or	1632	55.00'
50.00'	132.00'	DAVIS JOHN 594-415or	1633	50.00'
58.47'	148.00'	CREAMER URIAH R 452-974or	1634	55.00'
119.00'	162.00'	CREAMER URIAH R. 452-974	1623	55.00'

132.00'	132.00'	HAINES THOMAS & 155-756or	1628	50.00'
132.00'	132.00'	BARROWS HENRY J III 277-1619	1624	60.40'
132.00'	132.00'	MOYER JAMIE L 365-1815or	1623	55.00'
132.00'	132.00'	CLARK ROBERT L. 4-728or	1625	70.00'
132.00'	132.00'	CLARK ROBERT L. 283-53or	1626	50.00'
132.00'	132.00'	DAVIS JOHN 609-1413or	1627	50.00'

124.00'	66.00'	HARTMANN LARRY E 16-432	1676	66.00'
124.00'	66.00'	WOLF WILBUR & SUSAN 490-1588	1674	66.00'
124.00'	66.00'	SCHAFFER RENTALS LLC 563-1266or	1672	66.00'
124.00'	66.00'	WILSON RODNEY MICHAEL 488-128	1670	66.00'
124.00'	66.00'	WILSON RODNEY M. 363-643or	1668	66.00'