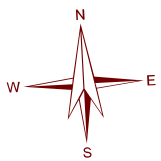


ATHENS COUNTY AUDITOR PLAT MAP

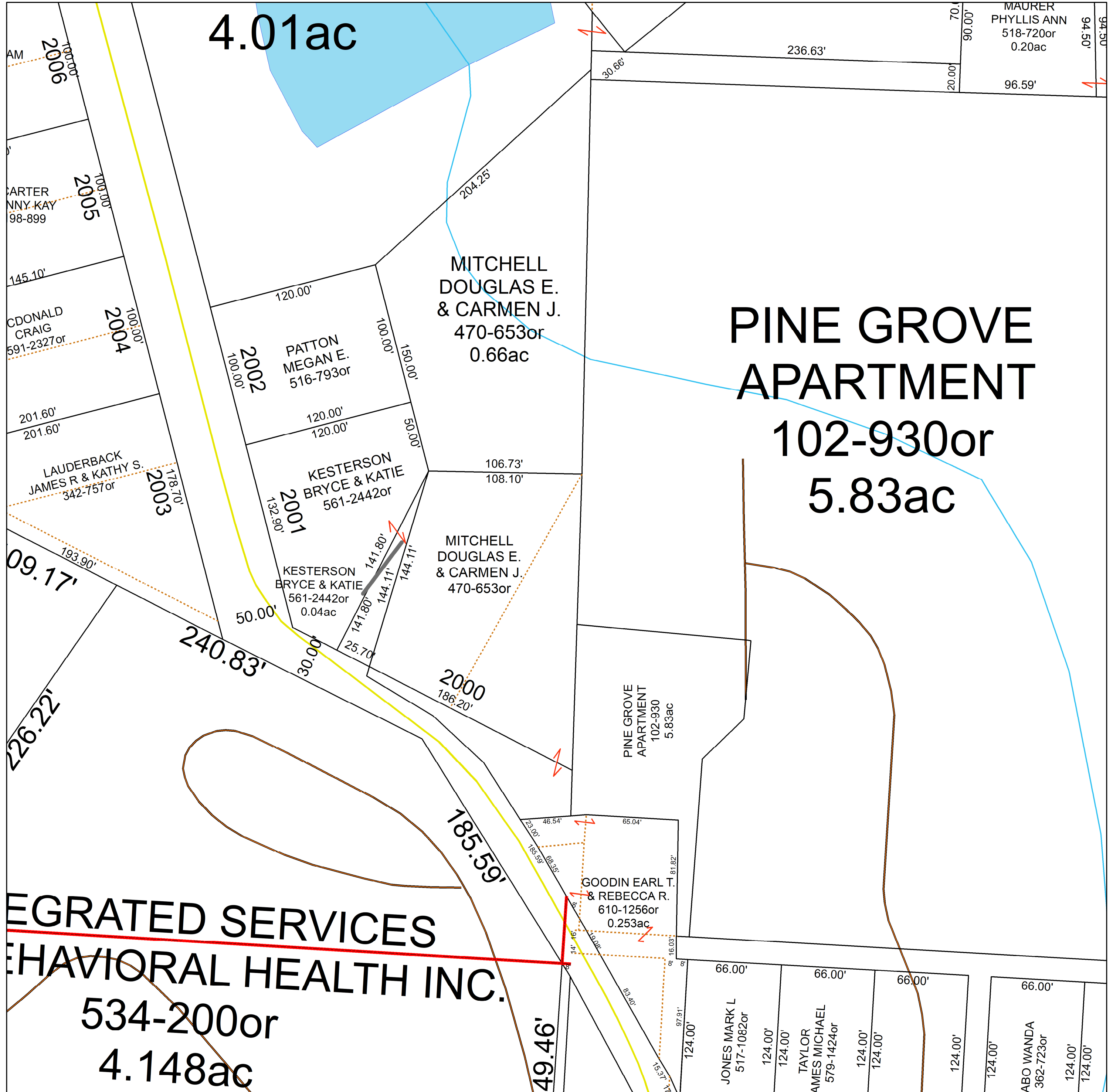
York Twp.
Nelsonville G-11

1 inch = 50 feet
These maps are believed to be correct and are to show ownership only.



4.01ac

PINE GROVE
APARTMENT
102-930or
5.83ac



INTEGRATED SERVICES
BEHAVIORAL HEALTH INC.
534-200or
4.148ac