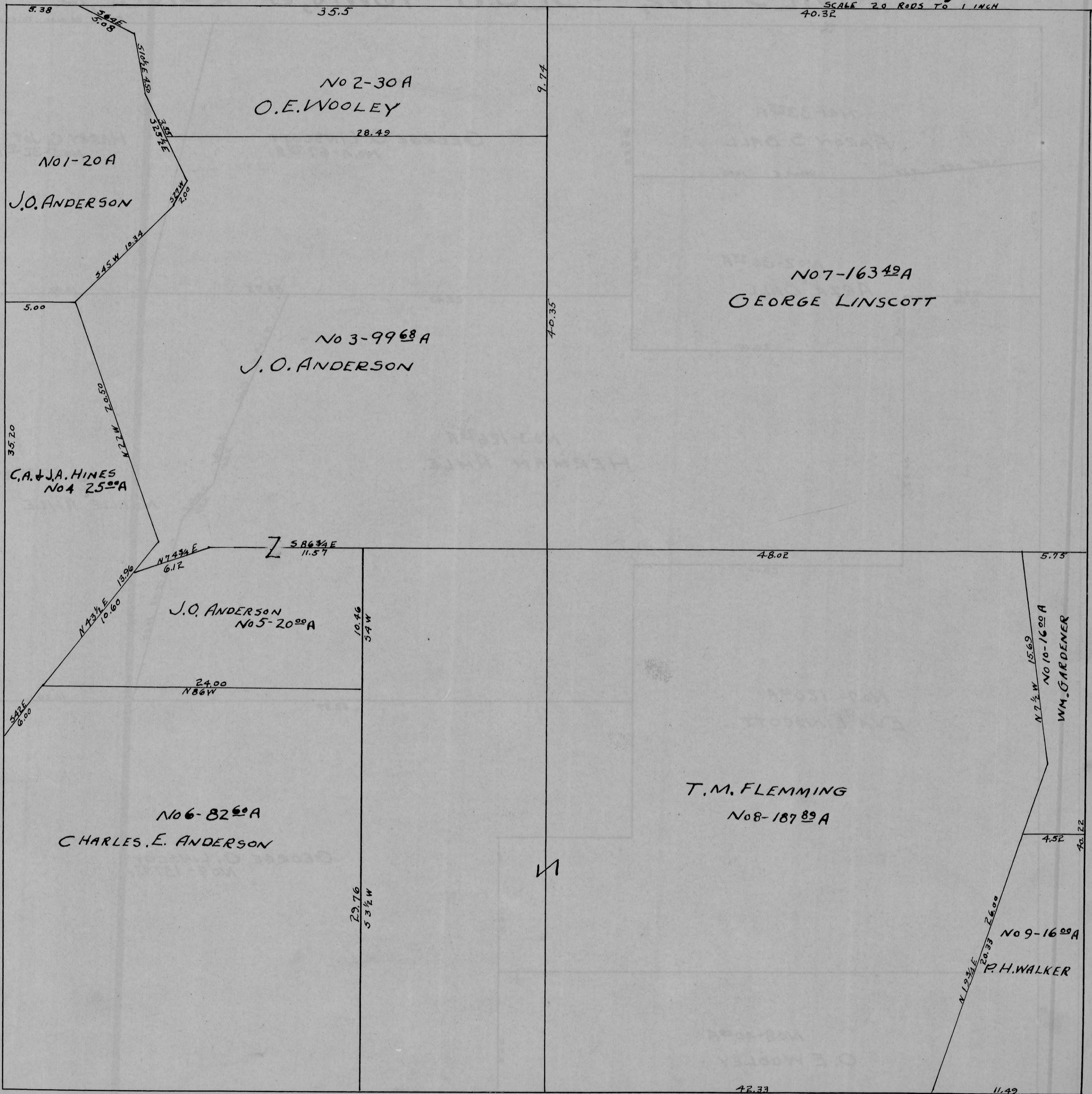


AMES TWP, - SEC. 5 - TOWN, 6 - RANGE, 13.

E.A

SCALE 20 RODS TO 1 INCH
40.32



5.38
35.5
9.74
No 2-30 A
O.E. WOOLEY
28.42

No 1-20 A
J.O. ANDERSON
345° W 10.34
5.00

No 3-9968 A
J.O. ANDERSON
70.50
35.20
C.A. & J.A. HINES
No 4 25° A
N 74° 34' E 10.60
13.96
N 74° 34' E 6.12
S 86° 34' E 11.57

J.O. ANDERSON
No 5-20° A
10.46
24.00
N 86° W

No 6-82° A
CHARLES E. ANDERSON
29.76
N 74° 34' E 10.60
N 19° 34' E 20.33
E 60° 34' W 26.00

No 7-16349 A
GEORGE LINSCOTT
40.32

No 8-187° A
T.M. FLEMMING
48.02
N 74° 34' E 15.69
No 10-16° A
WM. GARDNER
5.75

No 9-16° A
P.H. WALKER
11.42
40.22
4.52