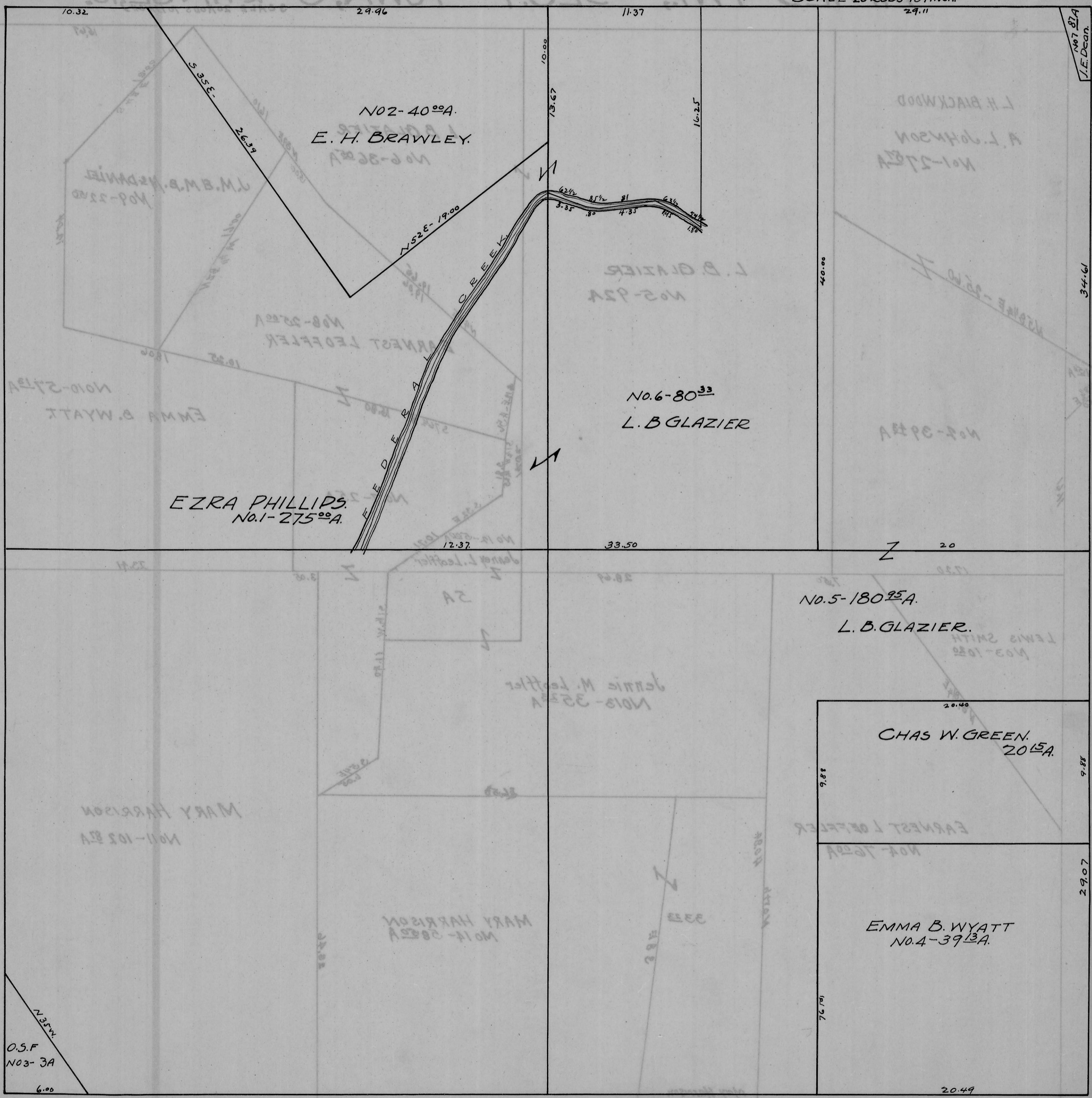


AMES TWP. - SEC. 8 - TOWN, 6 - RANGE, 13.

SCALE 20 RODS TO 1 INCH.



No. 7 81A
J.E. Deon.

344.61

Z 20

No. 5-180°5A.
L.B. GLAZIER.

CHAS. W. GREEN.
2015A.

EMMA B. WYATT
No. 4-39°13A.

N 35° W
O.S.F.
No. 3-3A
6.00

20.49