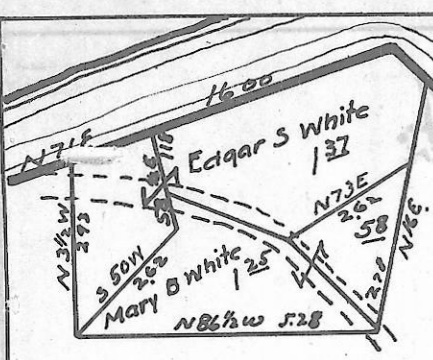


ATHENS TWP., SEC. 15 — TOWN, 9 — RANGE, 14.

Scale 20 Rods To 1 INCH.



NO. 2-53³²A.
ATHENS STATE HOSPITAL

NO. 3-153⁰⁸A.
LOT NO. 97
ATHENS STATE HOSPITAL.

A S Y L U M
LOT NO. 61
105⁰⁰A.

"See Sec. 9."

LOT NO. 60

NO. 1-50²⁵
Athens State Hospital.

NO. 2-42⁶¹A
ATHENS STATE HOSPITAL.

NO. 3-24³⁰
Athens state Hospital

LOT NO. 59

Rose Coats
No 4-11⁷⁵

NO. 5-32⁵⁰

C.A. CORNWELL.

"See Sec 8"

